

CHUCKS CLAMPS

4



12HH CHUCK 4.1

12HH ROD CLAMP 4.2

BOYLES P CHUCK 4.3

BOYLES P ROD CLAMP 4.4

XH CHUCK 4.5

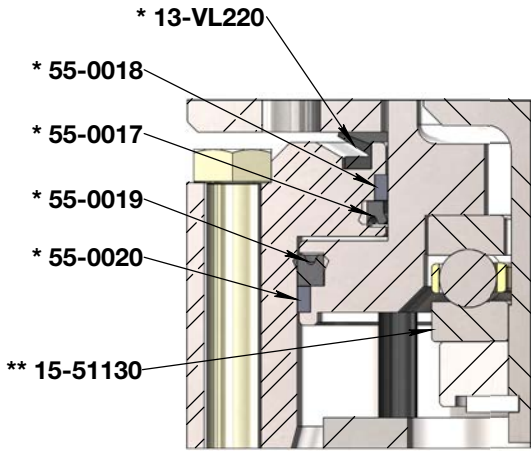
CHRISTENSEN P CHUCK 4.6

XP CLAMP 4.7

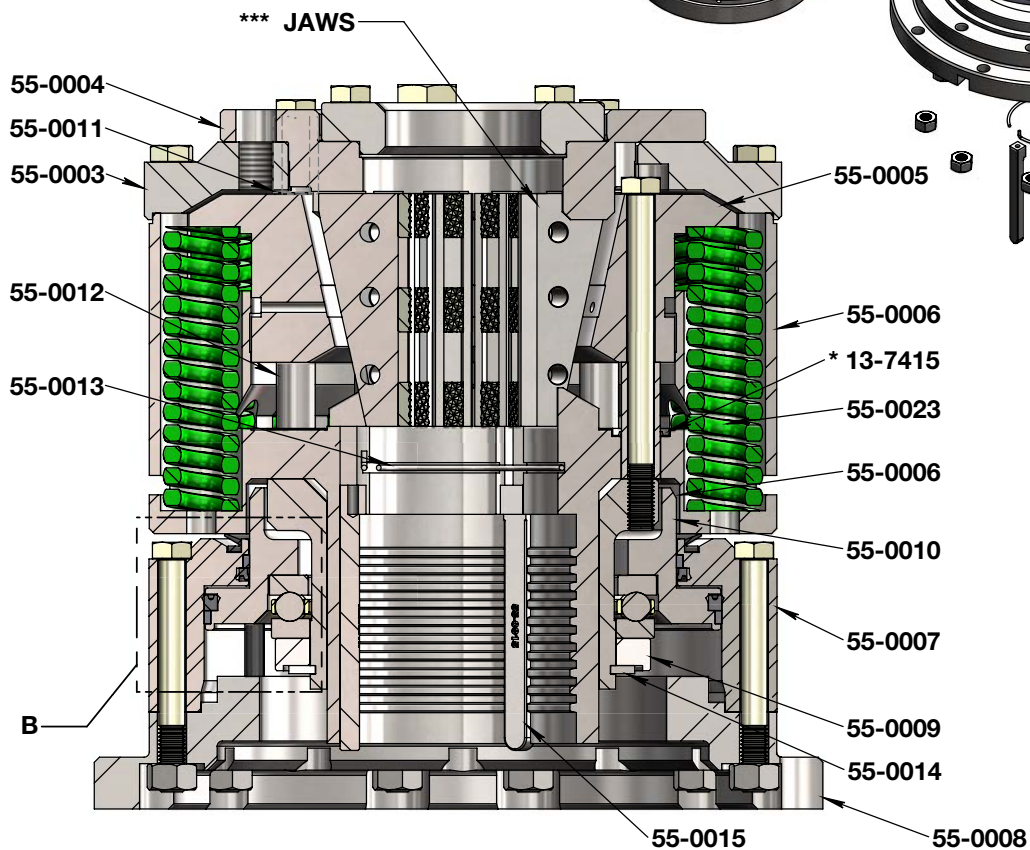
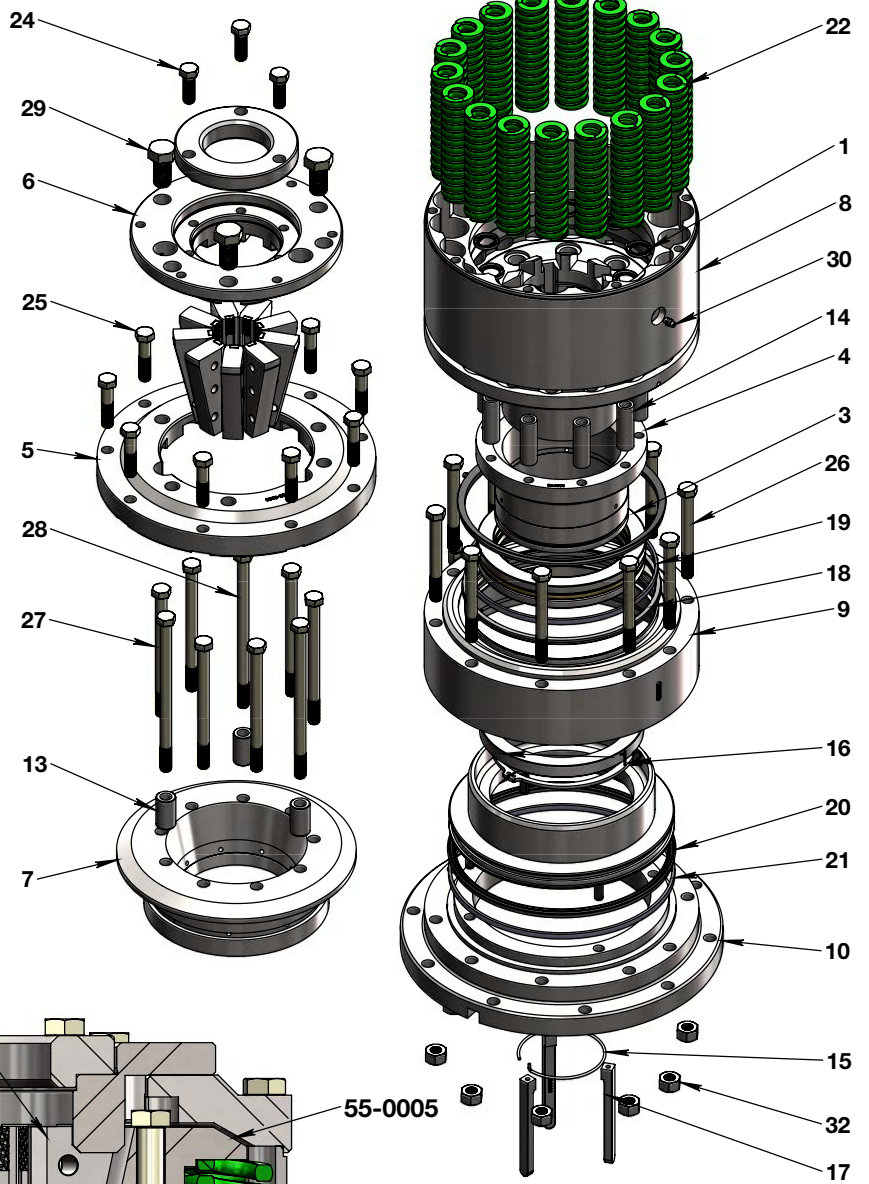
WR-2000 ROD CLAMP 4.8



4 CHUCK & ROD CLAMP



DETAIL B
SCALE 2 : 3.5



12HH Chuck

Assembly Kit Order

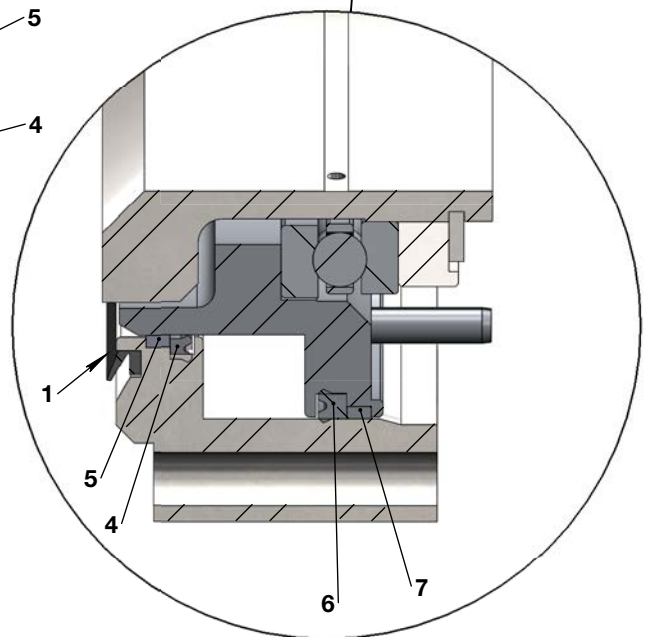
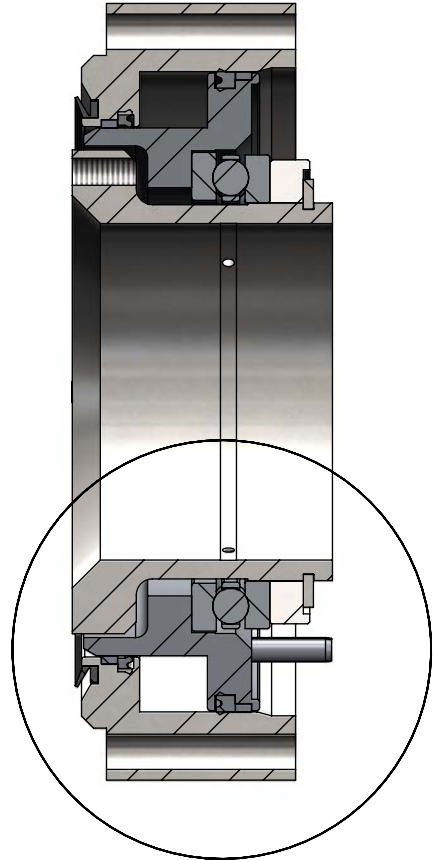
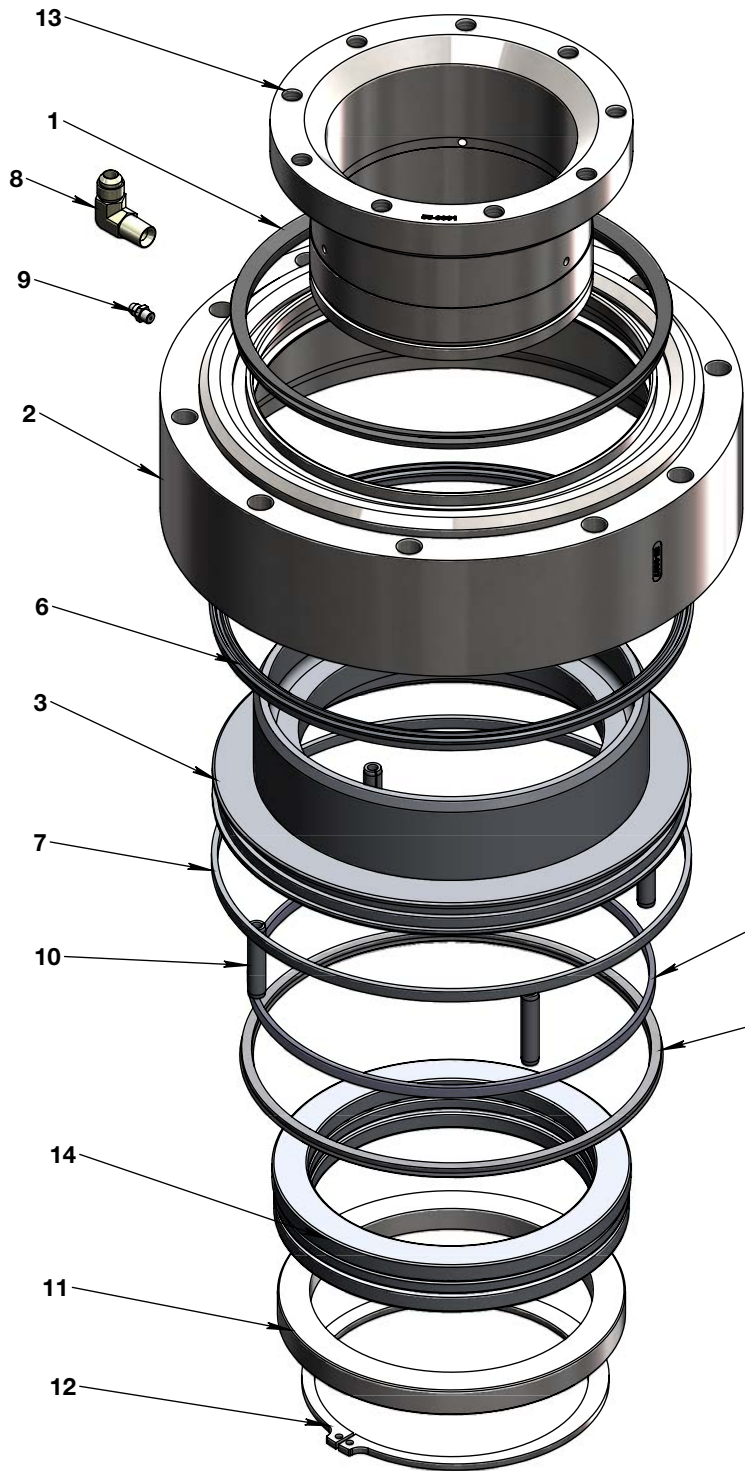
Item #	Part #	Description	Weight (lbs)	Copco P/N	Mirow P/N
1-32	55-1000	12HH Chuck Assembly	276	2920224	18120001

Parts List

Item #	Part #	Description	Qty	Copco P/N	Mirow P/N
*1	13-7415	Oil Seal	9	5040192	18100156
*2	13-VL220	V-Ring	1	5041022	18100065
**3	15-51130	Thrust Bearing	1	5000199	18100157
4	55-0001	Actuator Sleeve	1	3506928	18100123
5	55-0003	Top Cap Holder (6 Holes)	1	3506906	18100122
6	55-0004	Top Cap Adapter	1	3506907	18100071
7	55-0005	Chuck Bowl, 12.5 Deg	1	2920390	18100067
8	55-0006	Chuck Housing	1	3506870	18100091
9	55-0007	Chuck Cylinder	1	3506909	18100024
10	55-0008	Chuck Adapter	1	3506910	18100147
11	55-0009	Back Up Ring	1	3506882	18100086
12	55-0010	Chuck Piston, c/w Spring Pins	1	3506908	18100023
13	55-0011	Top Spacer	3	3506878	18100058
14	55-0012	Bottom Spacer	9	3506880	18100059
15	55-0013	Key Locking Spring	1	3506879	18100158
16	55-0014	Retaining Ring	1	5054078	18100285
17	55-0015	Key,12HH Chuck	3	3506881	18100041
*18	55-0017	U Cup Seal, Ø8-1/4"	1	5035016	18100062
*19	55-0018	Wear Ring, Ø8-1/4"	1	5035018	18100063
*20	55-0019	U Cup Seal, Ø10"	1	5035015	18100061
*21	55-0020	Wear Ring, Ø10"	1	5035017	18100064
22	55-0023	Compression Spring	18	5200517	18100155
23	2501-0604	90° M-JIC #6 / M-NPT #4	1	5290662	
24	15209	1/2-13 x 1-1/2" Grade 8 Yellow Zinc Finish Hex Cap Screw	3	5115003	HHCS120131125
25	15212	1/2-13 x 2-1/4" Grade 8 Yellow Zinc Finish Hex Cap Screw	9	5115303	HHCS120132145
26	15221	1/2-13 x 4-1/2" Grade 8 Yellow Zinc Finish Hex Cap Screw	10	5125103	HHCS120134125
27	15226	1/2-13 x 6-1/2" Grade 8 Yellow Zinc Finish Hex Cap Screw	6	5125503	HHCS120136125
28	15229	1/2-13 x 8" Grade 8 Yellow Zinc Finish Hex Cap Screw	3	5125803	HHCS120138005
29	15359	3/4-10 x 1-1/2" Grade 8 Yellow Zinc Finish Hex Cap Screw	3	5119006	HHCS340101125
30	58834	1/4-28 Straight Steel Zinc Self-Tapping Grease fitting	3	5200812	GF14028S
31	64313	3/8" x 1-3/4" Plain Finish Steel Slotted Spring Pin	4		
32	124755	1/2-13 Yellow Zinc Plated A194 2-H Heavy Hex Nut	10	5173024	NUTHH12013

- * Seal Kit #55-0022 includes items marked *
- ** Pack with grease before installing in chuck assembly
- *** Jaw set includes 9 matched jaws serviced only in sets of 9

4 CHUCK & ROD CLAMP





12HH Chuck Cylinder/Piston Assembly

Assembly Kit Order

Item #	Part #	Description	Weight
1-14	55-0200	Chuck Piston/Cylinder Assy (c/w Bearing, Actuator Sleeve and Backup Ring)	65
1-10	55-0205	Chuck Piston/Cylinder Assy (Piston and Cylinder with seals only)	47

Parts List

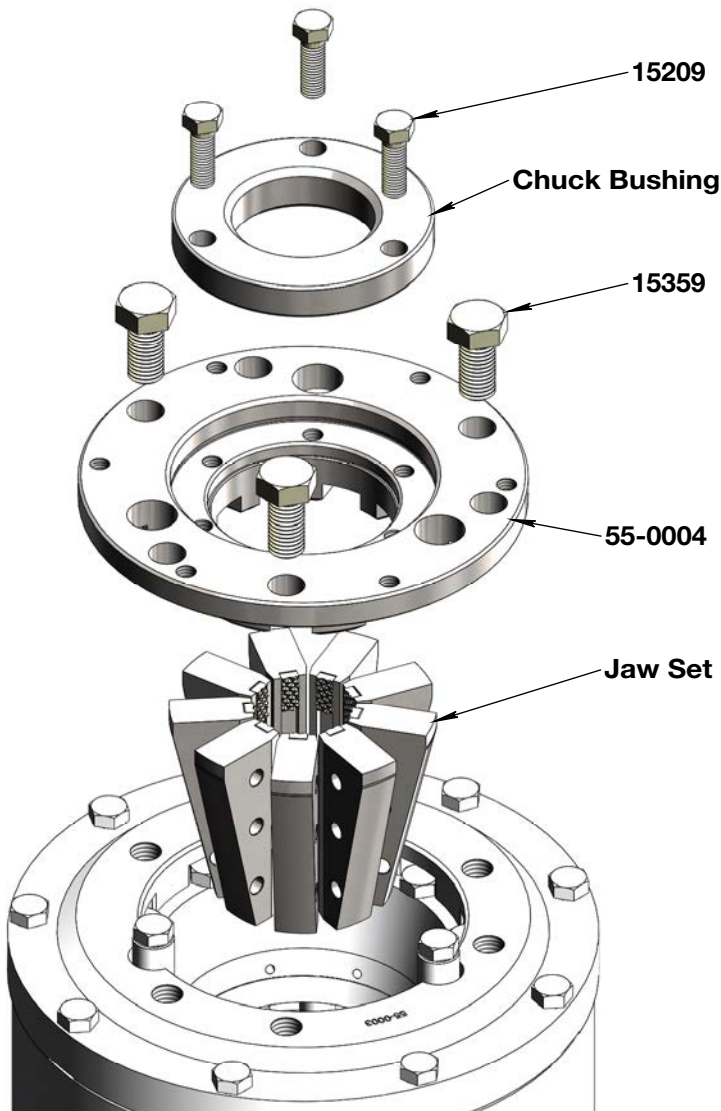
Item #	Part #	Description	Qty	Weight
1	13-VL220	V-Ring	1	0,056
2	55-0007	Chuck Cylinder	1	34,467
3	55-0010	Chuck Piston, c/w Spring Pins	1	12,277
4	55-0017	U Cup Seal, Ø8-1/4"	1	0,043
5	55-0018	Wear Ring, Ø8-1/4"	1	0,034
6	55-0019	U Cup Seal, Ø10"	1	0,084
7	55-0020	Wear Ring, Ø10"	1	0
8	2501-0604	90° M-JIC #6 / M-NPT #4	1	0,1
9	58834	1/4-28 Straight Steel Zinc Self-Tapping Grease fitting	1	0,01
10	64313	3/8" x 1-3/4" Plain Finish Steel Slotted Spring Pin	4	0,0346
11	55-0009	Back Up Ring	1	2,157
12	55-0014	Retaining Ring	1	0,302
13	55-0001	Actuator Sleeve	1	10,266
14	15-51130	Thrust Bearing	1	5,229

4 CHUCK & ROD CLAMP

Options & Accessories

Jaws & Chuck Bushings

SIZE	Jaw Set			Chuck Bushing		
	X-Spec P/N	Copco P/N	Mirow P/N	X-Spec P/N	Copco P/N	Mirow P/N
JKT/AW/AQ ROD EW CSG	30-16-00	2920391	N/A	55-0046	2920401	N/A
BW/BWL/BQ ROD AW CSG	30-16-01	2920392	18100012	55-0047	2920402 3506864	18100068
NWL/NQ ROD	30-16-02	2920394	18100135	55-0048	2920404 3506867	18100153
BW CSG	30-16-06	2920395	18100134	55-0049	2920405 3506868	18100206
HW/HWL/HQ ROD NW CSG	30-16-03	2920396	18100145	N/A	N/A	N/A



To Change Bushing:

- Remove the 3x 1/2-13 x 1-1/2" Grade 8 Yellow Zinc Finish Hex Cap Screw (15209)
- Remove bushing

To Change Jaw Set:

- Remove the 3x 3/4-10 x 1-1/2" Grade 8 Yellow Zinc Finish Hex Cap Screw (15359)
- Remove Top Cap Adapter
- Remove jaws set

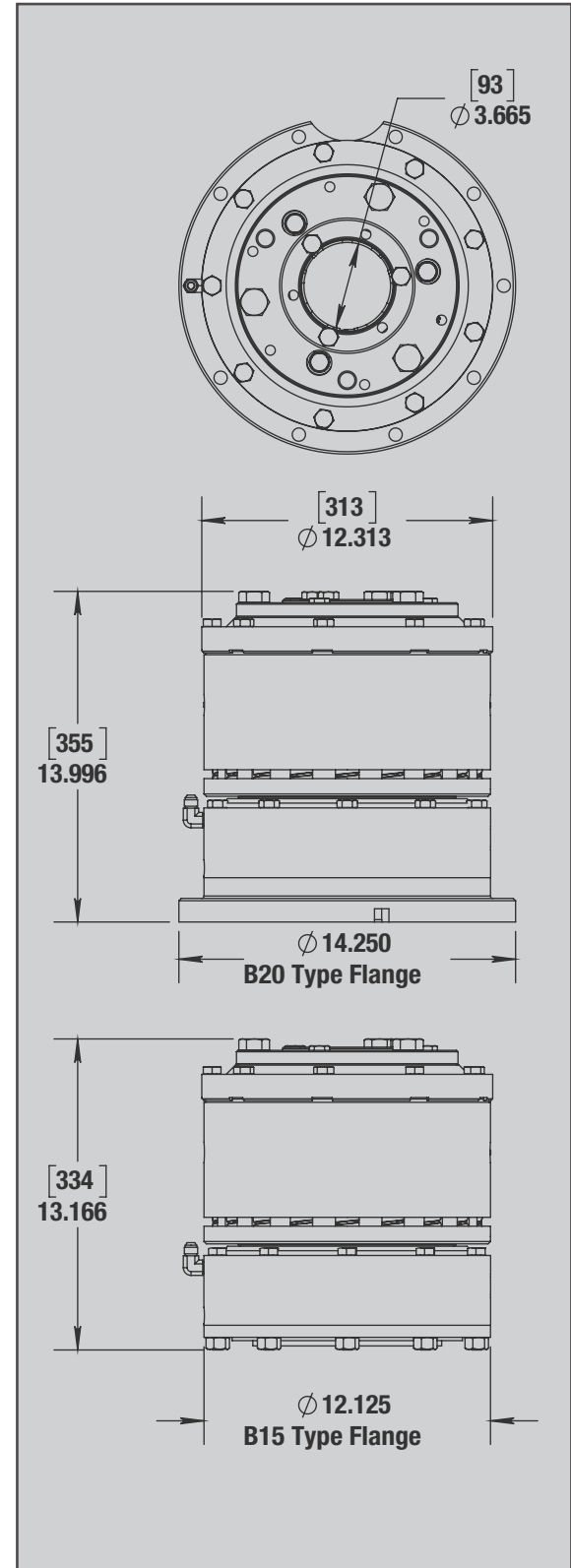
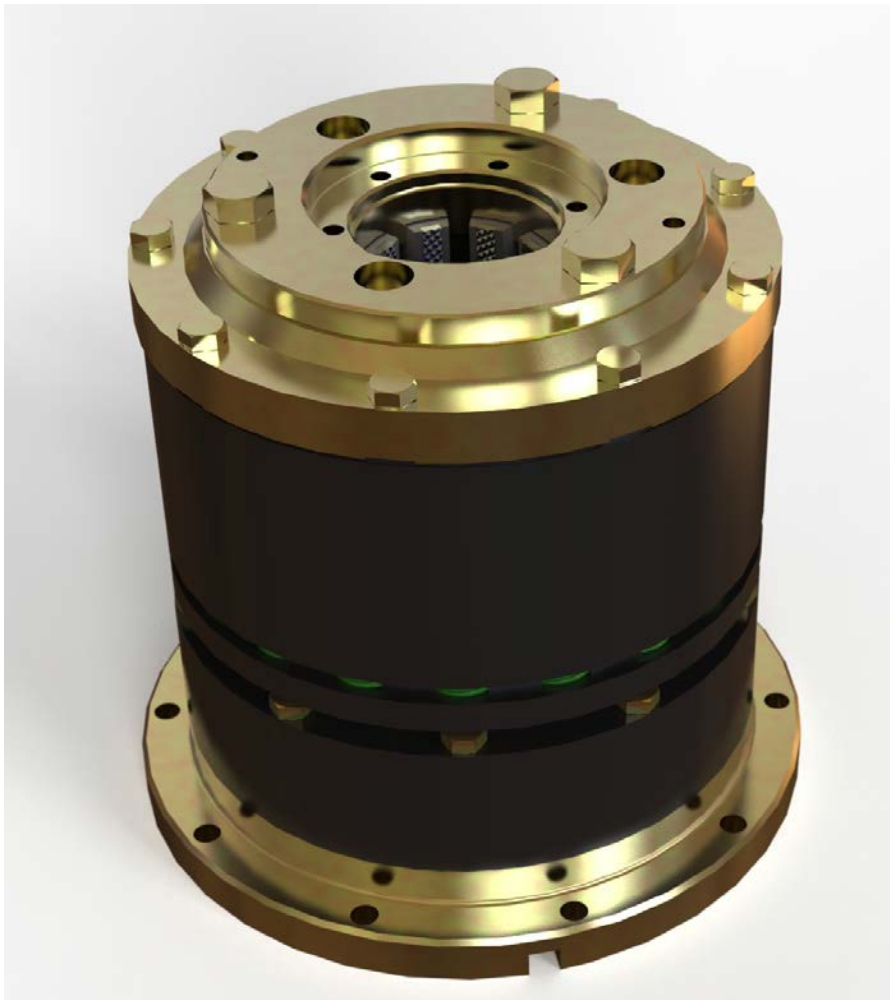
Specifications

Description

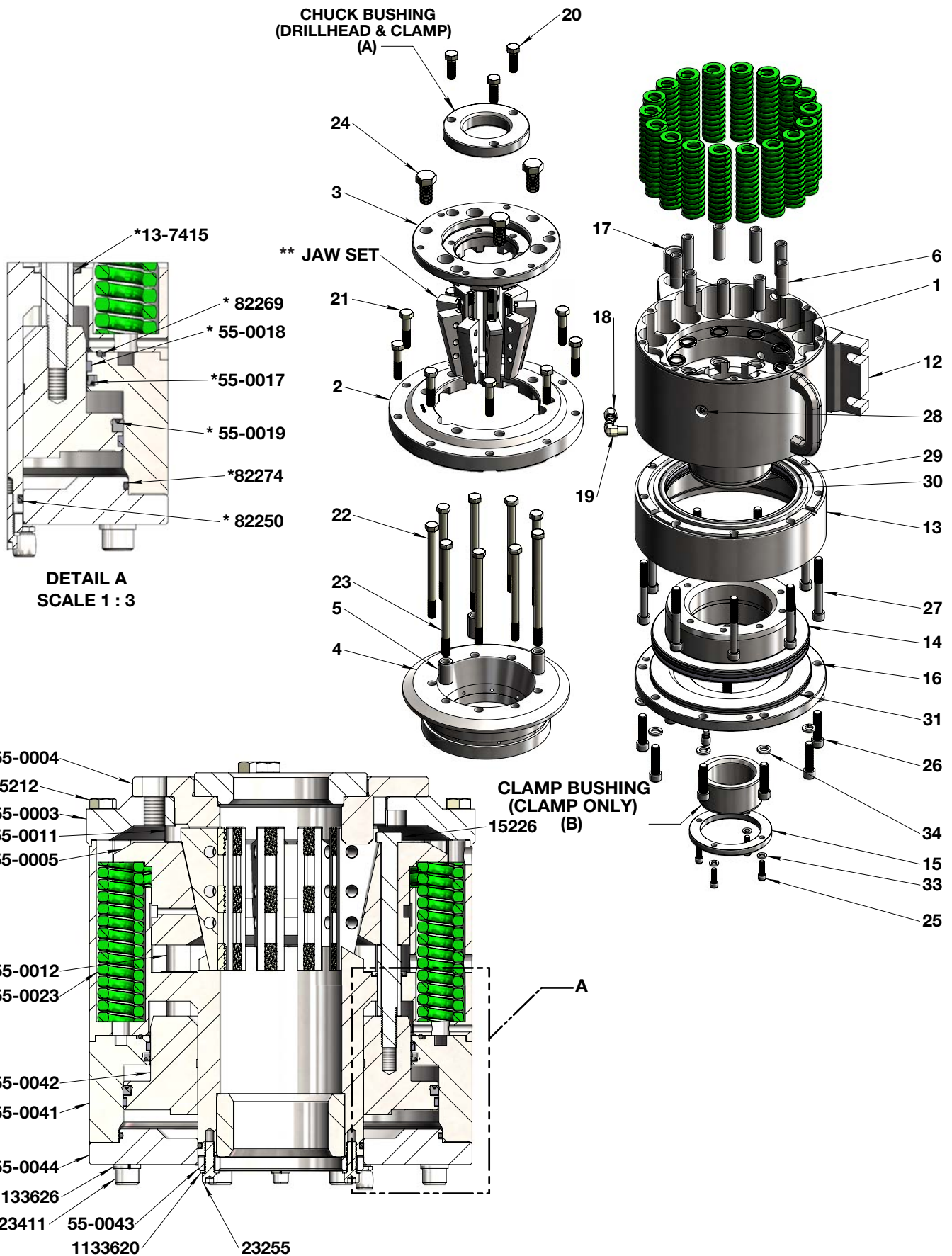
- Spring applied, hydraulic release
- H W/L rod capacity , 3-11/16" inside diameter (93mm)
- Each set uses 9 jaws with 3 carbides each

Specifications

Maximum Inside Diameter	3.665" (93 Mm)
Holding Capacity	26,000 Lbs (11,800 Kg)
Weight (B20 Adapter Flange)	275 Lbs (125 Kg)
Weight (B15 Adapter Flange)	255 Lbs (115 Kg)



4 CHUCK & ROD CLAMP



12HH Rod Clamp

Assembly Kit Order

Item #	Part #	Description	Weight (lbs)	Copco P/N	Mirow P/N
1-34	55-1500	12HH Rod Clamp Assembly	285	2920224	18120001

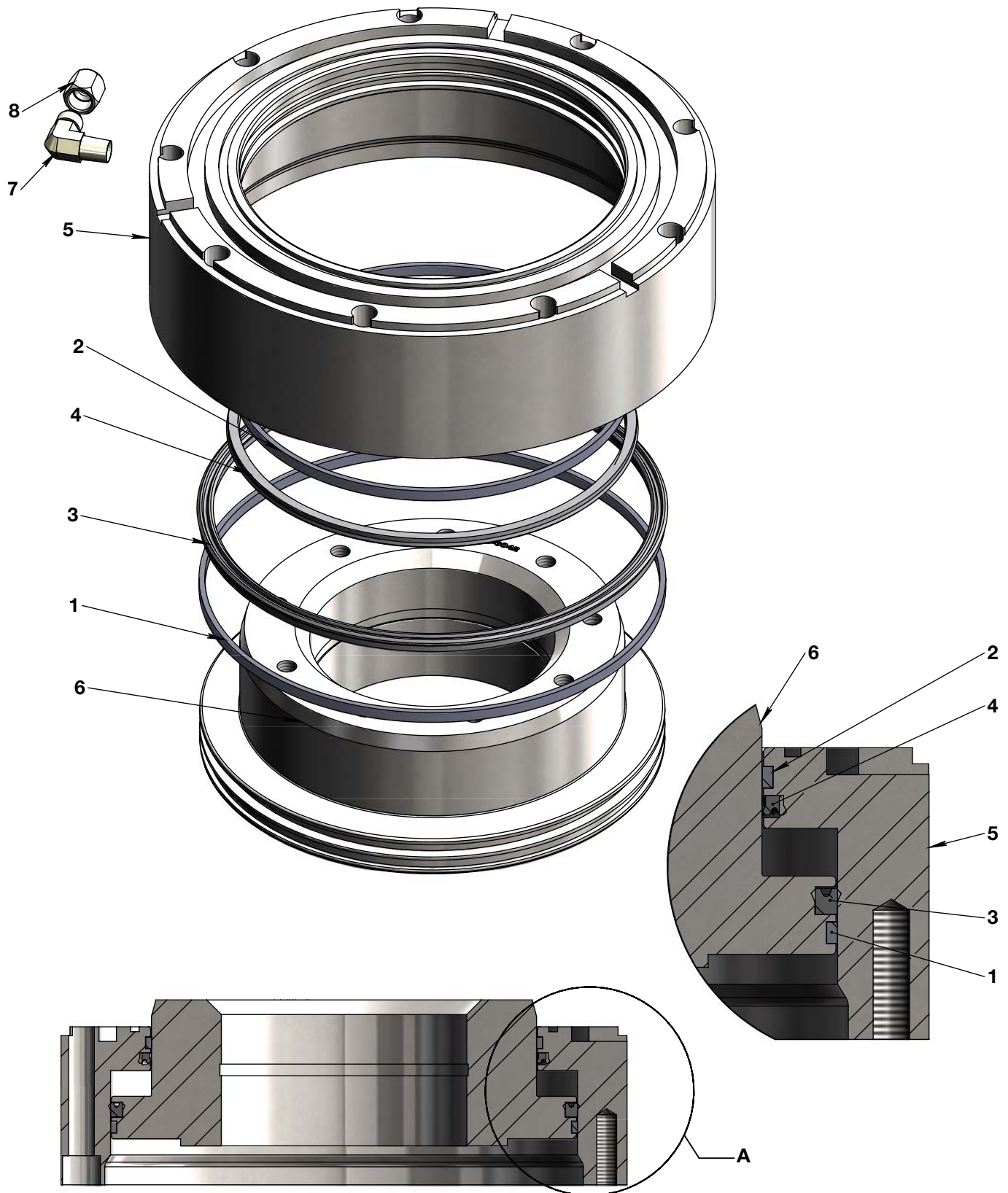
Parts List

Item #	Part #	Description	Qty	Copco P/N	Mirow P/N
*1	13-7415	Oil Seal	9	5040192	18100156
2	55-0003	Top Cap Holder (6 Holes)	1	3506906	18100122
3	55-0004	Top Cap Adapter	1	3506907	18100071
4	55-0005	Chuck Bowl, 12.5 Deg	1	2920390	18100067
5	55-0011	Top Spacer	3	3506878	18100058
6	55-0012	Bottom Spacer	9	3506880	18100059
*7	55-0017	U Cup Seal, Ø8-1/4"	1	5035016	18100062
*8	55-0018	Wear Ring, Ø8-1/4"	1	5035018	18100063
*9	55-0019	U Cup Seal, Ø10"	1	5035015	18100061
*10	55-0020	Wear Ring, Ø10"	1	5035017	18100064
11	55-0023	Compression Spring	18	5200517	18100155
12	55-0040	Clamp Housing	1	2920455	18100070
13	55-0041	Clamp Cylinder	1	2920332	18100052
14	55-0042	Clamp Piston	1	2920331	18100051
15	55-0043	Bushing Retainer	1	2920452	18100069
16	55-0044	Cylinder Cap	1	2920333	18100066
17	55-0045	Housing Bushing	2	5020126	18100336
18	0304C-06	Female JIC Flare Cap, #6	1		
19	2501-0604	90° M-JIC #6 / M-NPT #4	1	5290662	
20	15209	1/2-13 x 1-1/2" Grade 8 Yellow Zinc Finish Hex Cap Screw	3	5115003	HHCS120131125
21	15212	1/2-13 x 2-1/4" Grade 8 Yellow Zinc Finish Hex Cap Screw	9	5115303	HHCS120132145
22	15226	1/2-13 x 6-1/2" Grade 8 Yellow Zinc Finish Hex Cap Screw	6	5125503	HHCS120136125
23	15229	1/2-13 x 8" Grade 8 Yellow Zinc Finish Hex Cap Screw	3	5125803	HHCS120138005
24	15359	3/4-10 x 1-1/2" Grade 8 Yellow Zinc Finish Hex Cap Screw	3	5119006	HHCS340101125
25	23255	5/16-18 x 1" ASTM A574 Hex Drive Steel Socket Cap Screw	4	5102616	SHCS51618100
26	23411	1/2-13 x 2" ASTM A574 Hex Drive Steel Socket Cap Screw	9	5115216	SHCS12013200
27	23419	1/2-13 x 4" ASTM A574 Hex Drive Steel Socket Cap Screw	9	5125016	SHCS12013400
28	58834	1/4-28 Straight Steel Zinc Self-Tapping Grease fitting	1	5200812	GF14028S
*29	82250	O-Ring	1	5030250	18100189
*30	82269	O-Ring	1	5030269	18100191
*31	82274	O-Ring	1	5030274	18100192
32	300805	Air Breather, 1/8 NPT	1	7500346	18100173
33	1133620	5/16 Zinc Finish Medium Split Lock Washer	4	5180405	
34	1133626	1/2 Zinc Finish Medium Split Lock Washer	9		WASHERLKHC12B

* Seal Kit #55-0058 includes items marked *

** Jaw set includes 9 matched jaws serviced only in sets of 9

4 CHUCK & ROD CLAMP





12HH Clamp Cylinder/Piston Assembly

Assembly Kit Order

Item #	Part #	Description	Weight (lbs)
1-8	55-0300	Clamp Piston/Cylinder Assy	68.2

Parts List

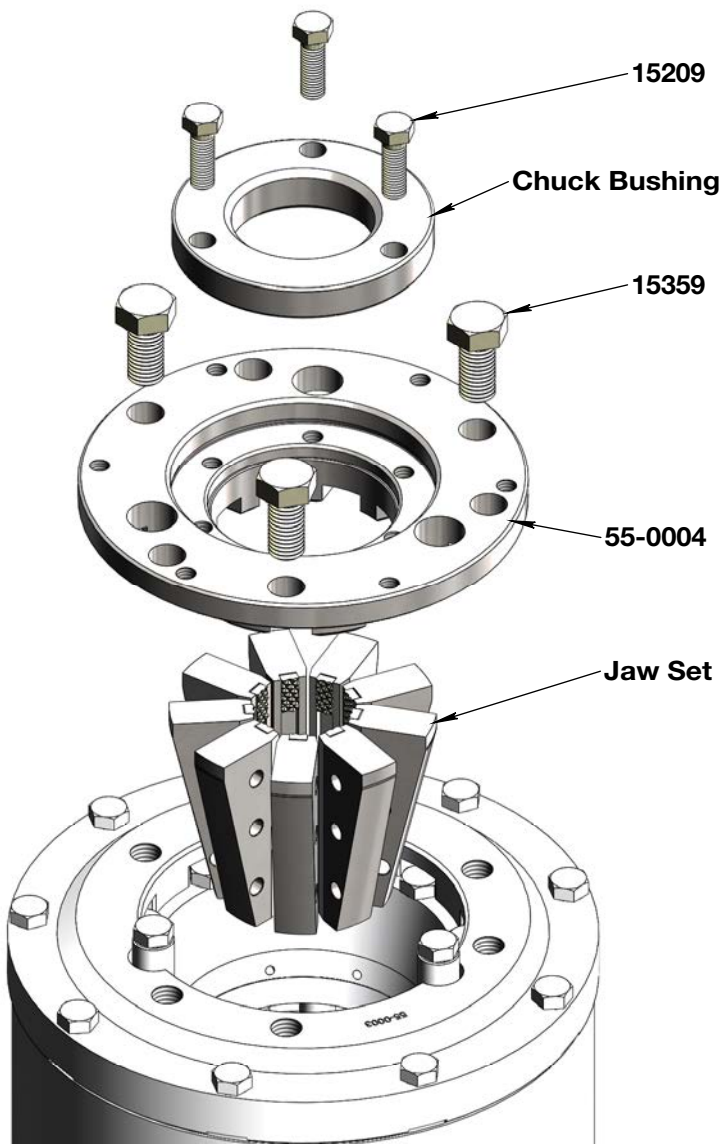
Item #	Part #	Description	Qty	Weight (lbs)
1	55-0020	Wear Ring, Ø10"	1	0,04
2	55-0018	Wear Ring, Ø8-1/4"	1	0
3	55-0019	U Cup Seal, Ø10"	1	0,084
4	55-0017	U Cup Seal, Ø8-1/4"	1	0,043
5	55-0041	Clamp Cylinder	1	36,013
6	55-0042	Clamp Piston	1	31,857
7	2501-0604	90° M-JIC #6 / M-NPT #4	1	0,1
8	0304C-06	Female JIC Flare Cap, #6	1	0,059

4 CHUCK & ROD CLAMP

Options & Accessories

Jaws & Chuck/Clamp Bushings

SIZE	Jaw Set			Chuck Bushing			Clamp Bushing		
	X-Spec P/N	Copco P/N	Mirow P/N	X-Spec P/N	Copco P/N	Mirow P/N	X-Spec P/N	Copco P/N	Mirow P/N
JKT/AW/AQ ROD EW CSG	30-16-00	2920391	N/A	55-0046	2920401	N/A	55-0050	2920459	
BW/BWL/BQ ROD AW CSG	30-16-01	2920392	18100012	55-0047	2920402 3506864	18100068	55-0051	2920460	18100203
NWL/NQ ROD	30-16-02	2920394	18100135	55-0048	2920404 3506867	18100153	55-0052	2920454	18100205
BW CSG	30-16-06	2920395	18100134	55-0049	2920405 3506868	18100206	55-0053	2920462	18100204
HW/HWL/HQ ROD NW CSG	30-16-03	2920396	18100145	55-0059	N/A	N/A	55-0054	2920453	18100383

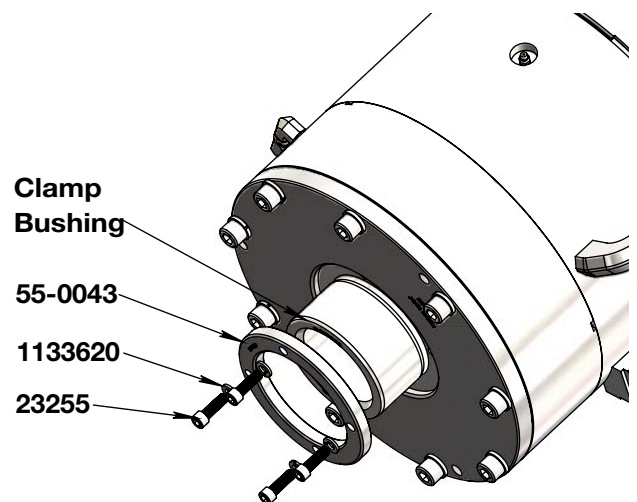


To Change Clamp Bushing:

- Remove the 4x 5/16-18 x 1" ASTM A574 Hex Drive Steel Socket Cap Screw (23255)
- Remove bushing

To Change Jaw Set:

- Remove the 3x 3/4-10 x 1-1/2" Grade 8 Yellow Zinc Finish Hex Cap Screw (15359)
- Remove Top Cap Adapter (55-0004)
- Remove jaws set



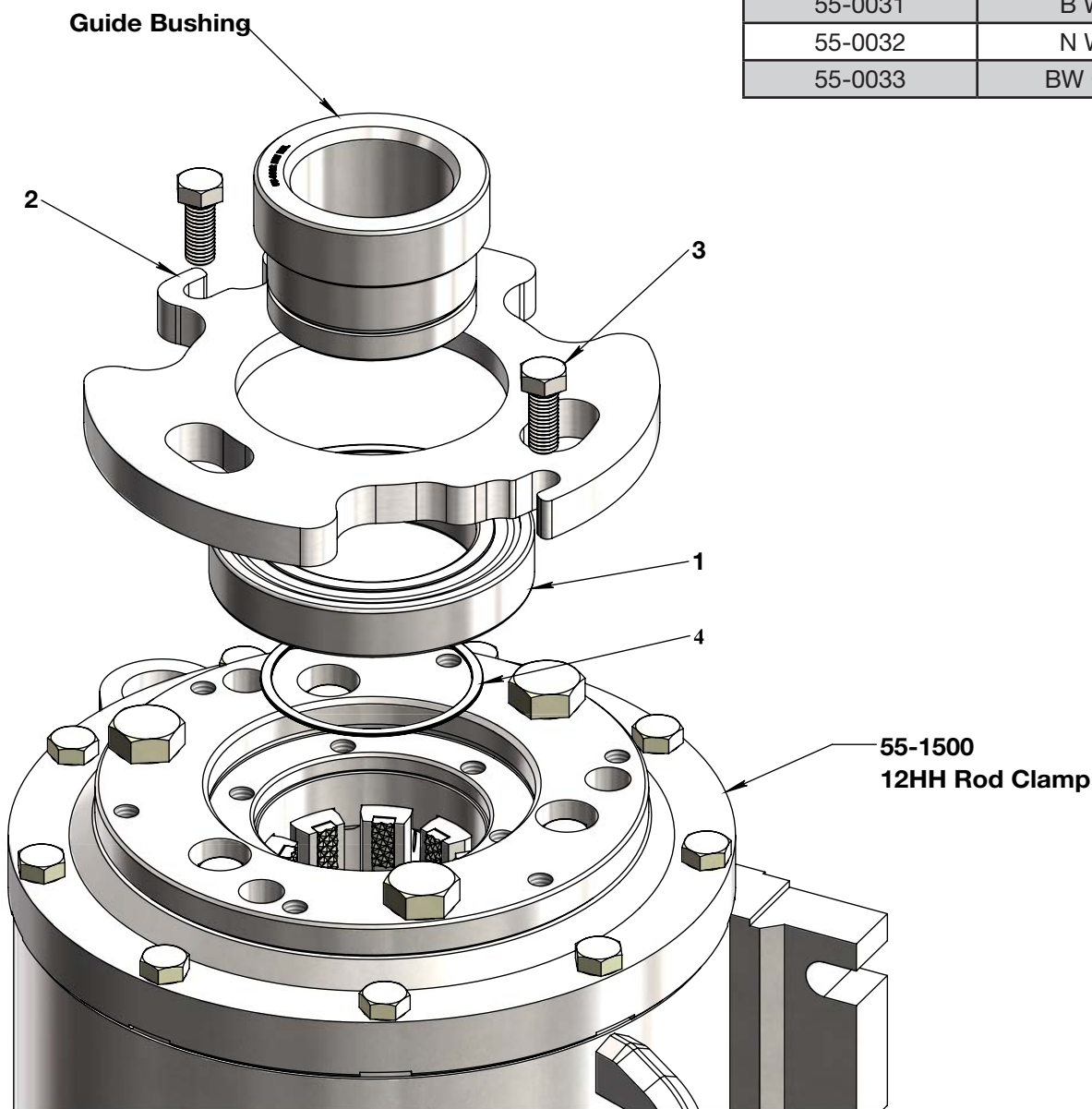


Options & Accessories

Bearing guide bushing assembly

Item #	Part #	Description	Qty	Weight (lbs)
1	15-6018-2RS	Ball Bearing	1	2,474
2	55-0029	Wear Bushing Support Plate	1	7,731
3	15207	1/2-13 x 1-1/4" Grade 8 Yellow Zinc Finish Hex Cap Screw	2	0,1037
4	04WS-350	Spiral Ring	1	0,034
5	See Table	Guide Bushing	1	3,665

Guide Bushing	
Part #	Size
55-0030	A W/L
55-0031	B W/L
55-0032	N W/L
55-0033	BW CSG



4 CHUCK & ROD CLAMP

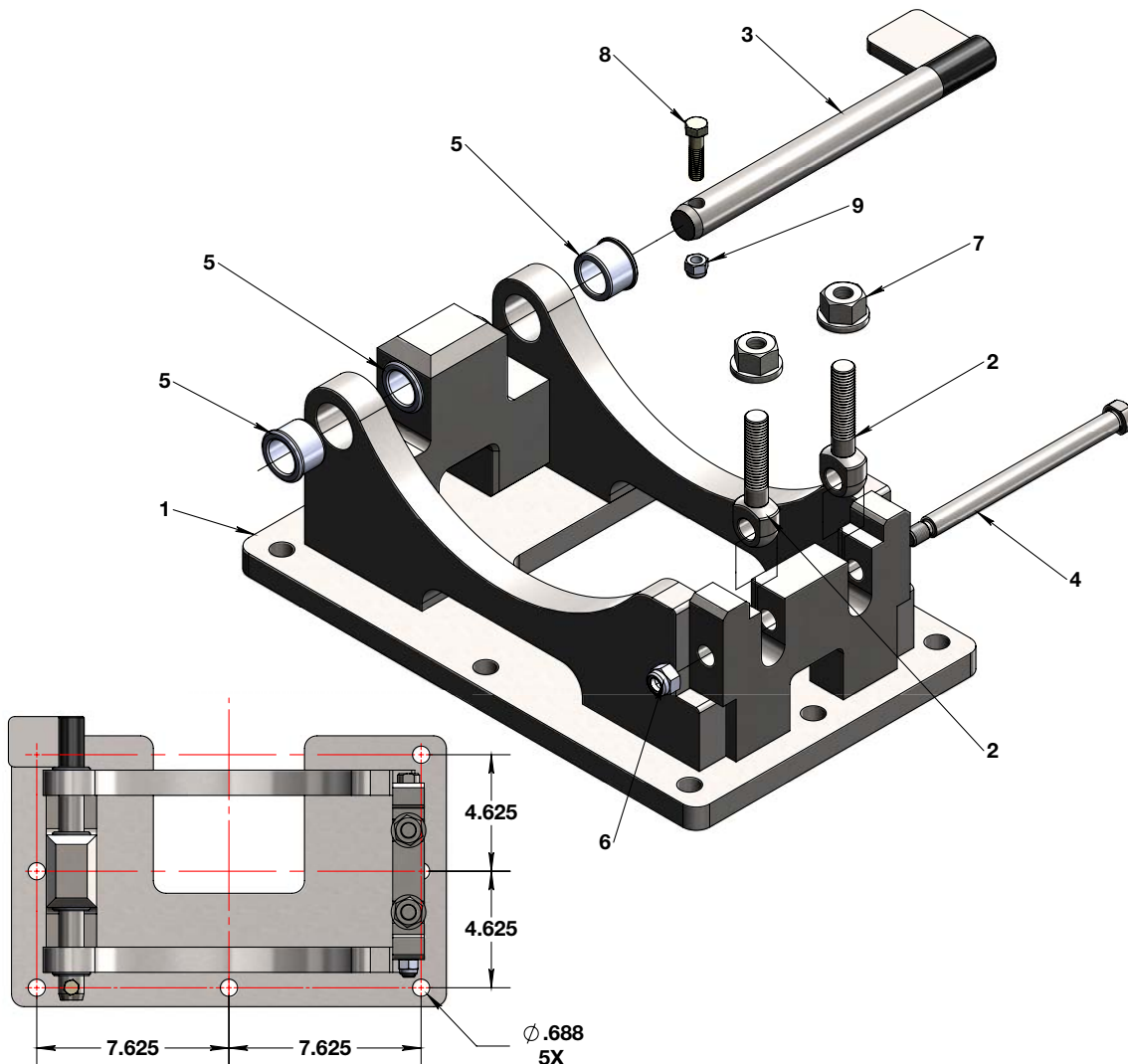
Options & Accessories

Rod Clamp Base

Assembly Kit Order

Item #	Part #	Description	Weight (lbs)
1-8	55-4000	Rod Clamp Base Assy	79.2

Item #	Part #	Description	Qty	Weight (lbs)
1	55-4010	Rod Clamp Base Weldment	1	73,494
2	12-12-2750	Eye Bolt, 5/8-11 UNC X 2-3/4" Lg	2	0,421
3	55-0083	Rod Holder Pivot Pin	1	2,882
4	90-132	Eye Bolt Pivot Pin	1	0,656
5	25-886414	H/T Bushing, Ø1.375" OD X Ø1.000" ID X 0.875" Lg	4	0,201
6	37527	1/2-13 Grade 2 Zinc Finish NE Steel Nylon Insert Lock Nut	1	0,05
7	400806	Flanged Nut, 5/8-11 UNC	2	0,2
8	15109	3/8-16 x 1-1/2" Grade 8 Yellow Zinc Finish Hex Cap Screw	1	0,0626
9	37024	3/8-16 Grade 2 Zinc Finish NE Steel Nylon Insert Lock Nut	1	0,022



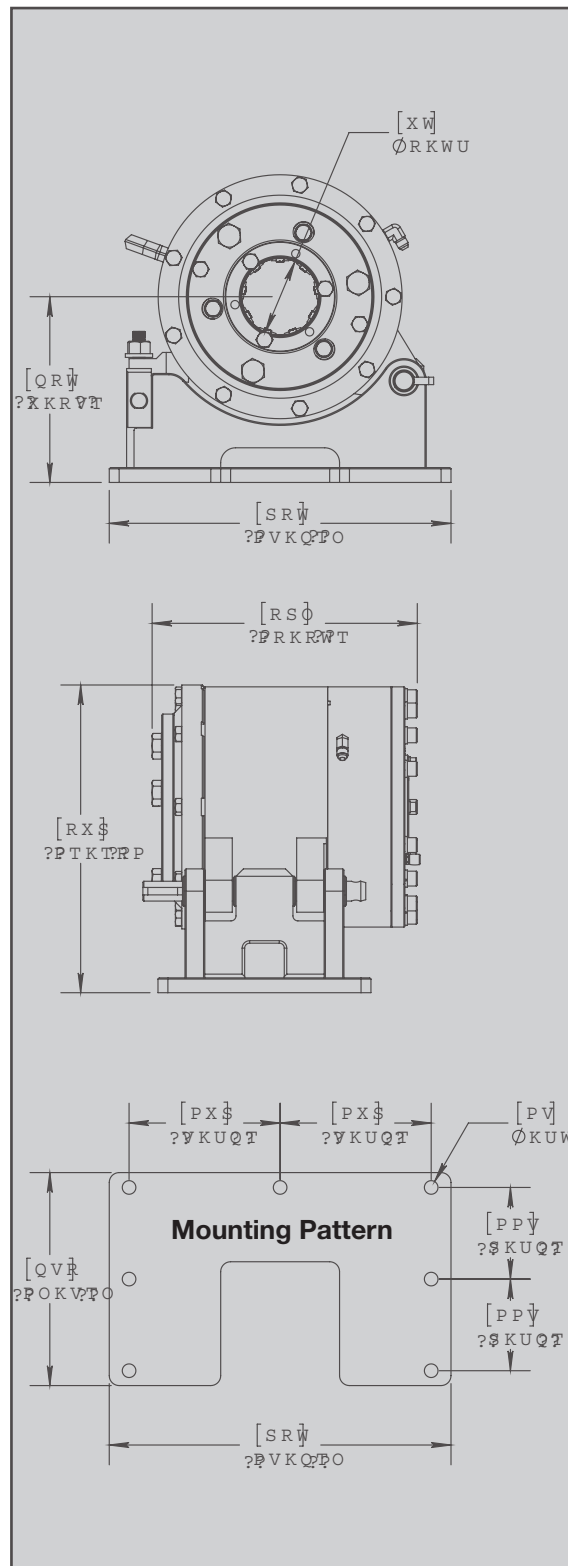
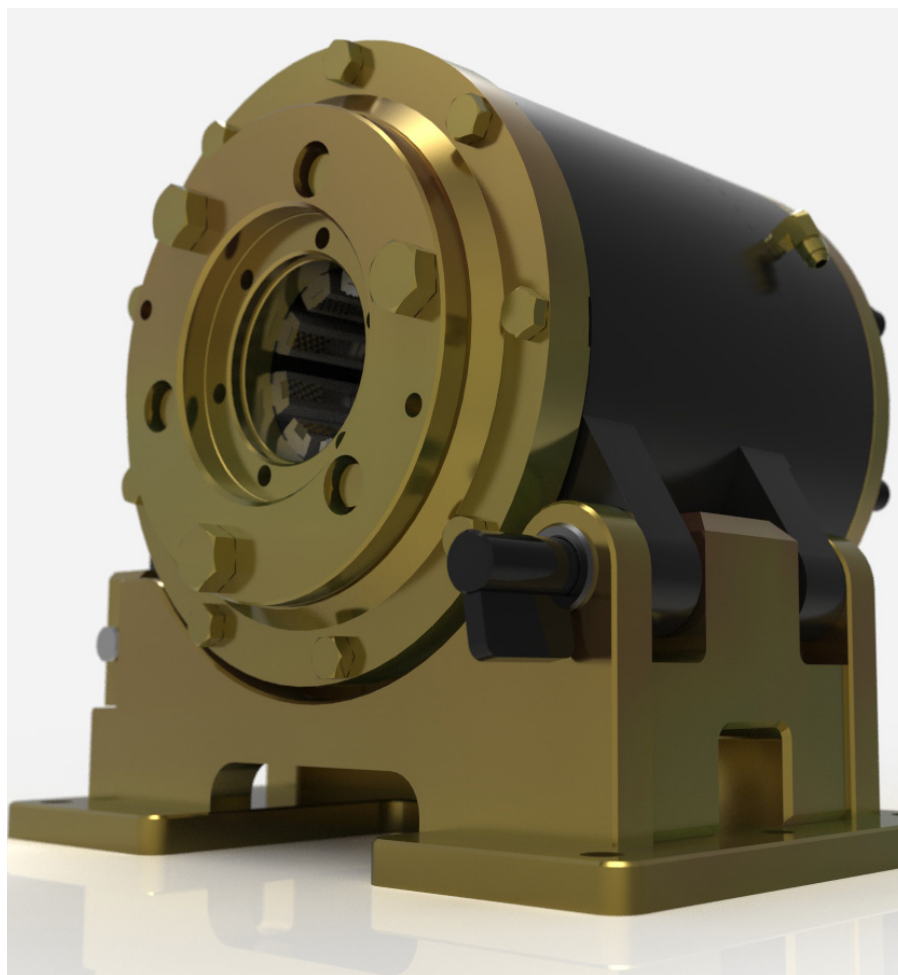
Specifications

Description

- Spring applied, hydraulic release
- H W/L rod capacity , 3-7/8" inside diameter (98mm)
- Each set uses 9 jaws with 3 carbides each

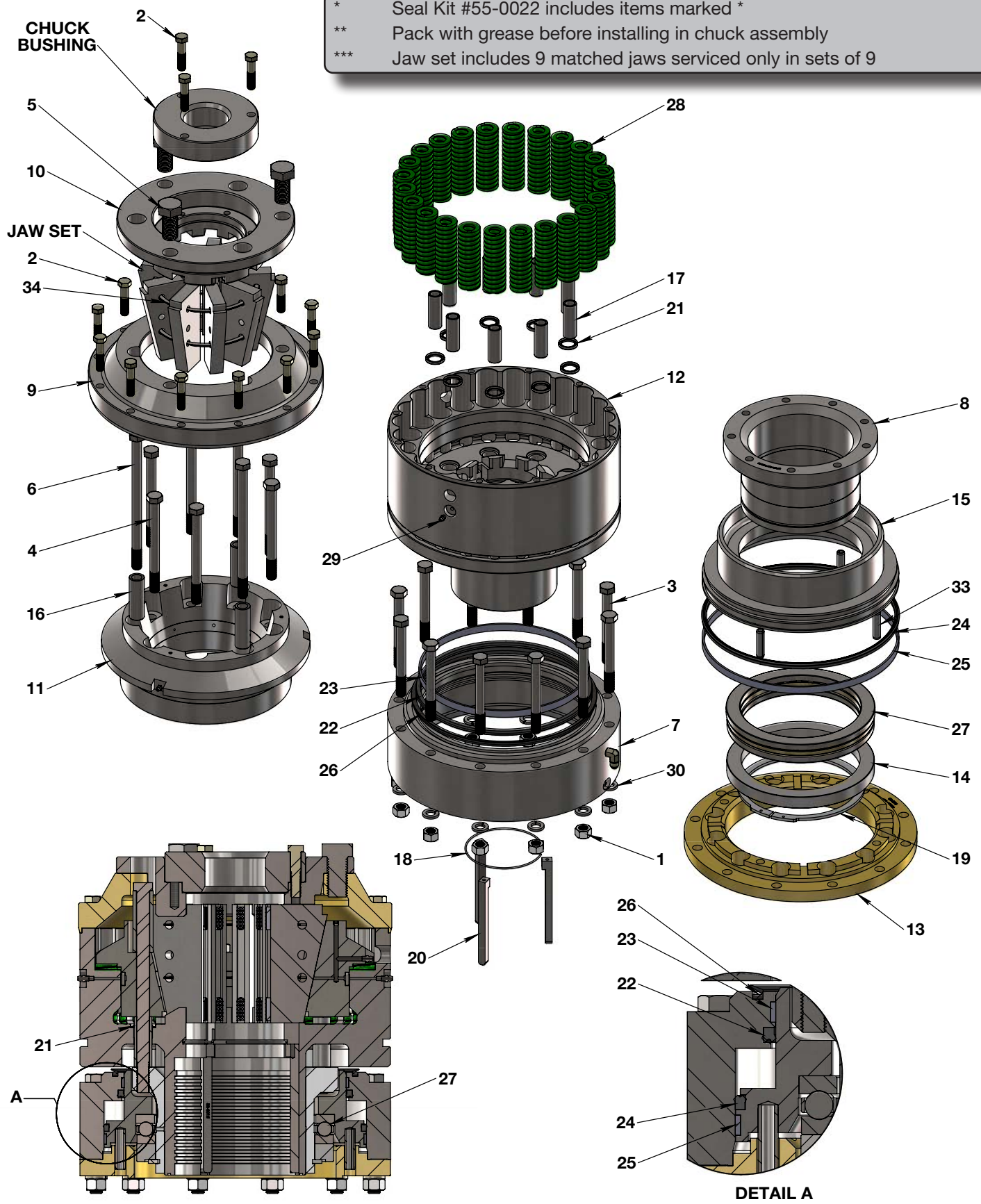
Specifications

Maximum Inside Diameter	3.860" (98 Mm)
Holding Capacity	26,000 Lbs (11,800 Kg)
Weight (Clamp Only)	275 Lbs (125 Kg)
Weight (With Base)	355 Lbs (160 Kg)



4 CHUCK & ROD CLAMP

* Seal Kit #55-0022 includes items marked *
 ** Pack with grease before installing in chuck assembly
 *** Jaw set includes 9 matched jaws serviced only in sets of 9



35PH Boyles P Chuck

Assembly Kit Order

Item #	Part #	Description	Weight (lbs)	Copco P/N	Mirow P/N
1-34	52-1000	35PH Chuck Assembly	527	3509501	18120017

Parts List

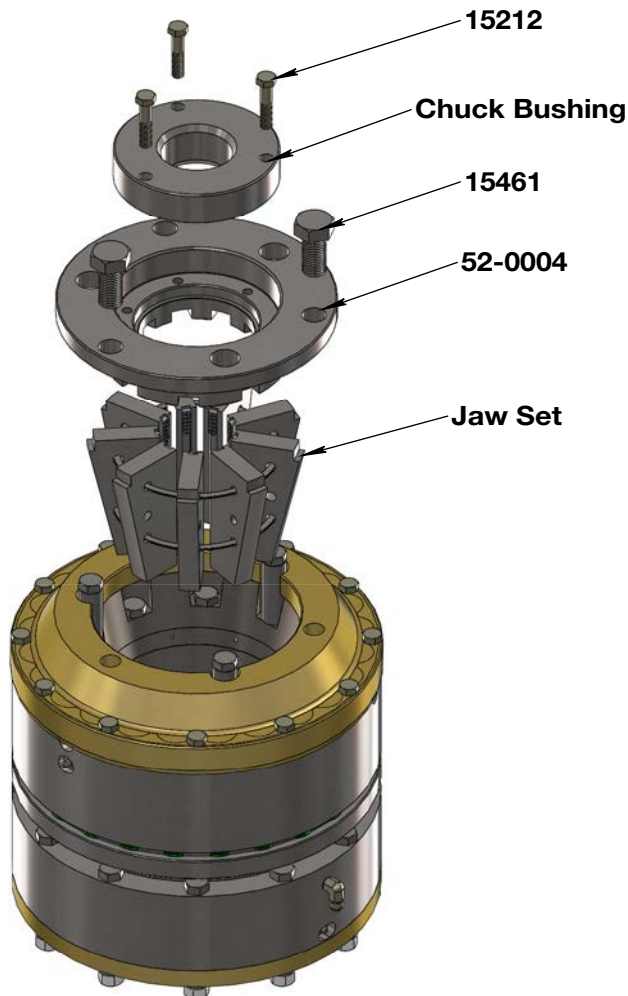
Item #	Part #	Description	Qty	Copco P/N	Mirow P/N
1	36314	5/8-11 Zinc Finish Grade 5 Finished Hex Nut	12	5181110	NUTHH58011
2	15212	1/2-13 x 2-1/4" Grade 8 Yellow Zinc Finish Hex Cap Screw	15	5115303	HHCS120132145
3	15324	5/8-11 x 5-1/2" Grade 8 Yellow Zinc Finish Hex Cap Screw	12	5127303	HHCS580115125
4	15327	5/8-11 x 7" Grade 8 Yellow Zinc Finish Hex Cap Screw	6	5127874	HHCS580117005
5	15461	1-8 x 2" Grade 8 Yellow Zinc Finish Hex Cap Screw	3	5141203	HHCS1082005
6	15333	5/8-11 x 10" Grade 8 Yellow Zinc Finish Hex Cap Screw	3	5160363	HHCS5801110005
7	52-0007	Cylinder, P Chuck	1	3509601	18100448
8	52-0001	Actuator Sleeve, P Chuck	1	3509603	18100443
9	52-0003	Top Cap Holder, P Chuck	1	3509606	18100435
10	52-0004	Top Cap Adapter, P Chuck	1	3509607	18100434
11	52-0005	Chuck Bowl, P Chuck	1	2509630	18100437
12	52-0006	Housing, P Chuck	1	3509604	18100438
13	52-0008	Adapter Flange, P Chuck	1	3509002	18100453
14	52-0009	Back Up Ring, P Chuck	1	3509610	18100452
15	52-0010	Piston, P Chuck	1	3509602	18100447
16	52-0011	Top Spacer	3	3509637	18100436
17	52-0012	Bottom Spacer, P Chuck	9	3509611	18100441
18	52-0013	Key Locking Spring	1	3509609	18100440
19	045100-0800	External Retaining Ring	1	5051800	18100454
20	52-0015	Key	3	3509608	18100442
21	13-8627	Oil Seal	9	5040267	18100439
22	52-0017	U-Cup Seal	1	5035026	18100446
23	52-0018	Wear Ring	1	5035024	18100445
24	52-0019	U-Cup Seal	1	5035027	18100450
25	52-0020	Wear Ring	1	5035025	18100451
26	13VL300	V-Ring	1	5041025	18100444
27	15-51140	Thrust Bearing	1	5000256	18100449
28	55-0023	Compression Spring	24	5200517	18100155
29	58834	1/4-28 Straight Steel Zinc Self-Tapping Grease fitting	6	5200812	GF14028S
30	1133630	5/8 Zinc Finish Medium Split Lock Washer	12	5181110	WASHERLK580
31	6408H-06	ORB #6 Male Hollow Hex Plug	1		
32	2501-0604	90° M-JIC #6 / M-NPT #4	1	5290662	
33	64355	1/2" x 2" Plain Finish Steel Slotted Spring Pin	4	5222832	
34	30-206	Jaw Retaining Ring, P Chuck	2		18100483

4 CHUCK & ROD CLAMP

Options & Accessories

Jaws & Chuck Bushings

SIZE	Jaw Set			Chuck Bushing	
	X-Spec P/N	Copco P/N	Mirow P/N	X-Spec P/N	Mirow P/N
JKT/AW/AQ ROD EW CSG	30-18-00	2920391	N/A	55-0046	N/A
BW/BWL/BQ ROD AW CSG	30-18-01	3509634	18100481	52-0030	18100482
NWL/NQ ROD	30-18-02	3509631	18100475	52-0031	18100478
HW/HWL/HQ ROD NW CSG	30-18-03	3509632	18100476	52-0032	18100479
PWL/PQ ROD / HW CSG	30-18-04	3509633	18100477	52-0033	18100480



To Change Bushing:

- Remove the 3x 1/2-13 x 1-1/2" Grade 8 Yellow Zinc Finish Hex Cap Screw (15209)
- Remove bushing

To Change Jaw Set:

- Remove the 3x 3/4-10 x 1-1/2" Grade 8 Yellow Zinc Finish Hex Cap Screw (15359)
- Remove Top Cap Adapter
- Remove jaws set



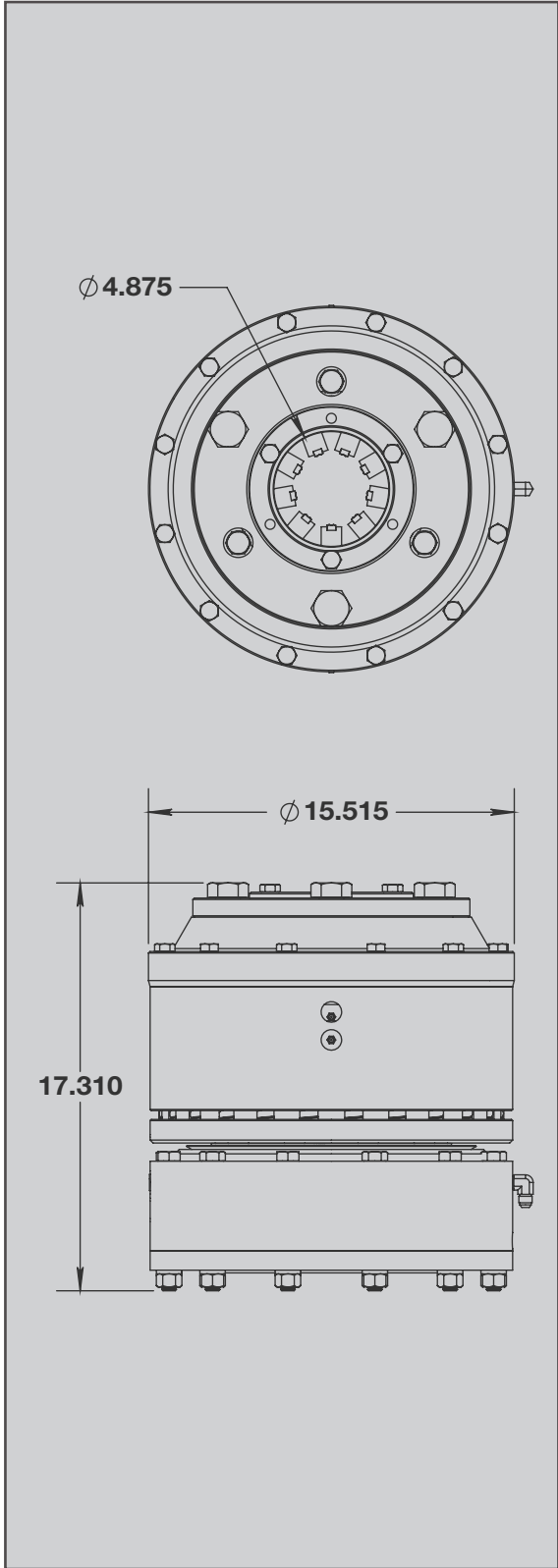
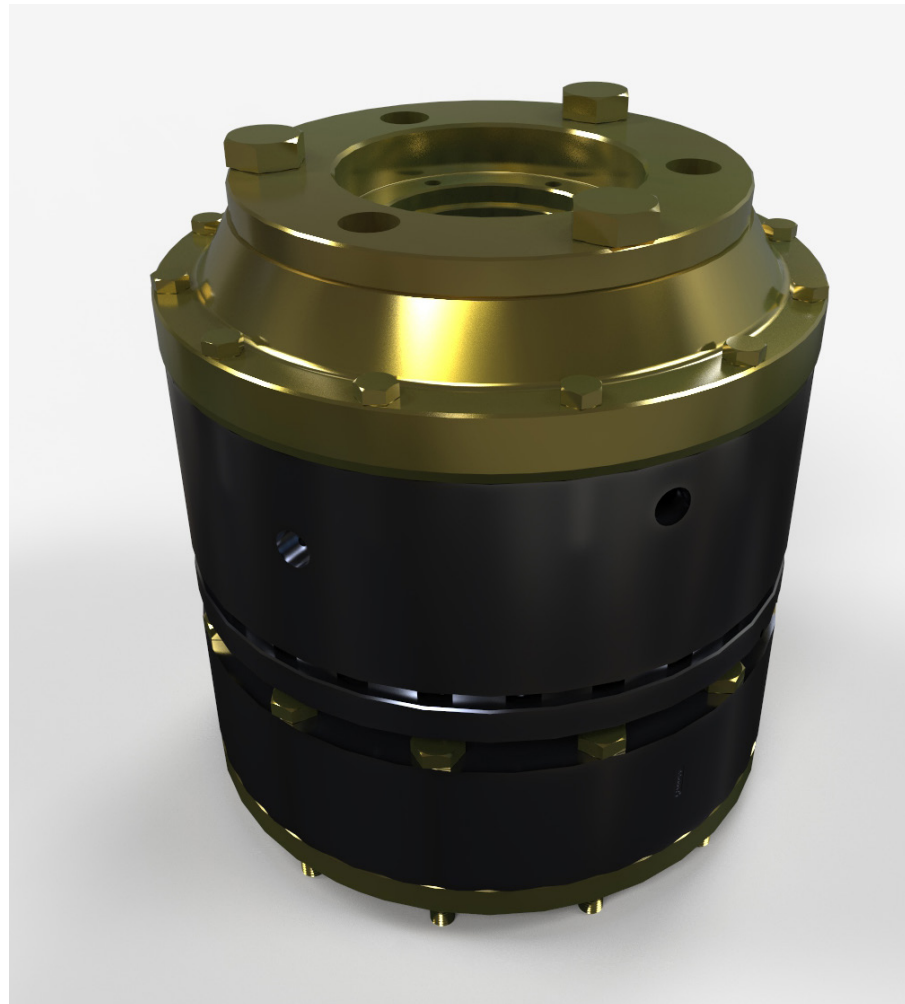
Specifications

Description

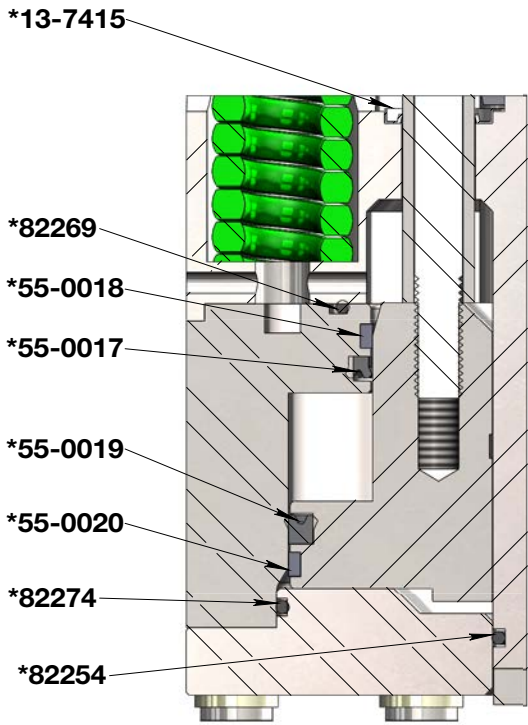
- Spring applied, hydraulic release
- P W/L rod capacity , 4-7/8" inside diameter (124mm)
- Each set uses 9 jaws with 3 carbides each

Specifications

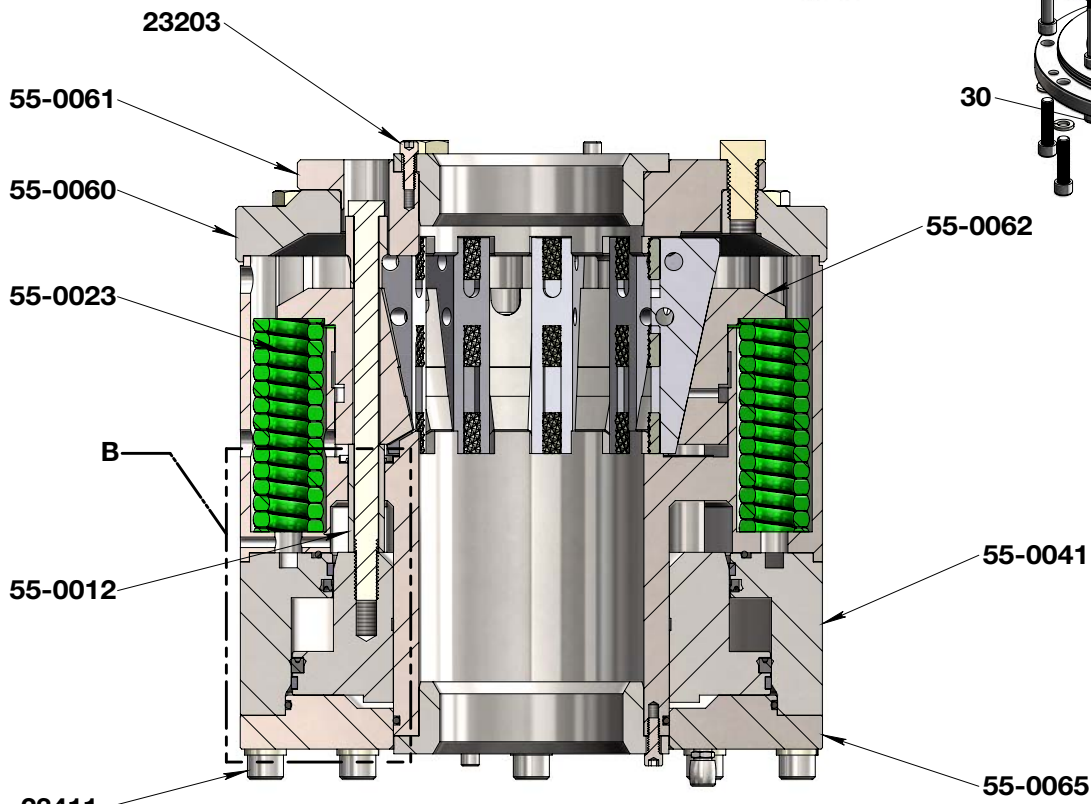
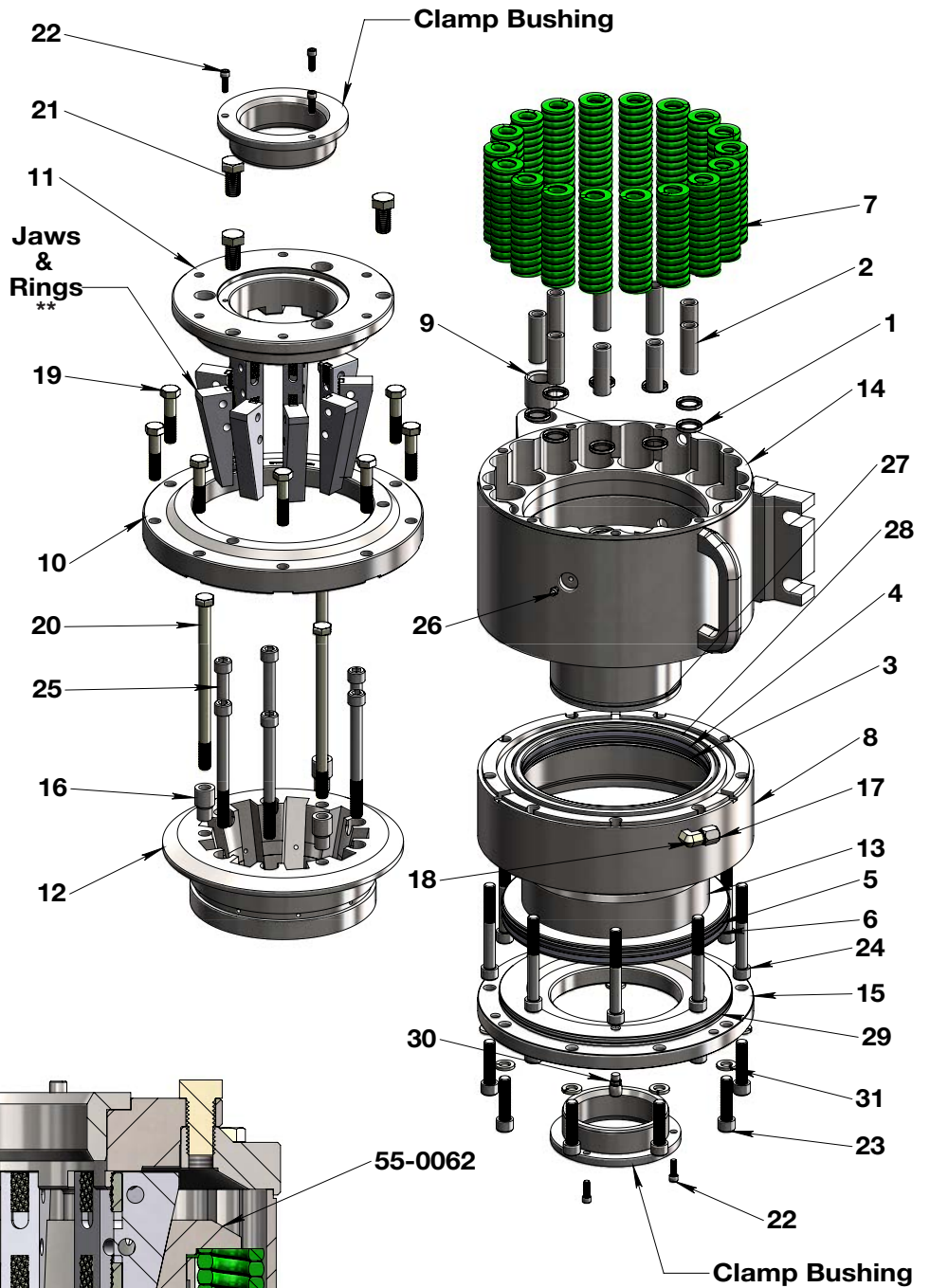
Maximum Inside Diameter	4.875" (124 Mm)
Holding Capacity	34,000 Lbs (15,500 Kg)
Weight	465 Lbs (210 Kg)



4 CHUCK & ROD CLAMP



DETAIL B
SCALE 1 : 2



Boyles P Clamp

Assembly Kit Order

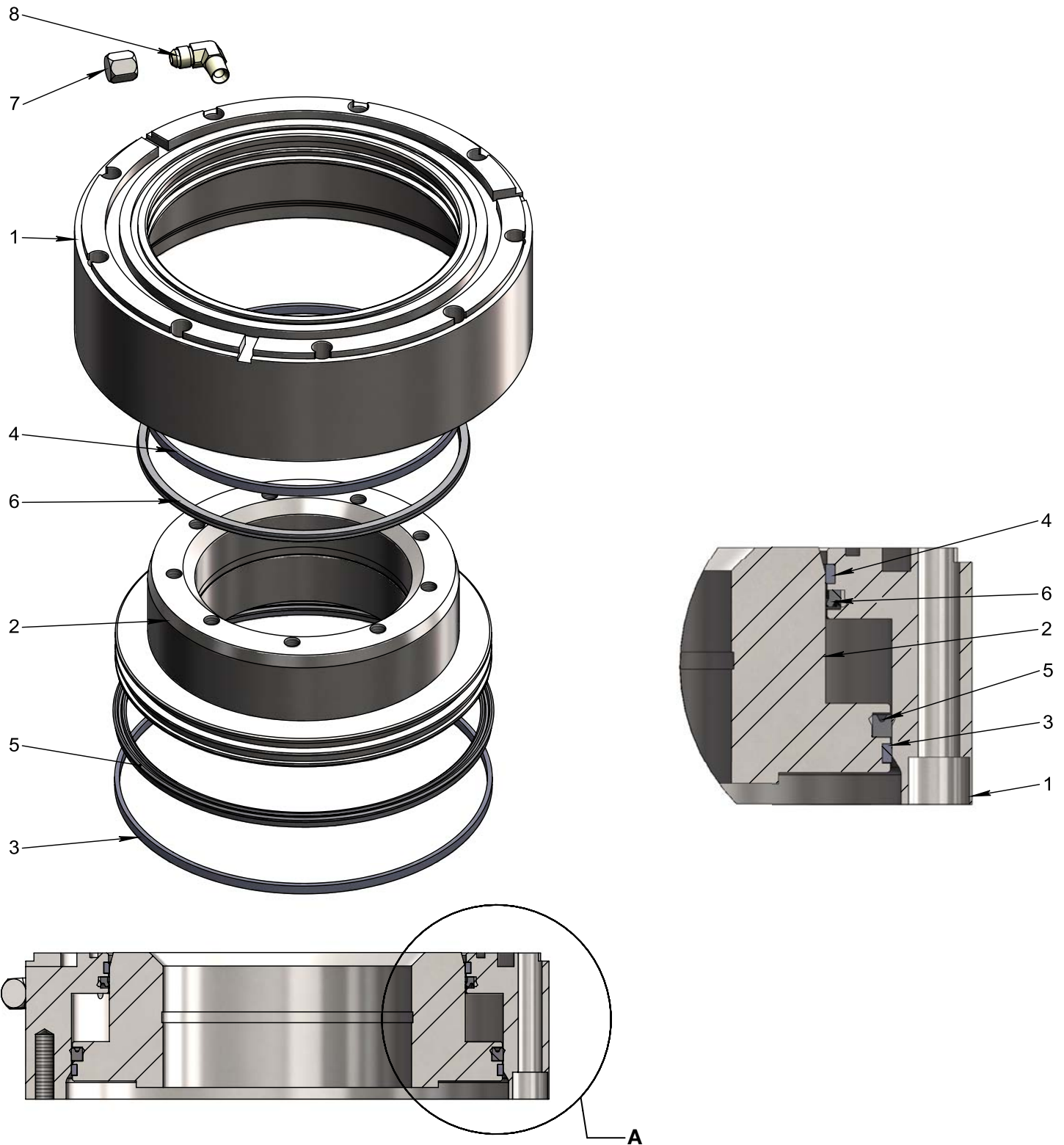
Item #	Part #	Description	Weight (lbs)	Copco P/N	Mirow P/N
1-34	55-2000	12HH Rod Clamp Assembly	275	2920224	18120001

Parts List

Item #	Part #	Description	Qty	Copco P/N	Mirow P/N
1	13-7415	Oil Seal	9	5040192	18100156
2	55-0012	Bottom Spacer	9	3506880	18100059
3	55-0017	U Cup Seal, Ø8-1/4"	1	5035016	18100062
4	55-0018	Wear Ring, Ø8-1/4"	1	5035018	18100063
5	55-0019	U Cup Seal, Ø10"	1	5035015	18100061
6	55-0020	Wear Ring, Ø10"	1	5035017	18100064
7	55-0023	Compression Spring	18	5200517	18100155
8	55-0041	Clamp Cylinder	1	2920332	18100052
9	55-0045	Housing Bushing	2	5020126	18100336
10	55-0060	P Clamp, Top Cap Holder	1	mod-3506906	18100168
11	55-0061	P Clamp, Top Cap Adapter	1	mod-3506907	18100167
12	55-0062	P Clamp, Slotted Bowl	1	mod-2920390	18100169
13	55-0063	P Clamp, Piston	1	mod-2920331	18100171
14	55-0064	P Clamp, Housing	1	mod-2920455	18100170
15	55-0065	P Clamp, Cylinder Cap	1	mod-2920333	18100172
16	55-0067	Top Spacer, Notched	3	mod-3506878	18100202
17	0304C-06	Female JIC Flare Cap, #6	1		
18	2501-0604	90° M-JIC #6 / M-NPT #4	1	5290662	
19	15212	1/2-13 x 2-1/4" Grade 8 Yellow Zinc Finish Hex Cap Screw	9	5115303	HHCS120132145
20	15229	1/2-13 x 8" Grade 8 Yellow Zinc Finish Hex Cap Screw	3	5125803	HHCS120138005
21	15307	5/8-11 x 1-1/4" Grade 8 Yellow Zinc Finish Hex Cap Screw	3		
22	23203	1/4-20 x 3/4" Hex Drive Alloy Steel Socket Cap Screw	6		
23	23411	1/2-13 x 2" Hex Drive Alloy Steel Socket Cap Screw	9	5115216	SHCS12013200
24	23419	1/2-13 x 4" Hex Drive Alloy Steel Socket Cap Screw	9	5125016	SHCS12013400
25	23424	1/2-13 x 5-1/2" Hex Drive Alloy Steel Socket Cap Screw	6		SHCS12013512
26	58834	1/4-28 Straight Steel Zinc Self-Tapping Grease fitting	1	5200812	GF14028S
27	82254	O-Ring	1	5030254	18100200
28	82269	O-Ring	1	5030269	18100191
29	82274	O-Ring	1	5030274	18100192
30	300805	Air Breather, 1/8 NPT	1	7500346	18100173
31	1133626	1/2 Zinc Finish Medium Split Lock Washer	9		

* Seal Kit #55-0058 includes items marked *
 ** Jaw set includes 9 matched jaws serviced only in sets of 9

4 CHUCK & ROD CLAMP





Boyles P Clamp Cylinder/Piston Assembly

Assembly Kit Order

Item #	Part #	Description	Weight (lbs)
1-8	55-0400	Boyles P Clamp Piston/Cylinder Assy	64,4

Parts List

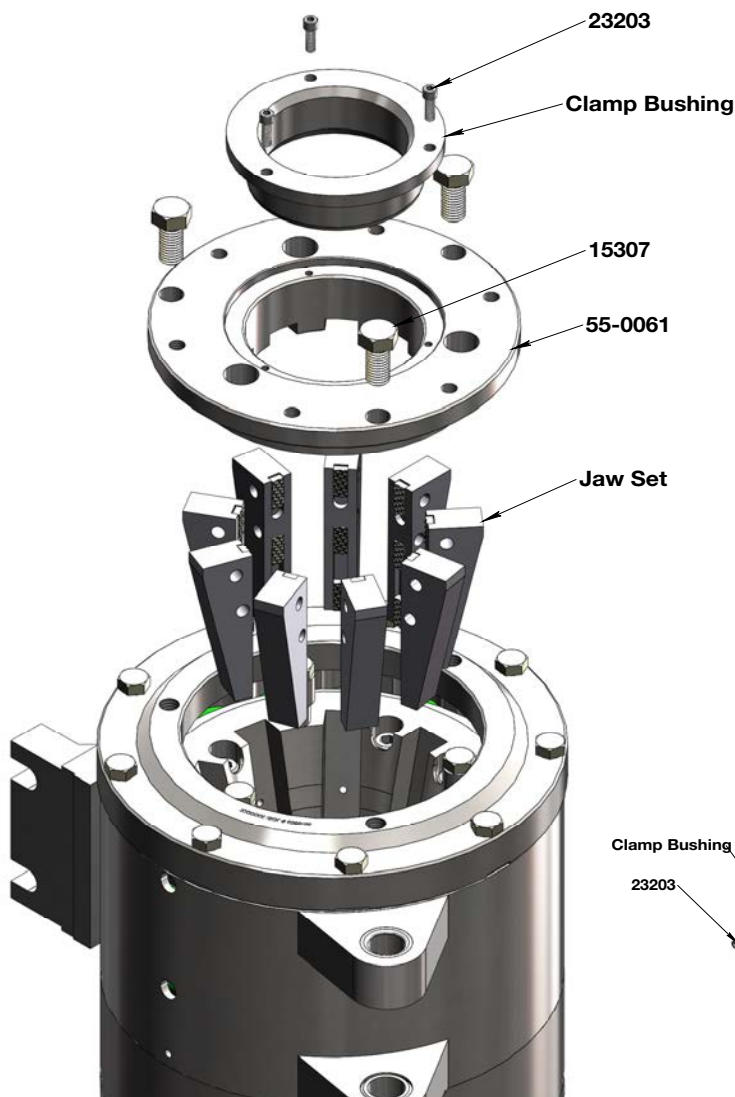
Item #	Part #	Description	Qty	Weight (lbs)
1	55-0041	Clamp Cylinder	1	36,013
2	55-0063	P Clamp, Piston	1	28,103
3	55-0020	Wear Ring, Ø10"	1	0,040
4	55-0018	Wear Ring, Ø8-1/4"	1	0,034
5	55-0019	U Cup Seal, Ø10"	1	0,084
6	55-0017	U Cup Seal, Ø8-1/4"	1	0,043
7	0304C-06	Female JIC Flare Cap, #6	1	0,059
8	2501-0604	90° M-JIC #6 / M-NPT #4	1	0,100

4 CHUCK & ROD CLAMP

Options & Accessories

Jaws & Chuck/Clamp Bushings

SIZE	Jaw Set			Jaw Retaining Ring		Clamp Bushing		
	X-Spec P/N	Copco P/N	Mirow P/N	X-Spec P/N	Mirow P/N	X-Spec P/N	Copco P/N	Mirow P/N
BW/BWL/BQ ROD AW CSG	30-17-01	mod-2920392	18100174	30-202 2 RQ'D	18100208	55-0068	mod-2920460	18100180
NWL/NQ ROD	30-17-02	mod-2920394	18100176			55-0069	mod-29204654	18100182
BW CSG	30-17-06	mod-2920395	18100175			55-0072		
HW/HWL/HQ ROD NW CSG	30-17-03	mod-2920396	18100177			55-0070		18100184
PW/PWL/PQ ROD HW CSG	30-17-04		18100178	30-203 30-204 1 RQ'D of Each	18100209 18100484 1 RQ'D of Each	55-0071		18100185

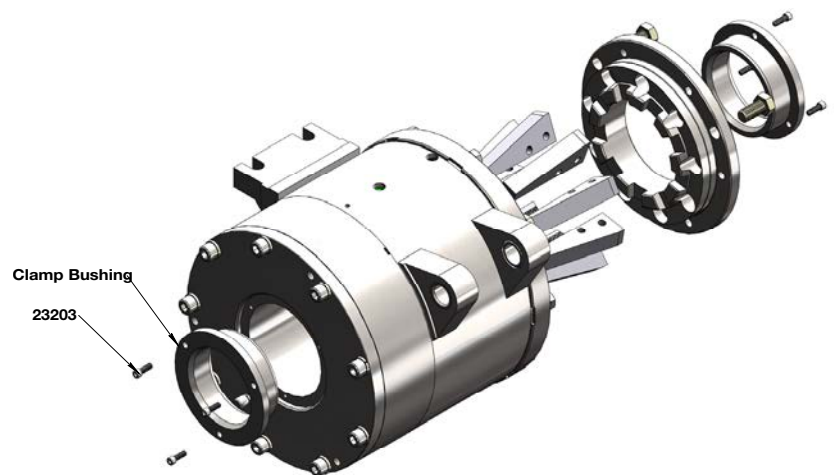


To Change Clamp Bushing:

- Remove the 3x 1/4-20 x 3/4 Hex Drive Steel Socket Cap Screw (23203)
- Remove bushing

To Change Jaw Set:

- Remove the 3x 5/8-11 x 1-1/4" Grade 8 Yellow Zinc Finish Hex Cap Screw (15307)
- Remove Top Cap Adapter (55-0061)
- Remove jaws set

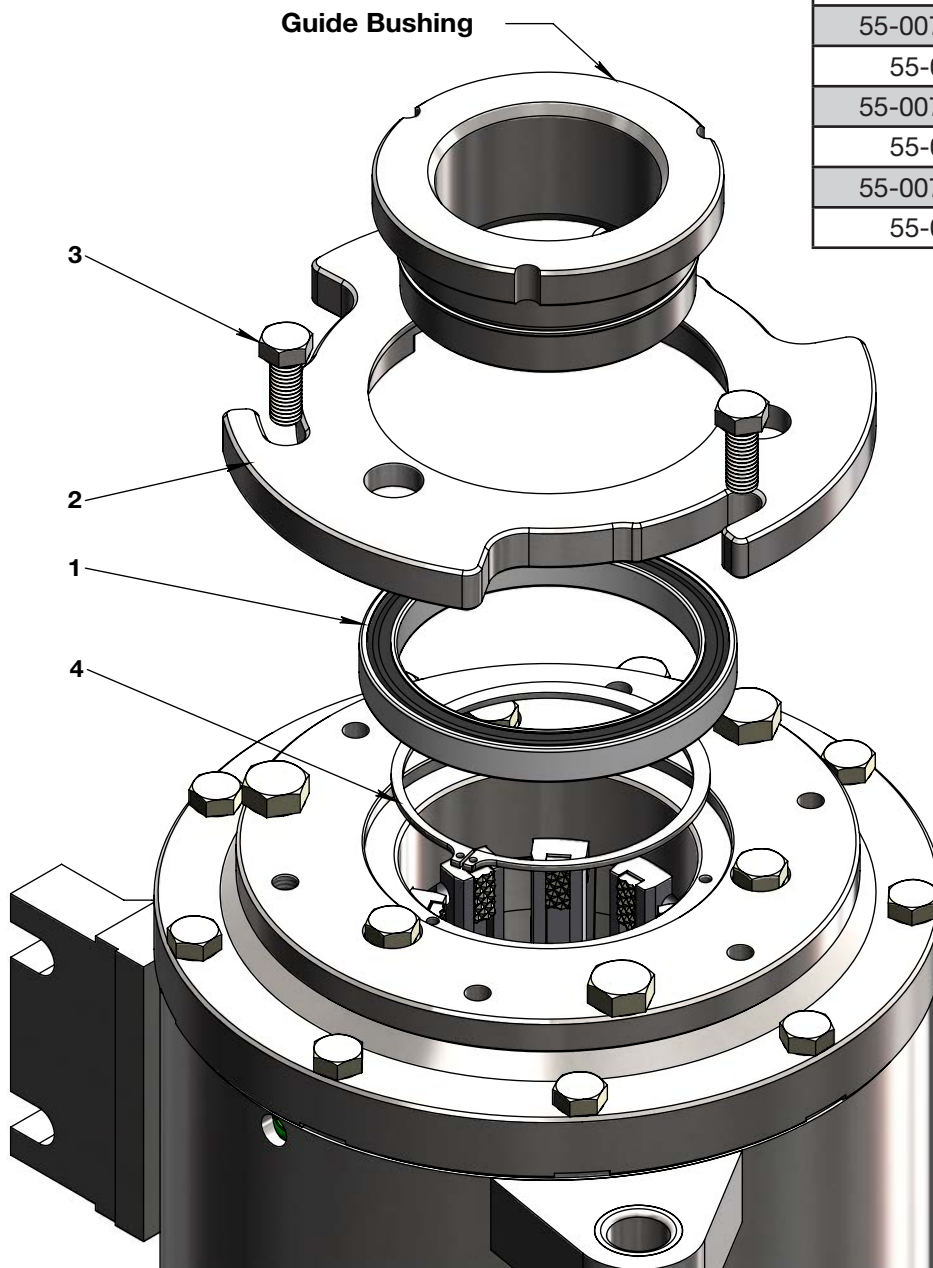


Options & Accessories

Bearing guide bushing assembly

Item #	Part #	Description	Qty	Weight (lbs)
1	15-6824-2RS	Single Row Ball Bearing	1	1.047
2	55-0079	P Clamp, Guide Bushing Support Plate	1	7.014
3	15207	1/2-13 x 1-1/4" Grade 8 Yellow Zinc Finish Hex Cap Screw	3	0.1037
4	045100-0475	External Retaining Ring, N5100-475	1	0.1047
5	See Table	Guide Bushing	1	

Guide Bushing	
Part #	Size
55-0075	B W/L
55-0075-SHL	B W/L Reaming Shell
55-0076	N W/L
55-0076-SHL	N W/L Reaming Shell
55-0077	H W/L
55-0077-SHL	H W/L Reaming Shell
55-0078	P W/L



4 CHUCK & ROD CLAMP

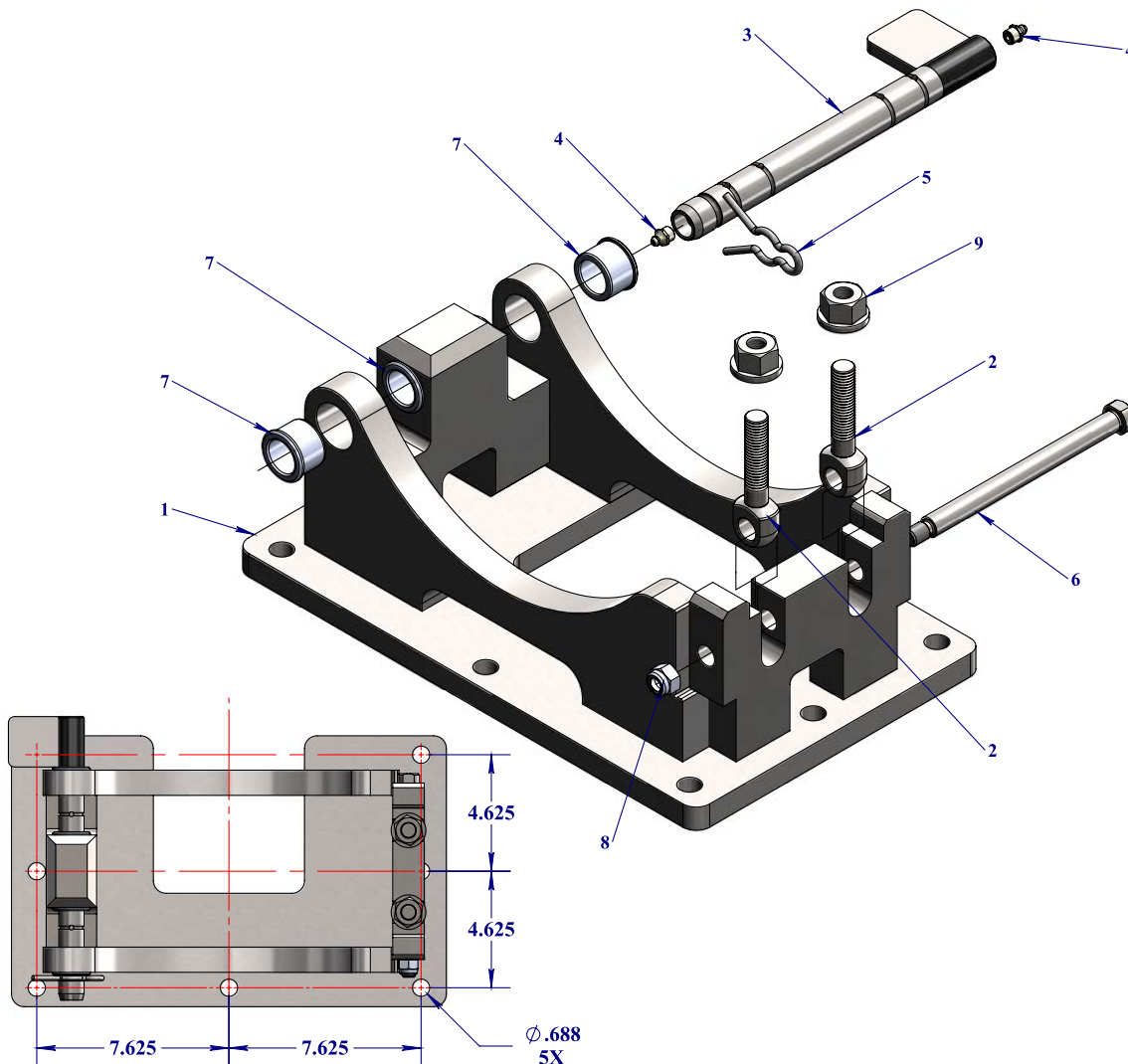
Options & Accessories

Rod Clamp Base

Assembly Kit Order

Item #	Part #	Description	Weight (lbs)
1-8	55-4000	Rod Clamp Base Assy	79.2

Item #	Part #	Description	Qty	Weight (lbs)
1	55-4010	Rod Clamp Base Weldment	1	72.597
2	2750-12-12	Eye Bolt, 5/8-11 UNC X 2-3/4" Lg	2	0.416
3	55-0083	Rod Holder Pivot Pin	1	2.62
4	58831	1/8-27 Straight Steel Zinc Self-Tapping Grease fitting	2	0.017
5	090-107	Zinc-Plated, Steel Hairpin Clip, 1" Shaft Diameter	1	0.051
6	90-132	Eye Bolt Pivot Pin	1	0.656
7	25-886414	H/T Bushing, Ø1.375" OD X Ø1.000" ID X 0.875" Lg	4	0.201
8	37527	1/2-13 Grade 2 Zinc Finish NE Steel Nylon Insert Lock Nut	1	0.05
9	400806	Flanged Nut, 5/8-11 UNC	2	0.2





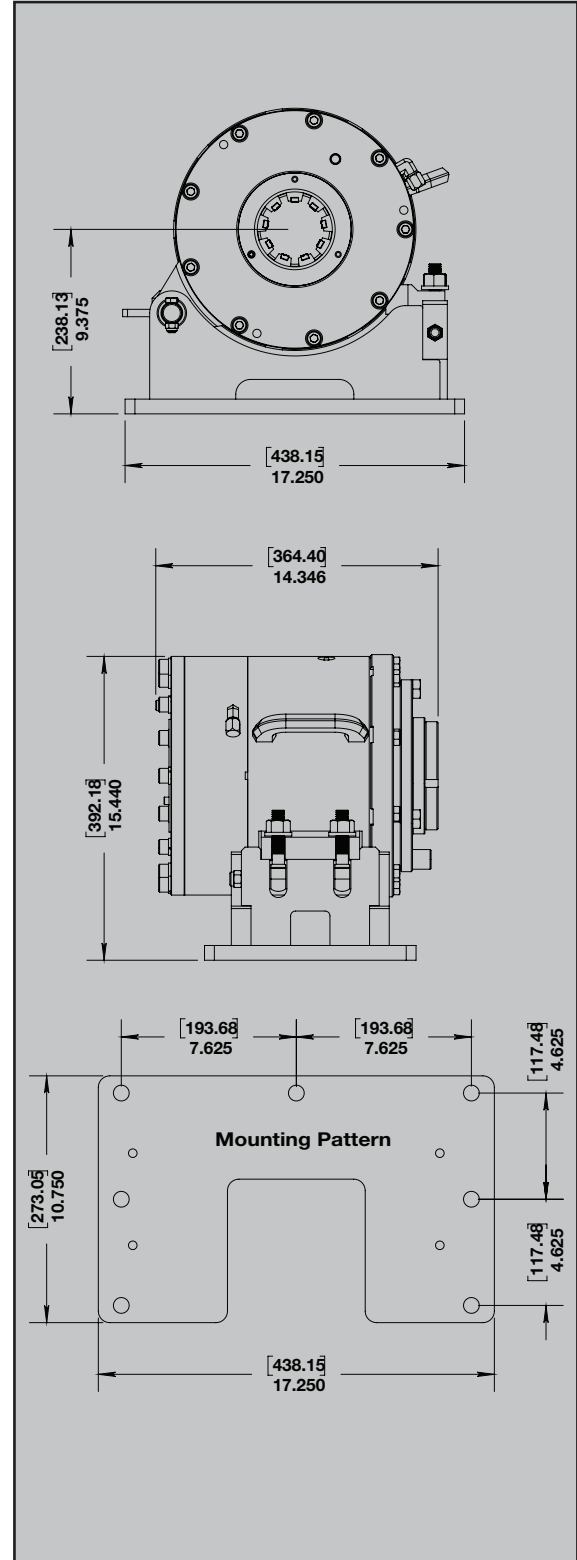
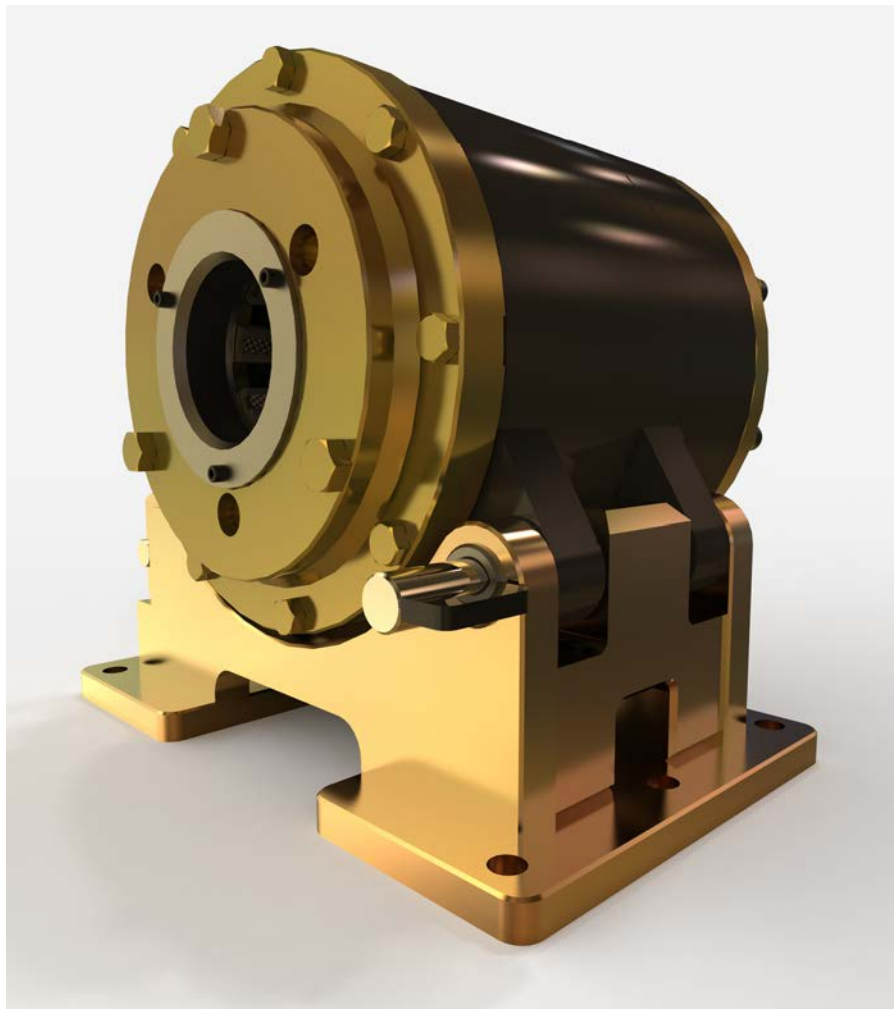
Specifications

Description

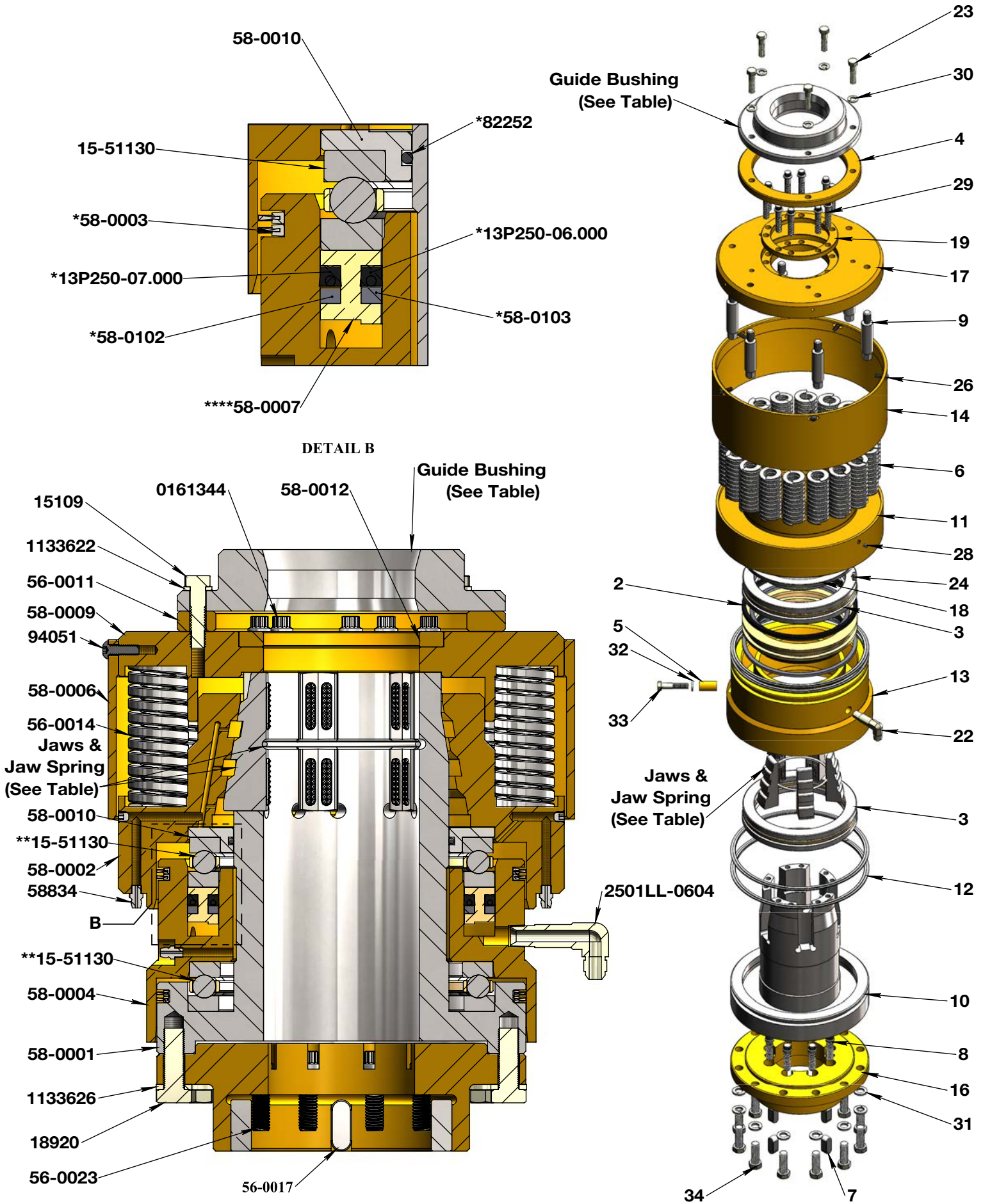
- Spring applied, hydraulic release
- P rod capacity , 4-11/16" inside diameter (119mm)
- Bearing guided centering bushing kit available
- Each set uses 9 jaws with 3 carbides each (2 holes)
- Same mount pattern and center height as 12HH rod clamp

Specifications

Maximum Inside Diameter	4.688" (119 Mm)
Holding Capacity	26,000 Lbs (11,800 Kg)
Weight (Clamp Only)	265 Lbs (120 Kg)
Weight (With Base)	340 Lbs (155 Kg)



4 CHUCK & ROD CLAMP





XH Chuck

Assembly Kit Order

Item #	Part #	Description	Weight (lbs)
1-34	58-1000	XH Chuck Assembly	203

Parts List

Item #	Part #	Description	Qty	Weight (lbs)
1	13P250-06.000	U-Cup Seal	1	0.049
2	13P250-07.000	U-Cup Seal	1	0.057
3	15-51130	Thrust Bearing	2	5.229
4	56-0011	Spacer Ring	1	2.811
5	58-0013	Spacer Tube	1	0.049
6	56-0014	Compression Spring	18	0.877
7	56-0017	Key	4	0.08
8	56-0023	Special Bolt, Short	8	0.08
9	56-0064	Spring Guide	6	0.376
10	58-0001	Base, XH Chuck	1	34.009
11	58-0002	Chuck Bowl, XH Chuck	1	38.993
12	58-0003	Brush Seal, XH Chuck	4	0.212
13	58-0004	Cylinder	1	24.888
14	58-0006	Spring Guard, XH Chuck	1	8.854
15	58-0007	Piston, XH Chuck	1	2.837
16	58-0008	Adapter Plate, XH Chuck	1	17.573
17	58-0009	Top Plate, XH Chuck	1	22.225
18	58-0010	Seal Retainer, XH Chuck	1	1.983
19	58-0012	Spacer, XH Chuck	1	0.749
20	58-0102	Outside Guide	1	0.044
21	58-0103	Inside Guide	1	0.038
22	2501LL-0604	90° Extra Long M-JIC #6 / M-NPT #4	1	0.153
23	15109	3/8-16 x 1-1/2" Grade 8 Yellow Zinc Finish Hex Cap Screw	5	0.0626
24	58834	1/4-28 Straight Steel Zinc Self-Tapping Grease fitting	3	0.01
25	82252	O Ring	1	0.012
26	94051	1/4-20 x 3/4" Hex Drive Steel Button Socket Cap Screw	5	0.012
27	94133	1/4" NPTF Steel Socket Head Pipe Plug 3/4" Taper Dryseal	1	0.019
28	141571	1/4-28 x 1/4" Hex Drive Cup Point Steel Socket Set Screw	2	0.002
29	161344	3/8-24 x 1-3/4" 12 Point Flanged Steel Ferry Cap Screw	10	0.066
30	1133622	3/8 Zinc Finish Medium Split Lock Washer	5	0.006
31	1133626	1/2 Zinc Finish Medium Split Lock Washer	12	0.013
32	1133622	3/8 Zinc Finish Medium Split Lock Washer	1	0.006
33	18839	3/8-24 x 1-3/4" Grade 8 Yellow Zinc Finish Hex Cap Screw	1	0.0701
34	18920	1/2-20 x 1-1/2" Grade 8 Yellow Zinc Finish Hex Cap Screw	12	0.12

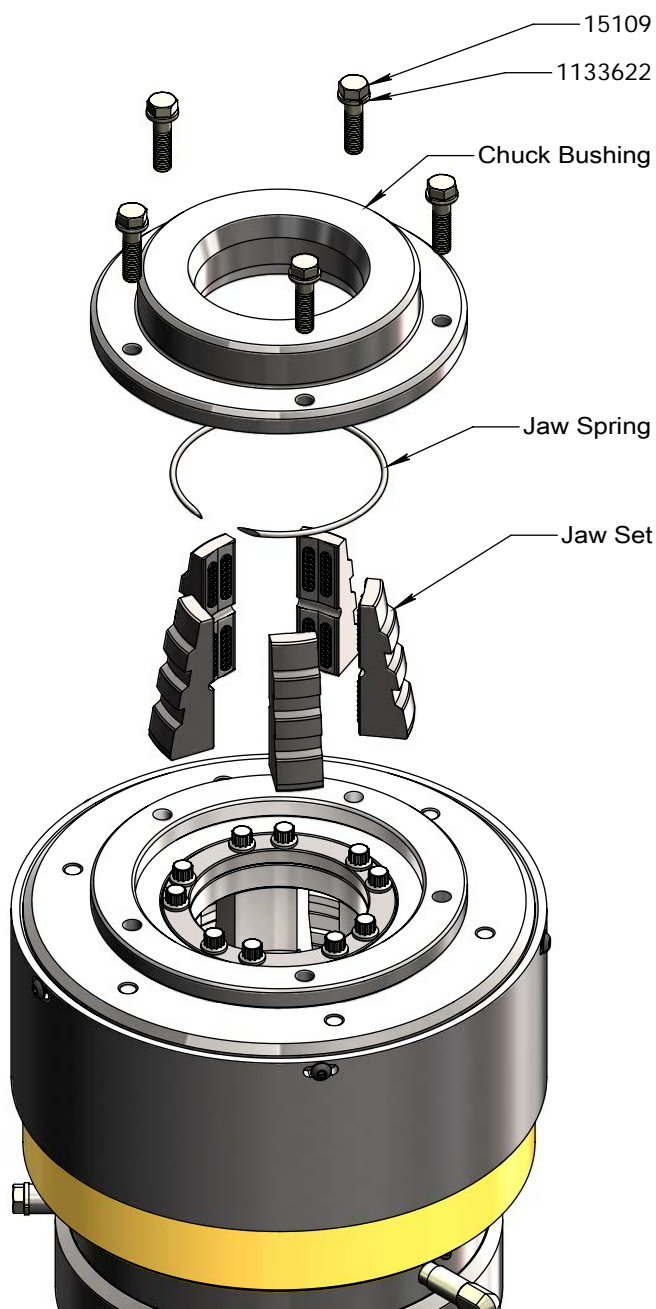
- * Seal Kit #58-0105 includes items marked *
- ** Pack with grease before installing in chuck assembly
- *** Seal Kit #58-0110 includes piston 58-0007

4 CHUCK & ROD CLAMP

Options & Accessories

Jaws & Chuck Bushings

SIZE	Jaw Set	Chuck Bushing	Jaw Spring
BW/BWL/BQ ROD AW CSG	30-22-01	56-0020	56-0040
NWL/NQ ROD	30-22-02	56-0021	56-0041
HW/HWL/HQ ROD NW CSG	30-22-03	56-0022	56-0042



To Change Bushing:

- Remove the 5x 3/8-16 x 1-1/2" Grade 8 Yellow Zinc Finish Hex Cap Screw (15109)
- Remove Chuck Bushing

To Change Jaw Set:

- Remove the 5x 3/8-16 x 1-1/2" Grade 8 Yellow Zinc Finish Hex Cap Screw (15109)
- Remove Chuck Bushing
- Remove jaws Spring
- Remove Jaw Set

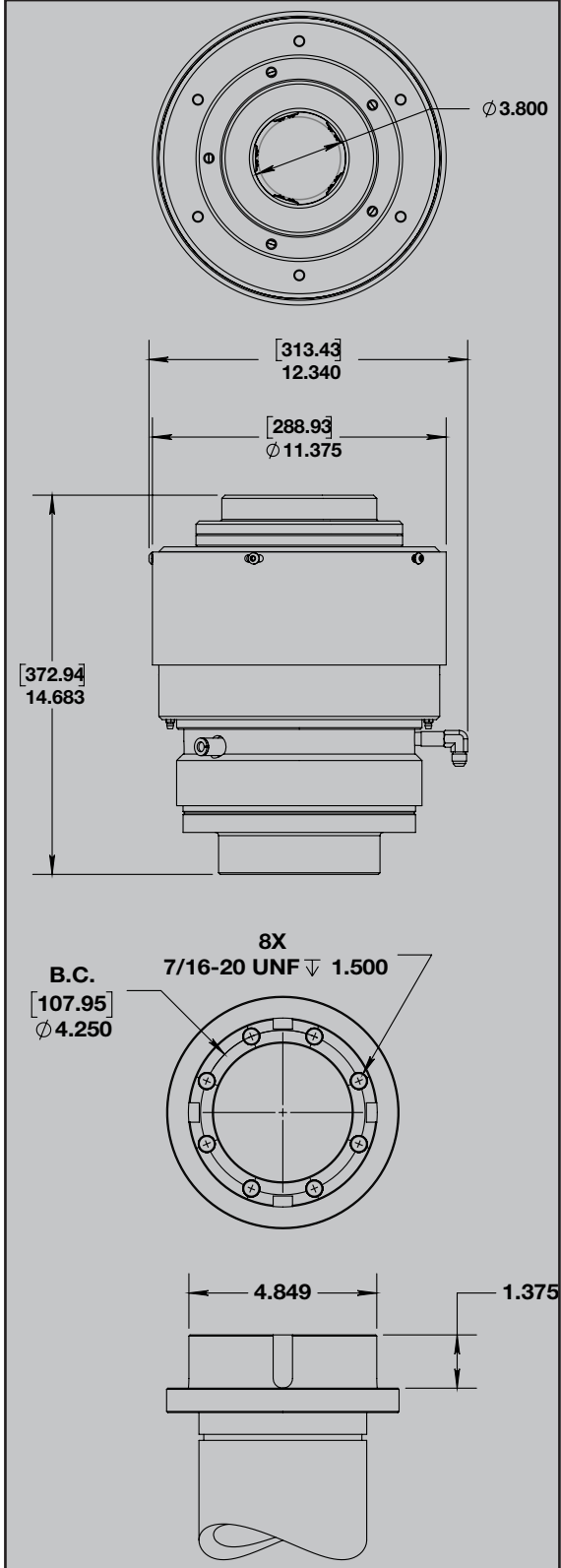
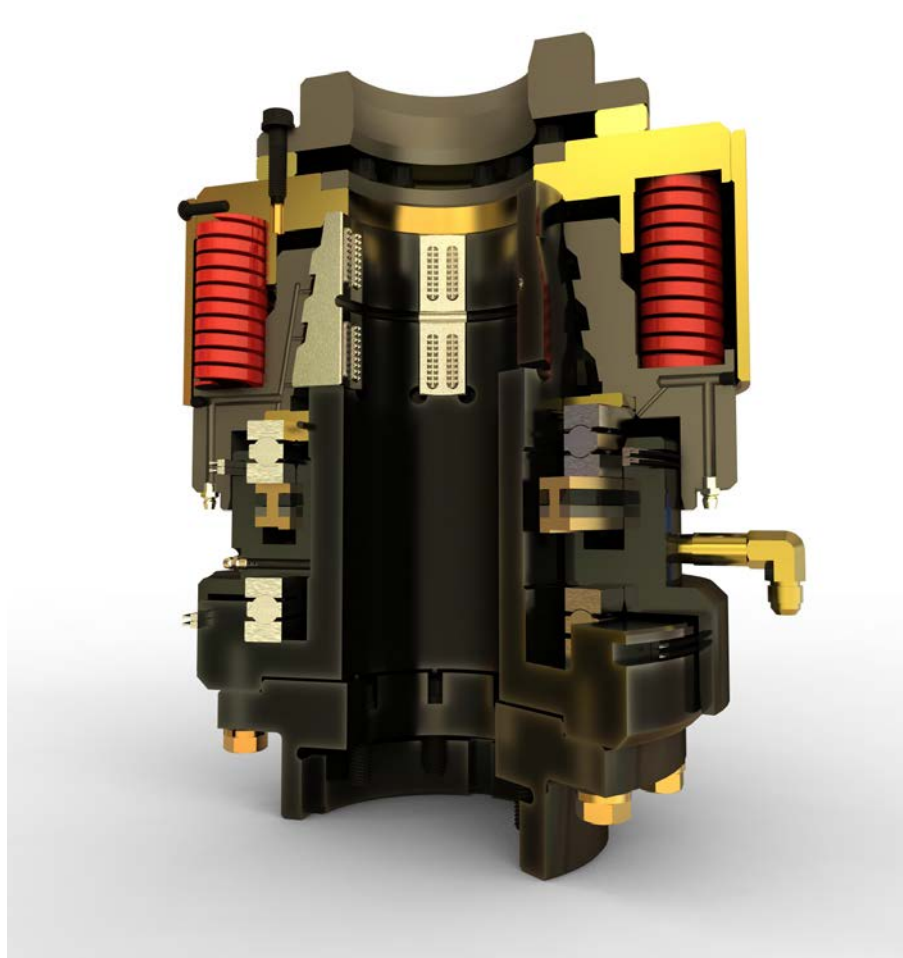
Specifications

Description

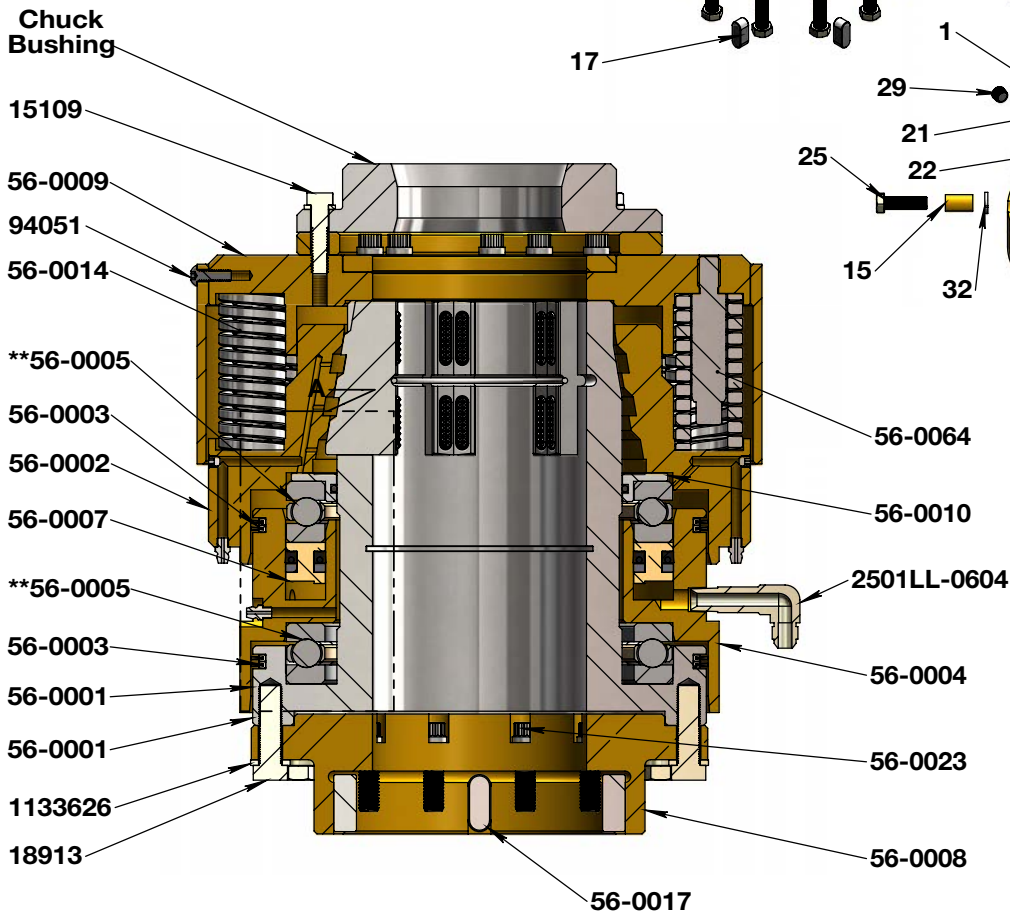
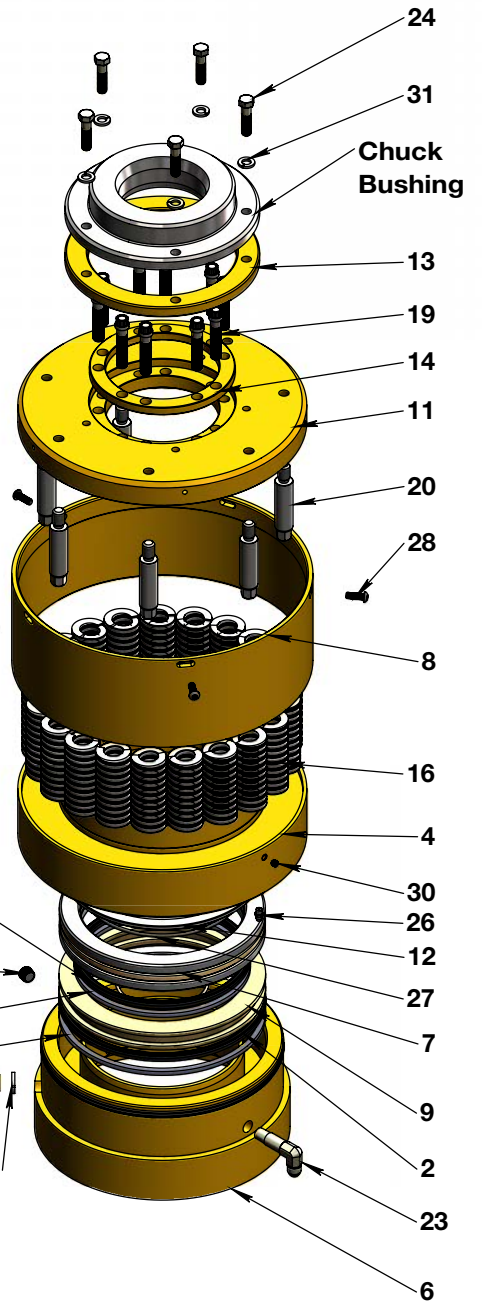
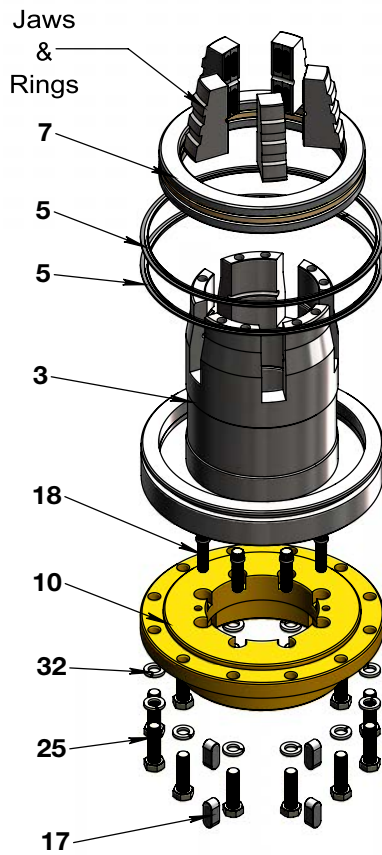
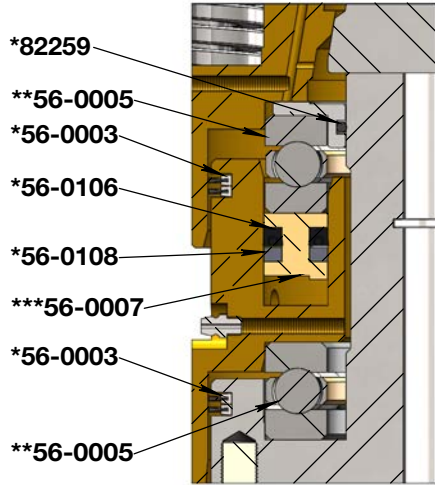
- Spring applied, hydraulic release
- H W/L rod capacity , 3-11/16" inside diameter (93mm)
- Each set uses 5 jaws with 4 carbides each

Specifications

Maximum Inside Diameter	3.800" (96.5 mm)
Holding Capacity	34,000 Lbs (15,500 Kg)
Weight (Without jaws and bushing)	188 Lbs (125 Kg)



4 CHUCK & ROD CLAMP





Christensen P Chuck

Assembly Kit Order

Item #	Part #	Description	Weight (lbs)
1-34	56-1000	Christensen P Chuck Assembly	205

Parts List

Item #	Part #	Description	Qty	Weight (lbs)
1	13P250-06.750	Inside Seal	1	0.06
2	13P250-08.000	Outside Seal	1	0.071
3	56-0001	Chuck Base	1	41.644
4	56-0002	Chuck Bowl	1	43.921
5	56-0003	Brush Seal	4	0.16
6	56-0004	Cylinder	1	26.527
7	56-0005	Ball Thrust Bearing, Christensen Chuck	2	6.592
8	56-0006	Spring Guard	1	9.665
9	56-0007	Piston, Brass	1	4.022
10	56-0008	Adapter plate	1	20.627
11	56-0009	Top Plate	1	25.435
12	56-0010	Seal Retainer	1	1.603
13	56-0011	Spacer Ring	1	2.811
14	56-0012	Spacer	1	0.983
15	56-0013	Spacer Tube	1	0.049
16	56-0014	Compression Spring	21	0.877
17	56-0017	Key	4	0.08
18	56-0023	Special Bolt, Short	8	0.08
19	56-0024	Special Bolt, Long	10	0.105918
20	56-0064	Spring Guide	7	0.376
21	56-0107	Inside Guide	1	0.043
22	56-0108	Outside Guide	1	0.05
23	2501LL-0604	90° Extra Long M-JIC #6 / M-NPT #4	1	0.153
24	15109	3/8-16 x 1-1/2" Grade 8 Yellow Zinc Finish Hex Cap Screw	5	0.0626
25	18913	1/2-20 x 1-3/4" Grade 8 Yellow Zinc Finish Hex Cap Screw	13	0.1326
26	58834	1/4-28 Straight Steel Zinc Self-Tapping Grease fitting	3	0.01
27	82259	O-Ring	1	0.0142
28	94051	1/4-20 x 3/4" Hex Drive Alloy Steel Button Socket Cap Screw	5	0.012
29	94133	1/4" NPTF Steel Socket Head Pipe Plug 3/4" Taper Dryseal	1	0.019
30	141571	1/4-28 x 1/4" Hex Drive Cup Point Steel Socket Set Screw	2	0.002
31	1133622	3/8 Zinc Finish Medium Split Lock Washer	5	0.006
32	1133626	1/2 Zinc Finish Medium Split Lock Washer	13	0.013

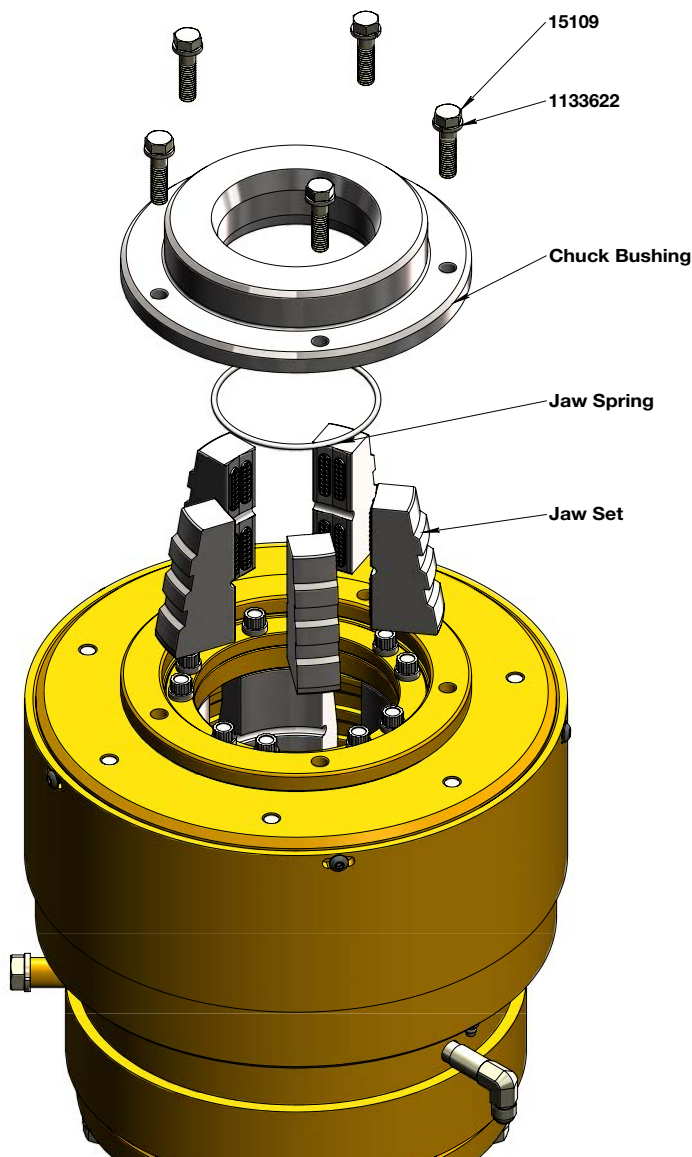
* Seal Kit #56-0105 includes items marked *
 ** Pack with grease before installing in chuck assembly
 *** Seal Kit #56-0110 includes piston 56-0007

4 CHUCK & ROD CLAMP

Options & Accessories

Jaws & Chuck Bushings

SIZE	Jaw Set		Guide Bushing		Jaw Spring	
	X-Spec P/N	Copco P/N	X-Spec P/N	Copco P/N	X-Spec P/N	Copco P/N
BW/BWL/BQ ROD AW CSG	30-20-01	3760007360	56-0020	3760007354	56-0040	3760009571
NWL/NQ ROD	30-20-02	3760007361	56-0021	3760007355	56-0041	3760009569
BW CSG	30-20-06	3760007362	56-0037	3760007356	56-0044	3760009561
HW/HWL/HQ ROD NW CSG	30-20-03	3760003350	56-0022	3760003317	56-0042	3760009572
PWL/PQ ROD HW CSG	30-20-04	3760007363	56-0036	3760007358	56-0043	3760009573



To Change Bushing:

- Remove the 5x 3/8-16 x 1-1/2" Grade 8 Yellow Zinc Finish Hex Cap Screw (15109)
- Remove Chuck Bushing

To Change Jaw Set:

- Remove the 5x 3/8-16 x 1-1/2" Grade 8 Yellow Zinc Finish Hex Cap Screw (15109)
- Remove Chuck Bushing
- Remove jaws Spring
- Remove Jaw Set

Options & Accessories

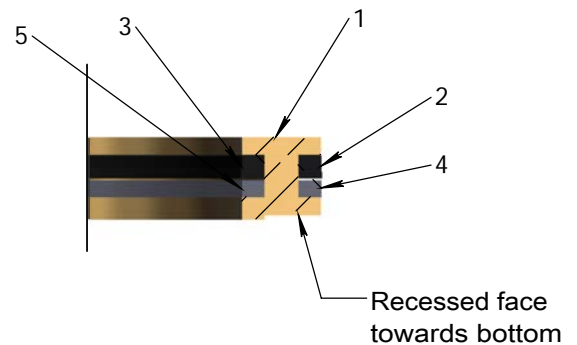
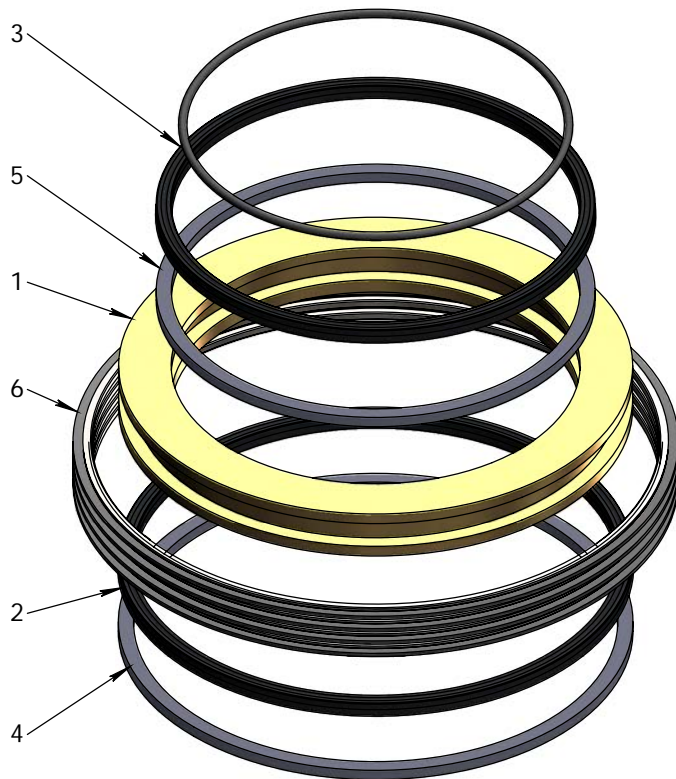
Piston & Seal Kit

Assembly Kit Order

Item #	Part #	Description	Weight (lbs)
1-7	56-0110	Seal Kit, C/W Piston	4.9
2-7	56-0105	Seal Kit	0.6

Parts List

Item #	Part #	Description	Qty	Weight (lbs)
1	56-0007	Piston, Brass	1	4.022
2	13P250-08.000	Outside Seal	1	0.071
3	13P250-06.750	Inside Seal	1	0.06
4	56-0108	Outside Guide	1	0.05
5	56-0107	Inside Guide	1	0.043
6	56-0003	Brush Seal	4	0.16
7	82259	O-Ring	1	0.0142



Assembled Piston
Cross-Section

Assembly Notes:

- Install nylon guides into piston (Items 4 & 5) first
- Install seals with the lip pointing towards the part of the piston with a recess
- When installing piston into cylinder 56-0004, (not shown) make sure the recessed face of the piston is pointing towards the bottom of the cylinder

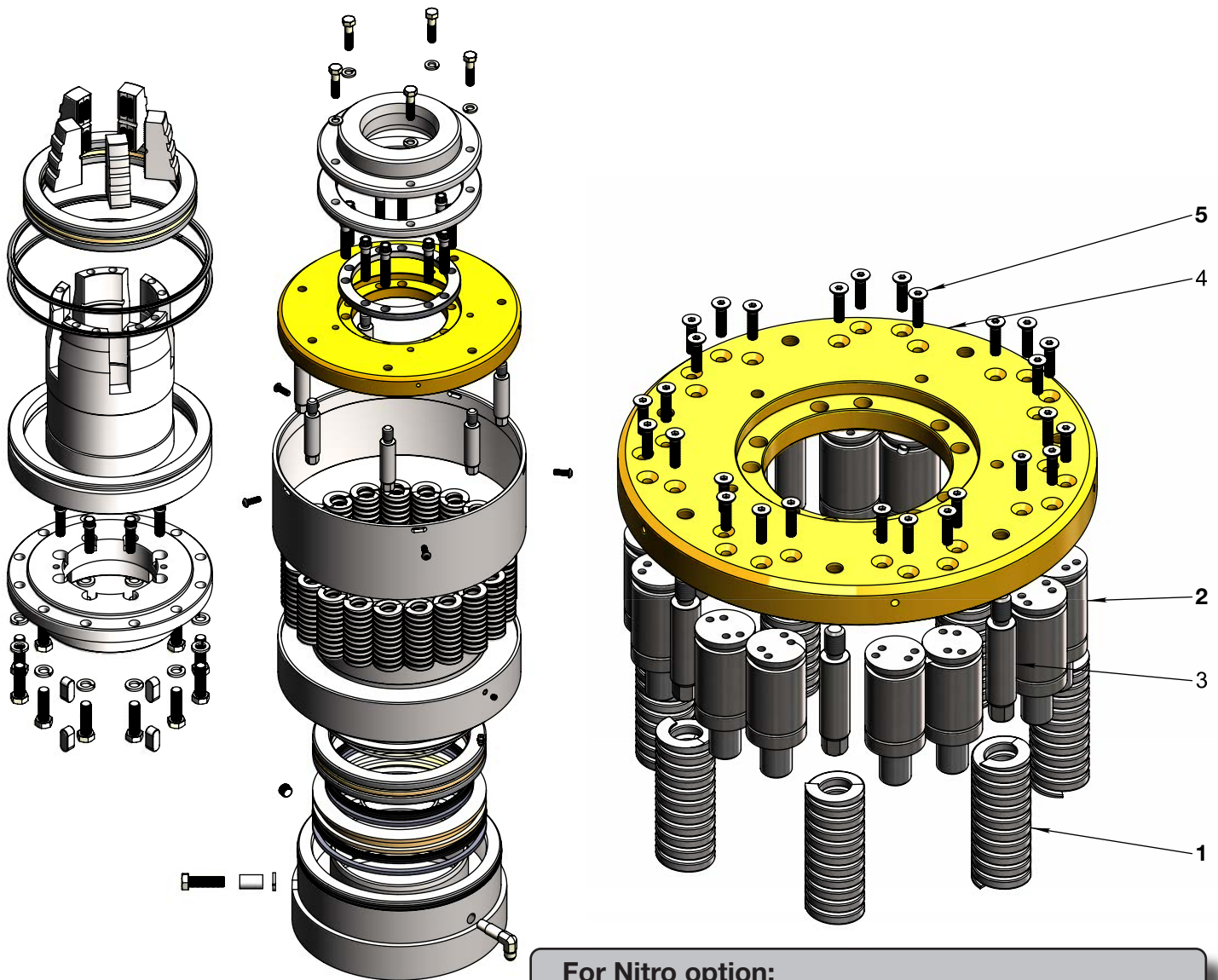
4 CHUCK & ROD CLAMP

Options & Accessories

Nitrogen Gas Spring Booster Kit

Parts List

Item #	Part #	Description	Qty	Weight (lbs)
1	56-0014	Compression Spring	7	0.878
2	56-0062	Nitrogen Gas Spring	14	1.293
3	56-0064	Spring Guide	7	0.376
4	56-0009-N	Top Plate, Nitro	1	25.018
5	141393	M6-1.0 x 25mm Hex Drive Zinc Steel Flat Socket Cap Screw	28	0.013



For Nitro option:

- Change original top plate 56-0009 for 56-0009-N
- Replace 14 compression springs with nitrogen gas springs



Options & Accessories

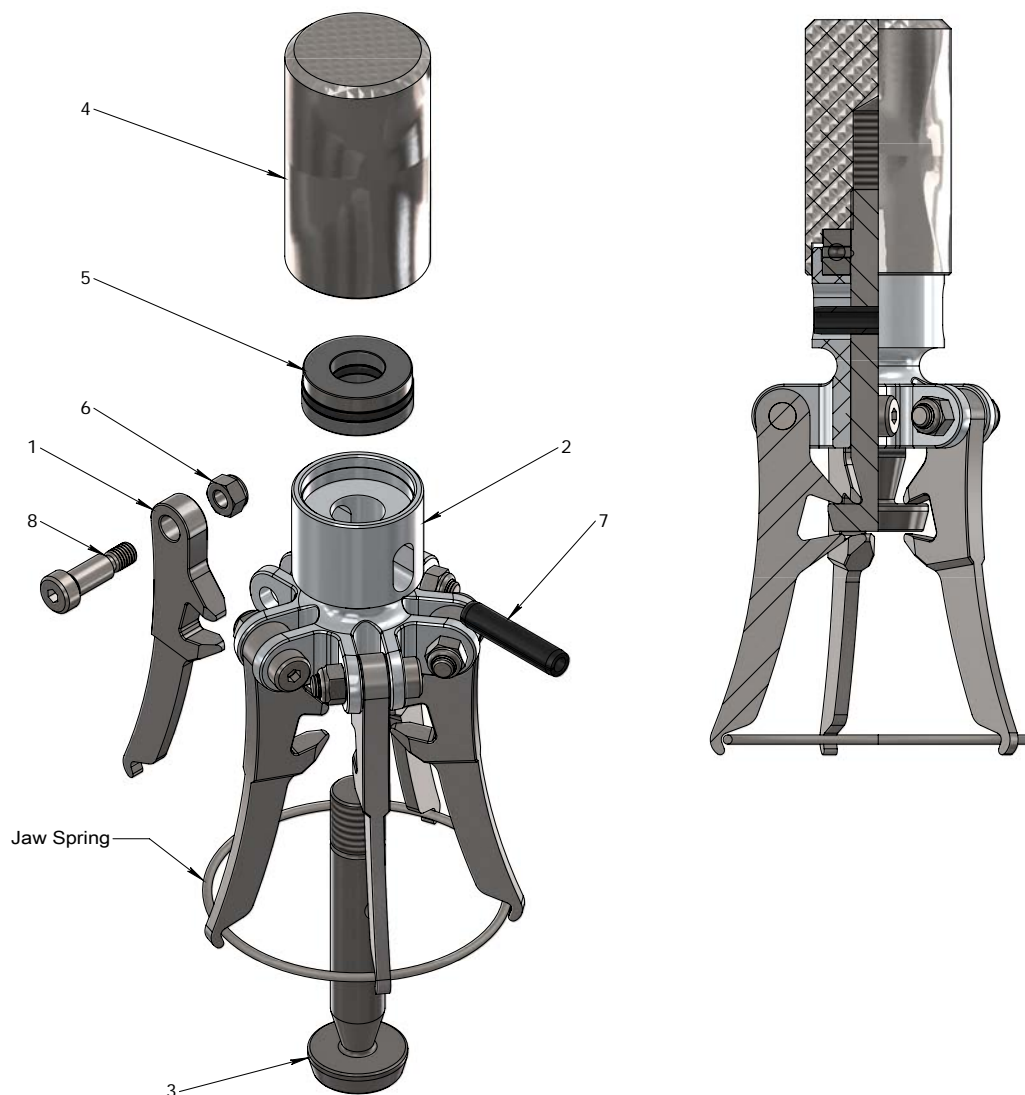
Jaw Spring Tool

Assembly Kit Order

Item #	Part #	Description	Weight (lbs)
1-8	56-0200	Jaw Spring Install Tool	3.813

Parts List

Item #	Part #	Description	Qty	Weight (lbs)
1	56-0201	Tool Leg	5	0.248
2	56-0202	Body	1	0.499
3	56-0203	Plunger	1	0.627
4	56-0204	Knob	1	0.861
5	18298	Thrust Bearing	1	0.2
6	37021	5/16-18 Grade 2 Zinc Finish NE Steel Nylon Insert Lock Nut	5	0.014
7	64313	3/8" x 1-3/4" Plain Finish Steel Slotted Spring Pin	1	0.0346
8	26329	3/8" Shoulder x 3/4" Shoulder Length Steel Socket Shoulder Bolt	5	0.047





4 CHUCK & ROD CLAMP

This page left intentionally blank

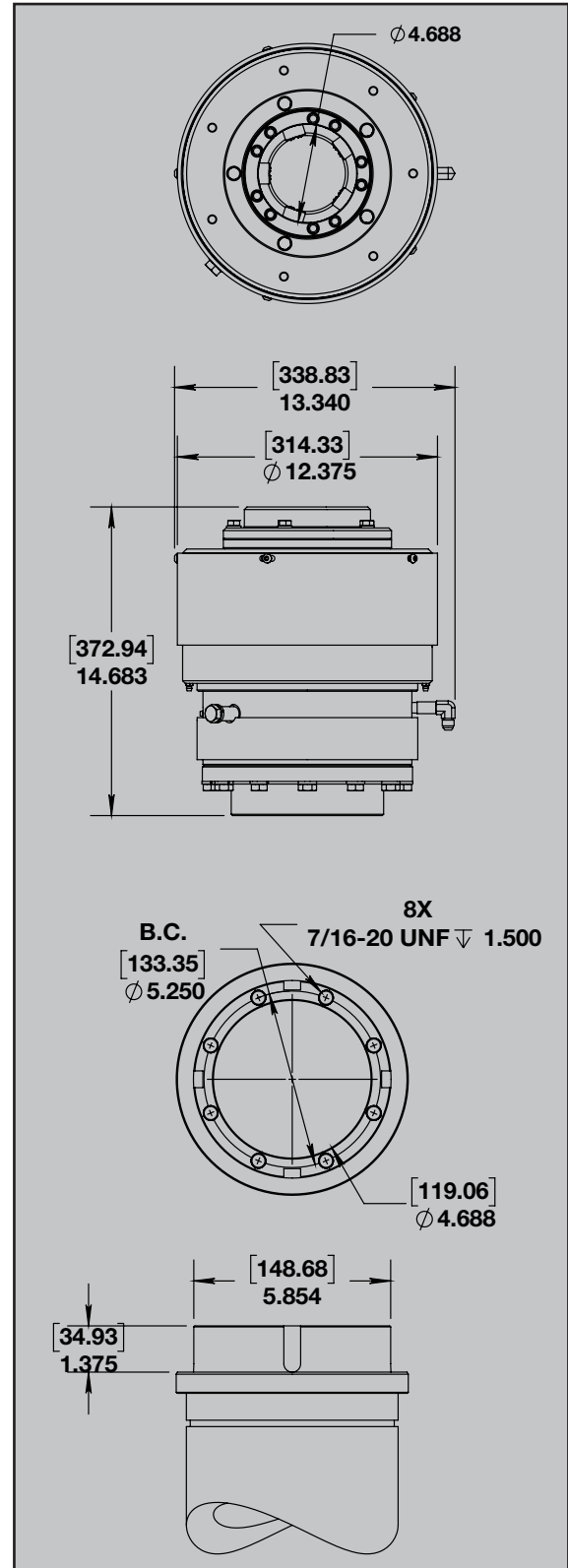
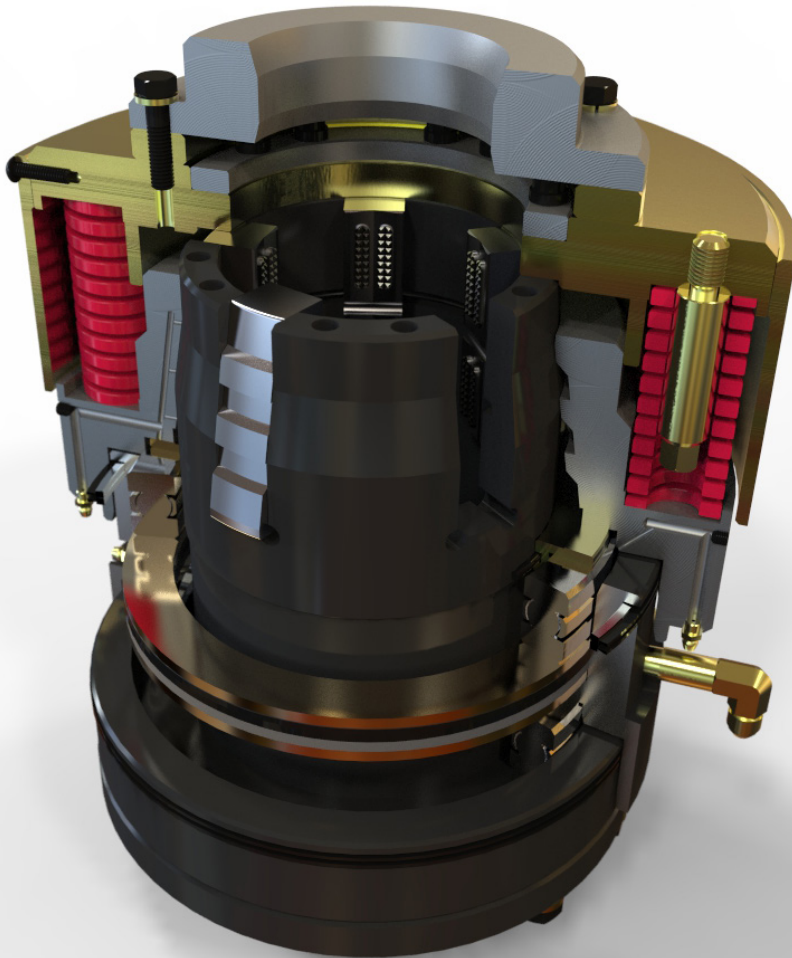
Specifications

Description

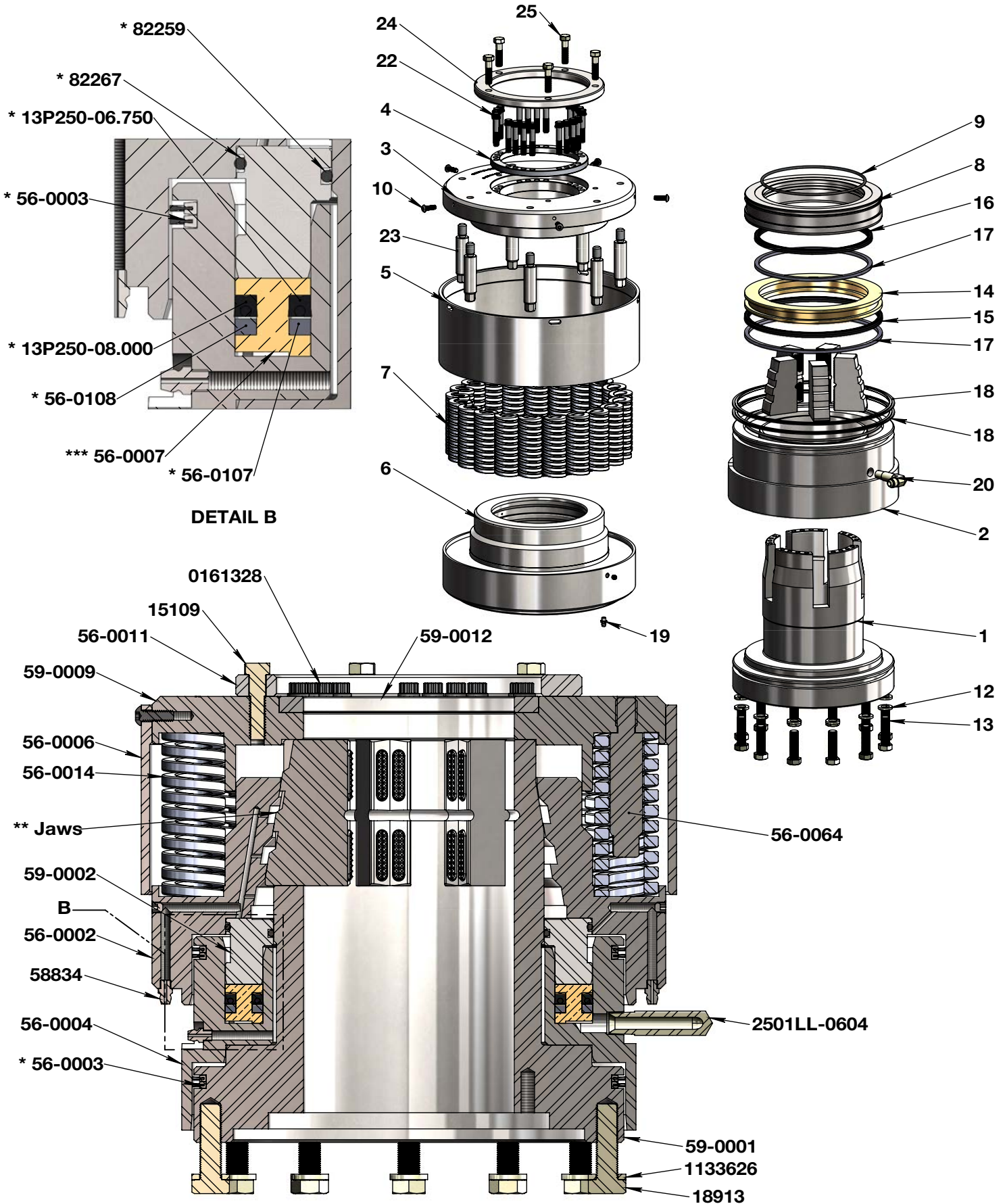
- Spring applied, hydraulic release
- P W/L rod capacity , 4-5/8" inside diameter (117mm)
- Each set uses 5 jaws with 4 carbides each

Specifications

Maximum Inside Diameter	4.625" (117 mm)
Holding Capacity	40,000 Lbs (18,000 Kg)
Weight (Without jaws and bushing)	210 Lbs (95 Kg)



4 CHUCK & ROD CLAMP



XP Rod Clamp

Assembly Kit Order

Item #	Part #	Description	Weight (lbs)
1-27	59-1000	XP Clamp Assembly	202

Parts List

Item #	Part #	Description	Qty	Weight (lbs)
1	13P250-06.750	Inside Seal	1	0.060
2	13P250-08.000	Outside Seal	1	0.071
3	56-0002	Chuck Bowl	1	43.921
4	56-0003	Brush Seal	4	0.160
5	56-0004	Cylinder	1	26.527
6	56-0006	Spring Guard	1	9.665
7	56-0007	Piston, Brass	1	4.022
8	56-0011	Spacer Ring	1	2.811
9	56-0014	Compression Spring	21	0.878
10	56-0064	Spring Guide	7	0.376
11	56-0107	Inside Guide	1	0.043
12	56-0108	Outside Guide	1	0.050
13	59-0001	Base, XP Clamp	1	46.944
14	59-0002	Seal Retainer	1	8.881
15	59-0009	Top Plate, XP Clamp	1	25.113
16	59-0012	Spacer Ring	1	0.835
17	2501LL-0604	90° Extra Long M-JIC #6 / M-NPT #4	1	0.153
18	15109	3/8-16 x 1-1/2" Grade 8 Yellow Zinc Finish Hex Cap Screw	5	0.063
19	18913	1/2-20 x 1-3/4" Grade 8 Yellow Zinc Finish Hex Cap Screw	12	0.133
20	58834	1/4-28 Straight Steel Zinc Self-Tapping Grease fitting	3	0.010
21	82259	O-Ring	1	0.014
22	82267	O Ring	1	0.019
23	94051	1/4-20 x 3/4" Alloy Steel Button Socket Cap Screw	5	0.012
24	94133	1/4" NPTF Steel Socket Head Pipe Plug 3/4" Taper Dryseal	1	0.019
25	141571	1/4-28 x 1/4" Hex Drive Cup Point Alloy Steel Socket Set Screw	2	0.002
26	161328	5/16-24 x 1-3/4" 12 Point Flanged Alloy Steel Ferry Cap Screw	20	0.050
27	1133626	1/2 Zinc Finish Medium Split Lock Washer	12	0.013

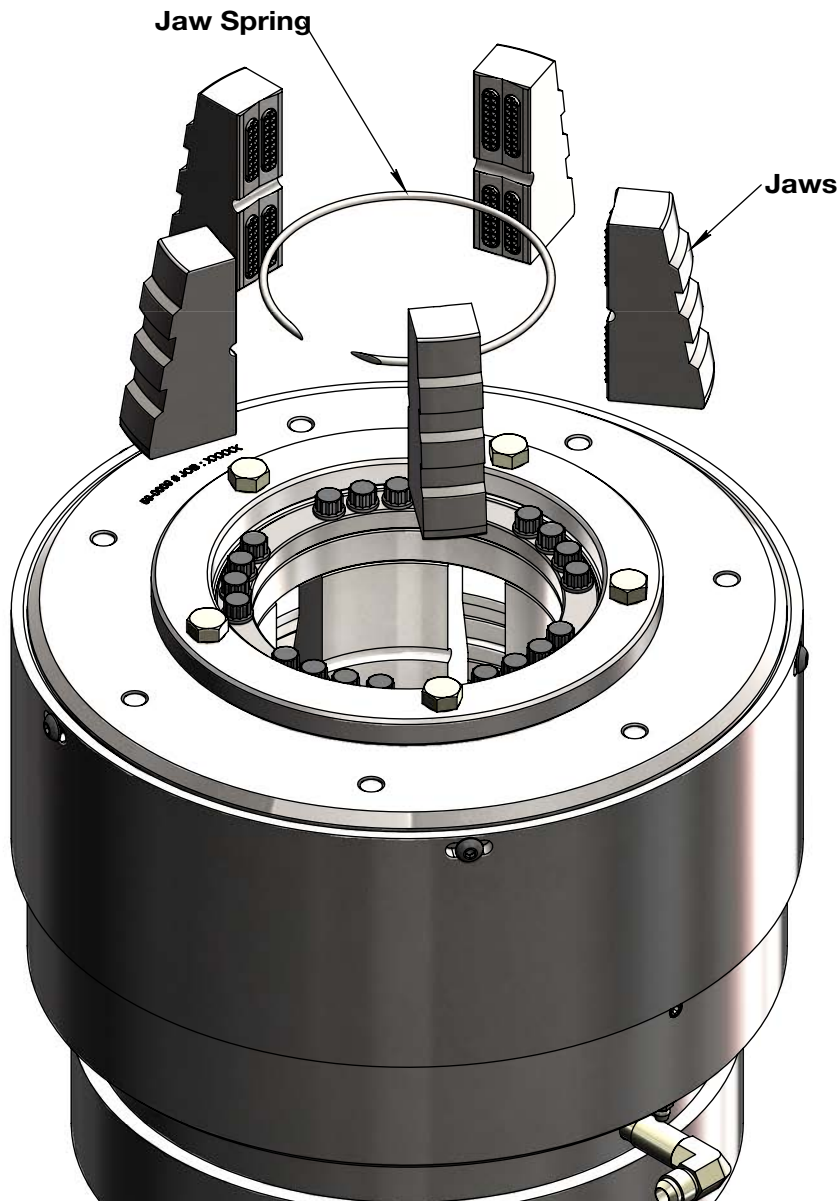
- * Seal Kit #59-0105 includes items marked *
- ** Jaw set includes 5 matched jaws serviced only in sets of 5
- *** Seal Kit #59-0110 includes items marked * and Piston 56-0007

4 CHUCK & ROD CLAMP

Options & Accessories

Jaws & Jaw Springs

SIZE	JAW SET		JAW SPRING	
	X-Spec P/N	Copco P/N	X-Spec P/N	Copco P/N
BW / BWL / BQ ROD / AW CSG	30-20-01	3760007360	56-0040	3760009571
NWL / NQ ROD	30-20-02	3760007361	56-0041	3760009569
BW CSG	30-20-06	3760007362	56-0044	3760009561
HW / HWL / HQ ROD / NW CSG	30-20-03	3760003350	56-0042	3760009572
PWL / PQ ROD / HW CSG	30-20-04	3760007363	56-0043	3760009573



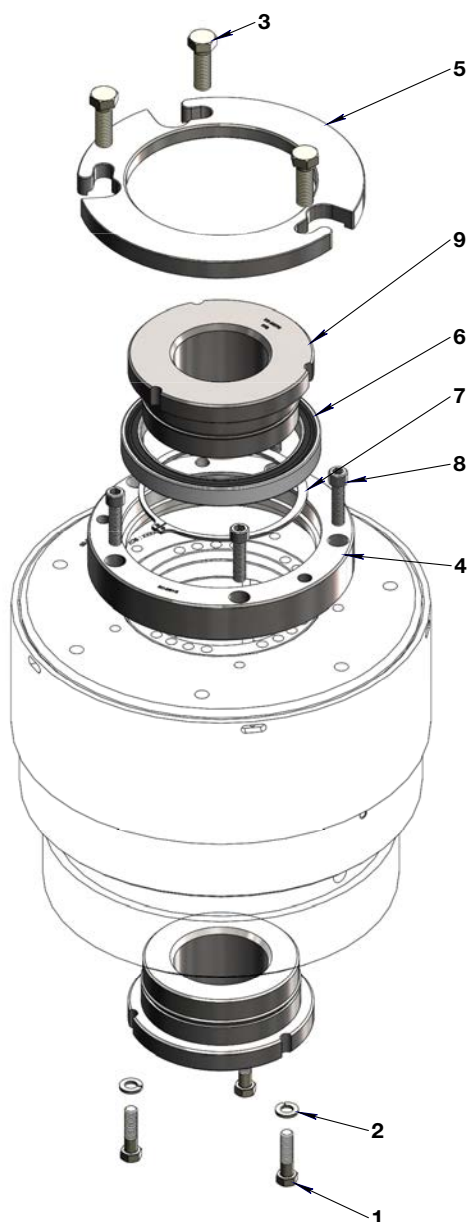


Options & Accessories

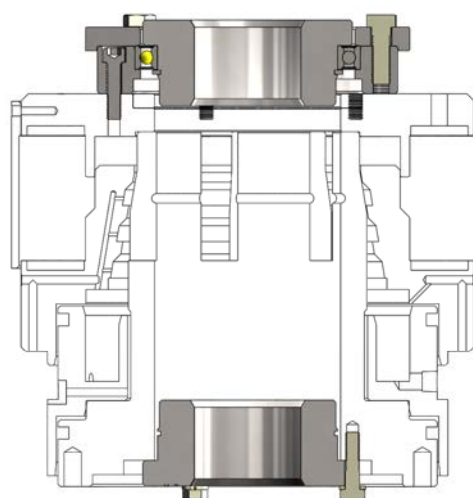
Guide Bushing Assembly Option

Parts List

Item #	Part #	Description	Qty	Weight (lbs)
1	15109	3/8-16 x 1-1/2" Grade 8 Yellow Zinc Finish Hex Cap Screw	3	0.0626
2	1133622	3/8 Zinc Finish Medium Split Lock Washer	3	0.006
3	15209	1/2-13 x 1-1/2" Grade 8 Yellow Zinc Finish Hex Cap Screw	3	0.117
4	59-0015	Bearing Cage	1	7.104
5	59-0016	Top Plate	1	4.089
6	15-6824-2RS	Single Row Ball Bearing	1	1.047
7	045100-0475	External Retaining Ring, N5100-475	1	0.1047
8	23309	3/8-16 x 1-1/2" Hex Drive Alloy Steel Socket Cap Screw	5	0.061
9	See Table	Guide Bushing	2	8.156



Guide Bushing	
Part #	Size
55-0075	B W/L Rod
55-0075-SHL	B W/L Shell
55-0076	N W/L Rod
55-0076-SHL	N W/L Shell
55-0077	H W/L Rod
55-0077-SHL	H W/L Shell
55-0078	P W/L Rod



4 CHUCK & ROD CLAMP

Options & Accessories

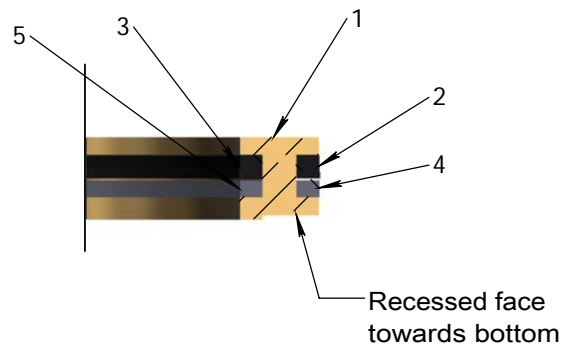
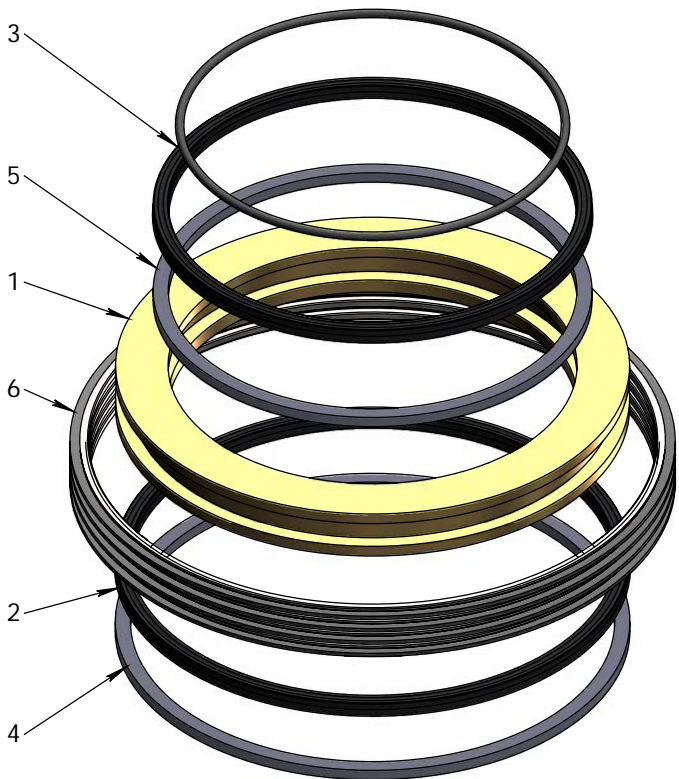
Jaw Spring Tool

Assembly Kit Order

Item #	Part #	Description	Weight (lbs)
1-8	59-0110	Seal Kit, C/W Piston	4.9
2-8	59-0105	Seal Kit	0.6

Parts List

Item #	Part #	Description	Qty	Weight (lbs)
1	56-0007	Piston, Brass	1	4.022
2	13P250-08.000	Outside Seal	1	0.071
3	13P250-06.750	Inside Seal	1	0.06
4	56-0108	Outside Guide	1	0.05
5	56-0107	Inside Guide	1	0.043
6	56-0003	Brush Seal	4	0.16
7	82259	O-Ring	1	0.0142
8	82267	O-Ring	1	0.015



Assembled Piston
Cross-Section

Assembly Notes:

- Install nylon guides into piston (Items 4 & 5) first
- Install seals with the lip pointing towards the part of the piston with a recess
- When installing piston into cylinder 56-0004, (not shown) make sure the recessed face of the piston is pointing towards the bottom of the cylinder

Options & Accessories

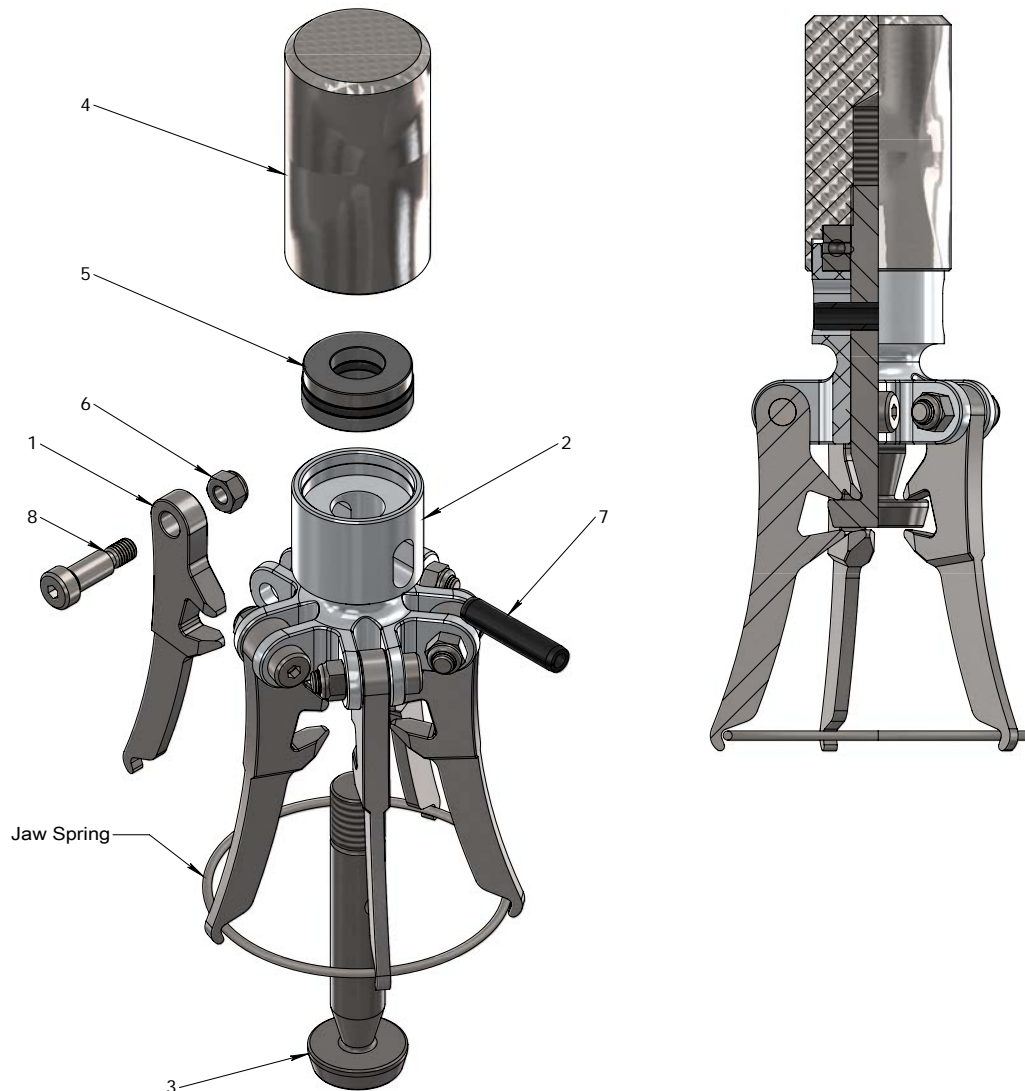
Jaw Spring Tool

Assembly Kit Order

Item #	Part #	Description	Weight (lbs)
1-8	56-0200	Jaw Spring Install Tool	3.813

Parts List

Item #	Part #	Description	Qty	Weight (lbs)
1	56-0201	Tool Leg	5	0.248
2	56-0202	Body	1	0.499
3	56-0203	Plunger	1	0.627
4	56-0204	Knob	1	0.861
5	18298	Thrust Bearing	1	0.2
6	37021	5/16-18 Grade 2 Zinc Finish NE Steel Nylon Insert Lock Nut	5	0.014
7	64313	3/8" x 1-3/4" Plain Finish Steel Slotted Spring Pin	1	0.0346
8	26329	3/8" Shoulder x 3/4" Shoulder Length Steel Socket Shoulder Bolt	5	0.047



4 CHUCK & ROD CLAMP

Options & Accessories

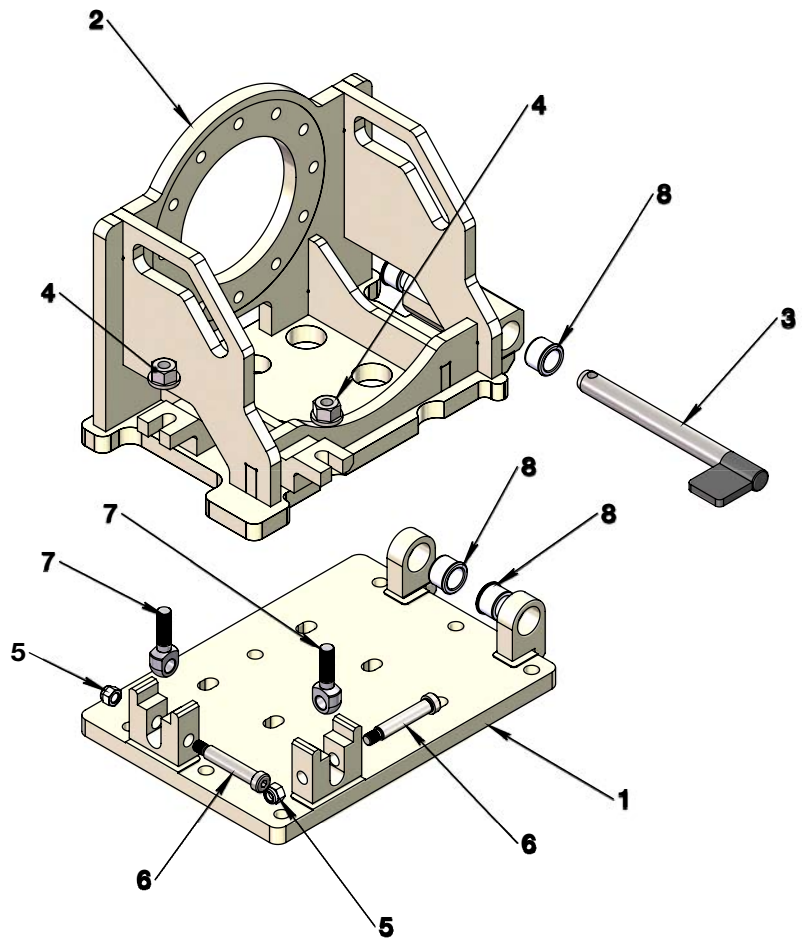
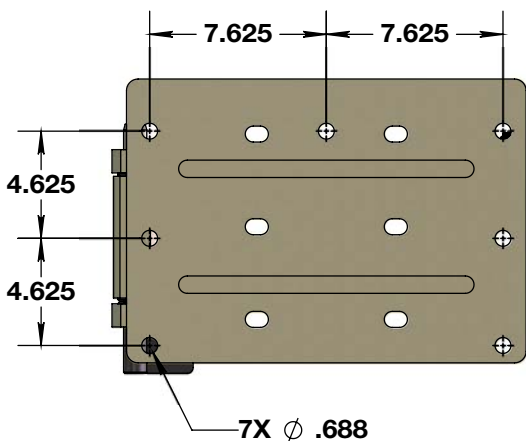
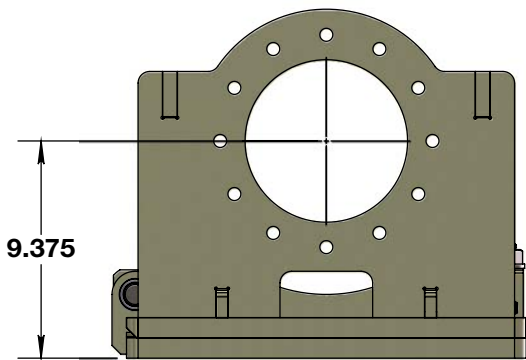
Pivot Base

Assembly Kit Order

Item #	Part #	Description	Weight (lbs)
1-8	59-1500	Pivot Base, XP Clamp	197.7

Parts List

Item #	Part #	Description	Qty	Weight (lbs)
1	59-1505	Fixed Base, XP Clamp	1	54.419
2	59-1510	Mobile Base, XP Clamp	1	137.787
3	59-1515	Pivot Pin	1	2.771
4	400806	Flanged Nut, 5/8-11 UNC	2	0.2
5	37527	1/2-13 Grade 2 Zinc Finish NE Steel Nylon Insert Lock Nut	2	0.05
6	26377	5/8" Shoulder x 3" Shoulder Length x 1/2"-13 Steel Socket Shoulder Bolt	2	0.35
7	12-12-2000	Eye Bolt, 5/8-11 UNC X 2" Lg	2	0.358
8	25-886414	H/T Bushing, Ø1.375" OD X Ø1.000" ID X 0.875" Lg	4	0.201





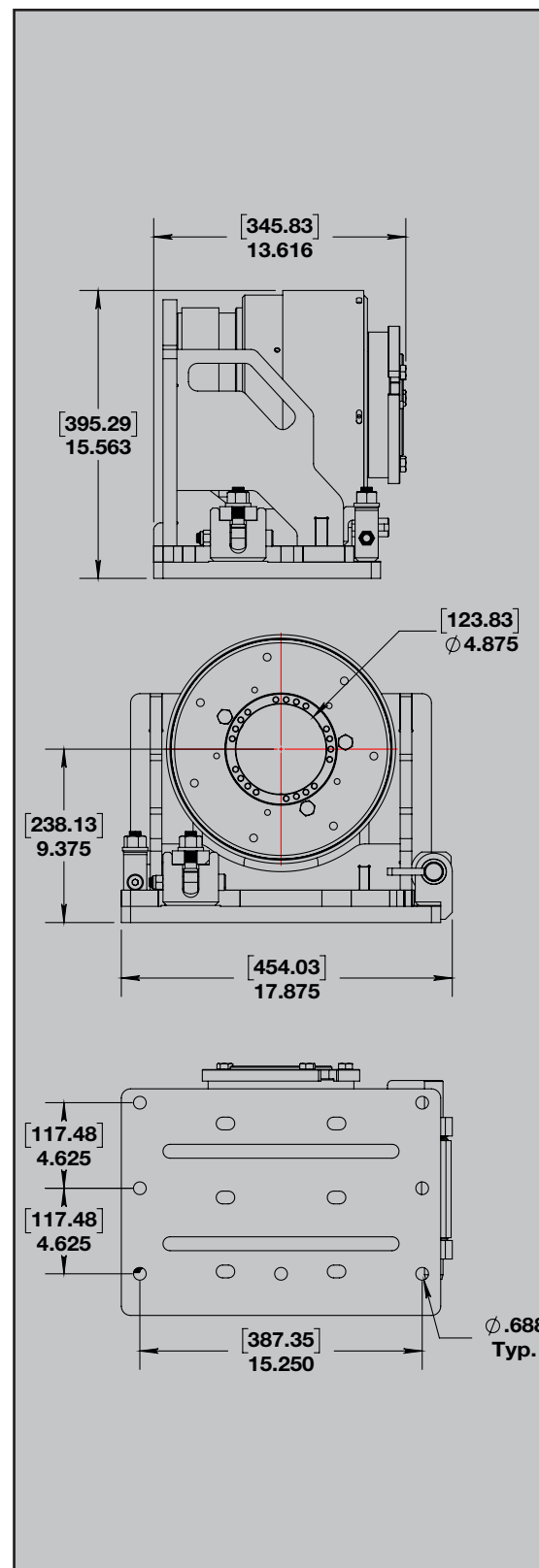
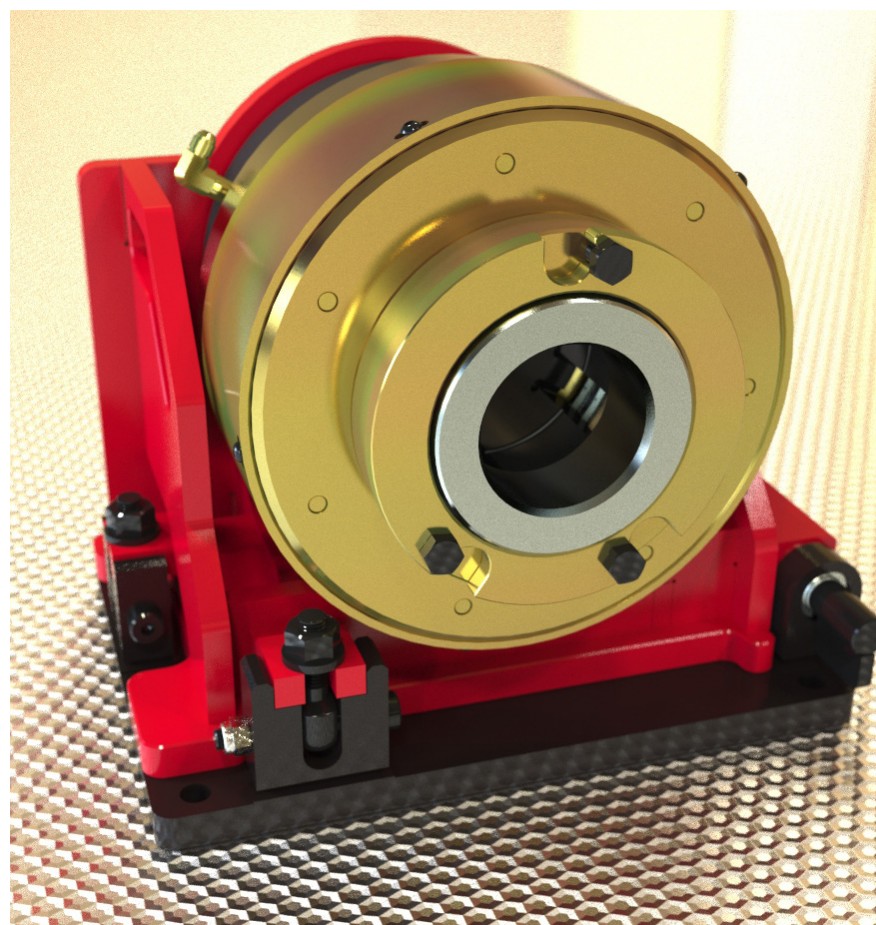
Specifications

Description

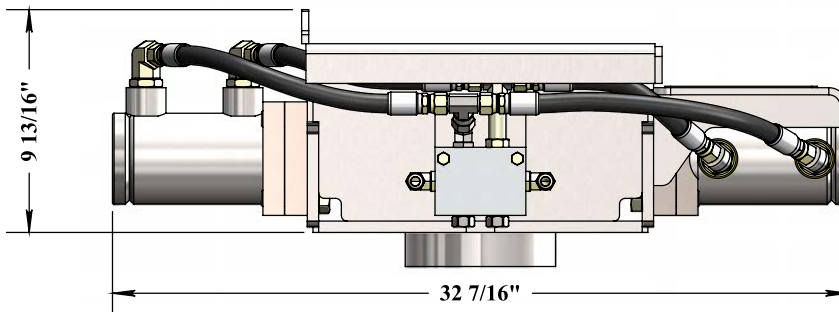
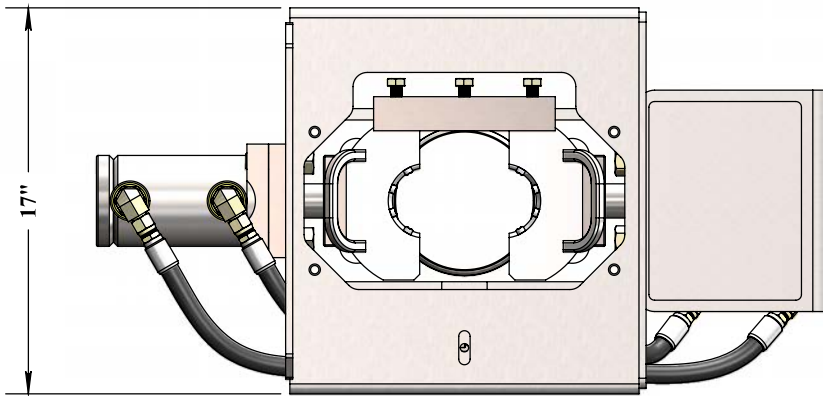
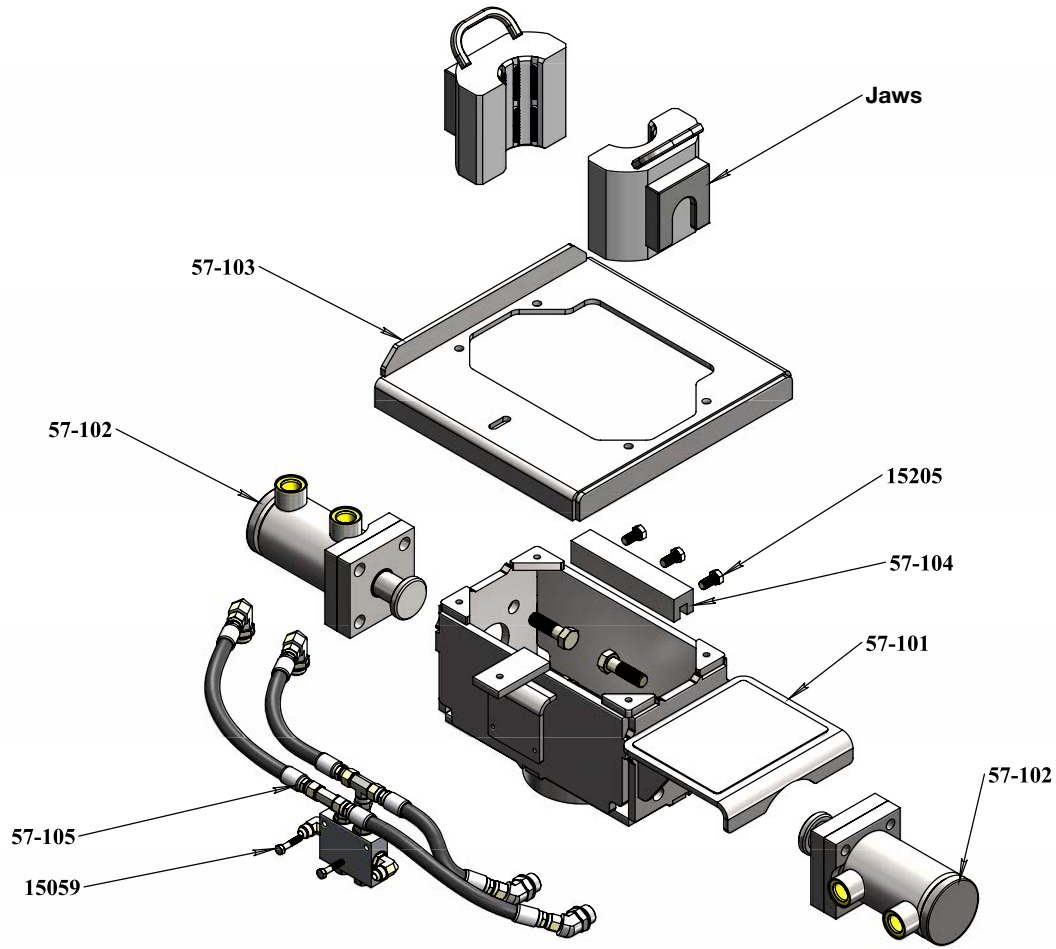
- Spring applied, hydraulic release
- Full P W/L core barrel capacity , 4-7/8" inside Diameter (123mm)
- Rod clamp can pivot out of the way for pw casing
- Bearing guided centering bushing kit available
- Uses same jaws as christensen chuck
- Holding capacity can be increased by the use of a nitrogen booster kit
- Same mounting pattern and center height as the 12HH rod clamp

Specifications

Maximum Inside Diameter	4.875" (123.8)
Holding Capacity	40,000 lbs (18,182 kg)
Weight (Clamp Only)	185 Lbs (84 Kg)
Weight (With Base)	350 Lbs (159 Kg)



4 CHUCK & ROD CLAMP





WR-2000 Rod Clamp

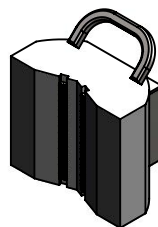
Assembly Kit Order

Item #	Part #	Description	Weight (lbs)
1-8	57-100	WR-2000 Rod Clamp Assembly	231

Parts List

Item #	Part #	Description	Qty	Weight (lbs)
1	57-101	Casing, Rod CLamp	1	67.414
2	57-104	Retaining Block	1	4.123
3	57-102	Rod Clamp Hydraulic Cylinder, 3-1/2" Bore	2	33.007
4	57-103	Guard, Rod Clamp	1	20.405
5	57-105	Lock Valve Kit	1	7.854
6	15205	1/2-13 x 1" Grade 8 Yellow Zinc Finish Hex Cap Screw	3	0.0916
7	15153	7/16-14 x 3/4" Grade 8 Yellow Zinc Finish Hex Cap Screw	5	0.0563
8	15059	5/16-18 x 1-1/2" Grade 8 Yellow Zinc Finish Hex Cap Screw	2	0.0436

Jaw Set	
Size	Part #
A W/L	30-40-00
B W/L	30-40-01
N W/L	30-40-02
H W/L / NW CSG	30-40-03
BW CSG	30-40-06
P W/L / HW CSG	30-40-04
S W/L / PW CSG	30-40-07
Universal (A W/L to P W/L)	30-40-05



Universal Jaws

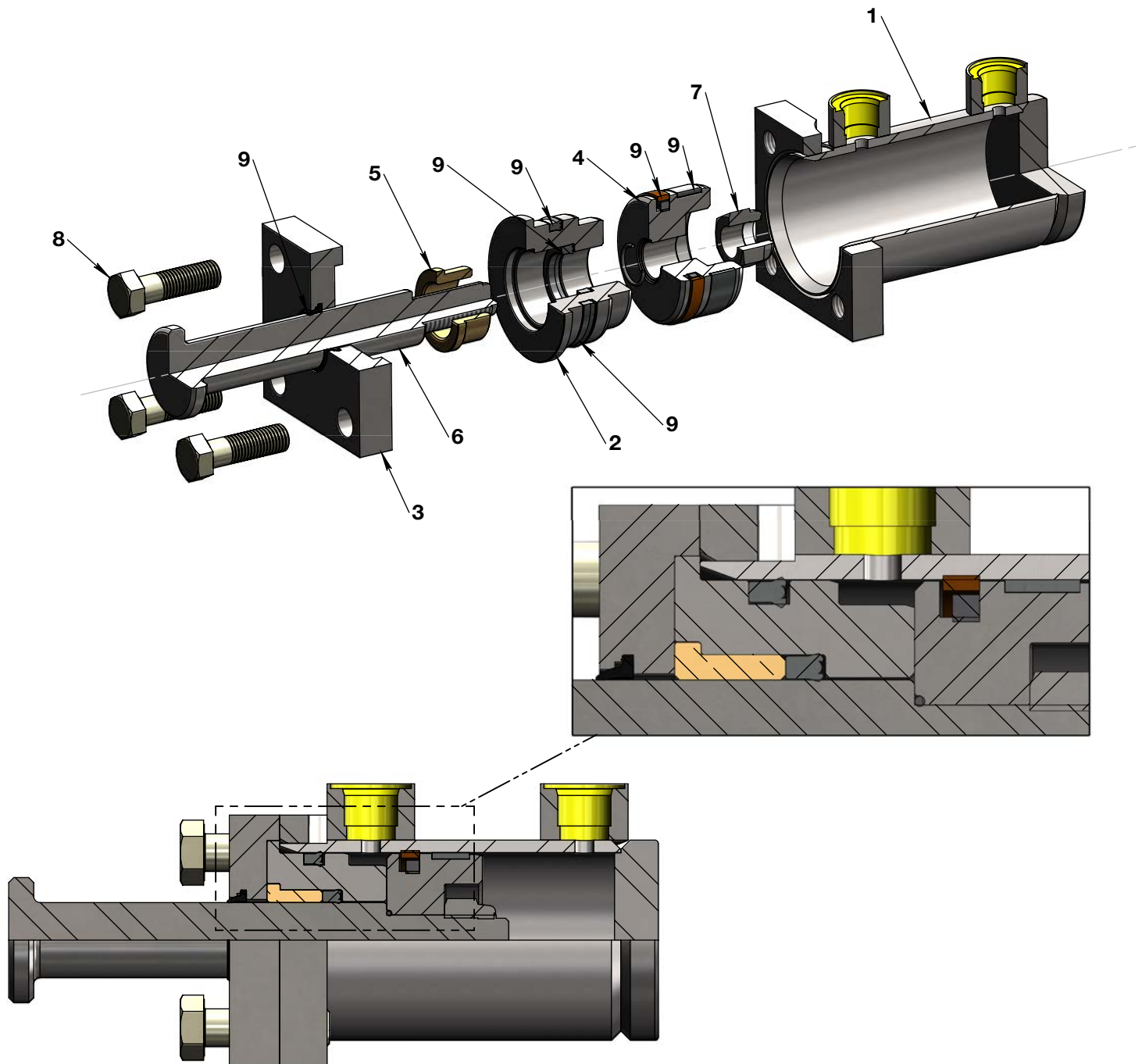


Standard Jaws

4 CHUCK & ROD CLAMP

Options & Accessories

Hydraulic Cylinder



Options & Accessories

Hydraulic Cylinder

Assembly Kit Order

Item #	Part #	Description	Weight (lbs)
1-9	57-102	Rod Holder Hydraulic Cylinder, 3-1/2" Bore	33

Parts List

Item #	Part #	Description	Qty	Weight (lbs)
1	A4988	Cylinder Body, Rod Holder	1	12.366
2	A4961	Cylinder Head, Rod Holder	1	3.992
3	A3993	Front Cover, Rod Holder Cylinder	1	5.149
4	A4960	Piston, Rod Holder Cylinder	1	3.308
5	A4959	Bushing, Rod Holder Cylinder	1	0.556
6	C3649	Rod, Rod Holder Cylinder	1	4.746
7	37089	1-14 Grade 8 Yellow Zinc Finish NE Steel Nylon Insert Lock Nut	1	0.312
8	15363	3/4-10 x 2-1/2" Grade 8 Yellow Zinc Finish Hex Cap Screw	4	0.4331
9	YSR-3500-1	Seal Kit, Rod Holder Ø3-1/2"	1	0.846

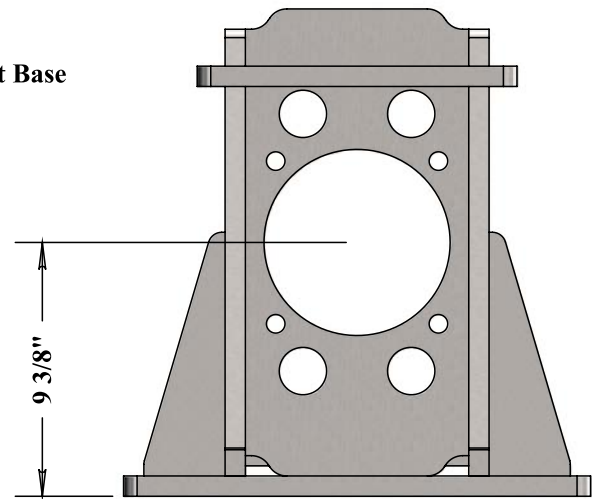
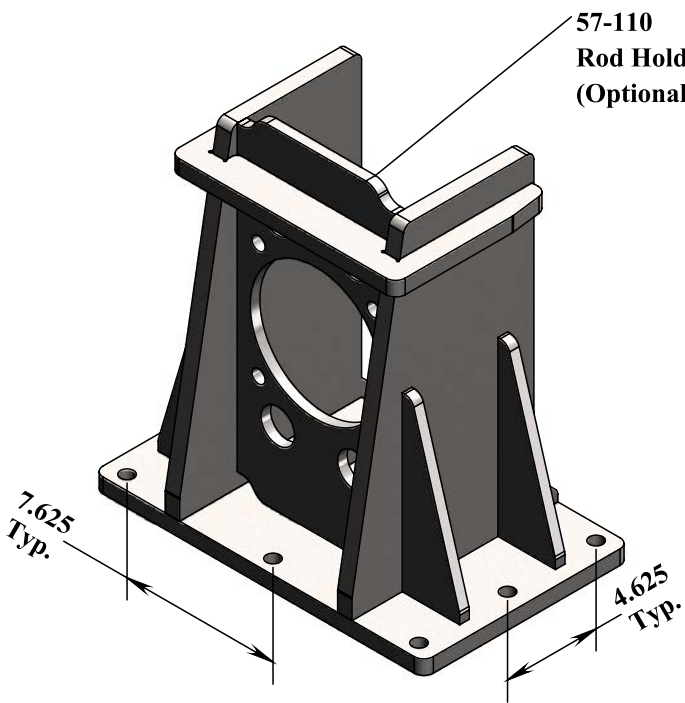
4 CHUCK & ROD CLAMP

Options & Accessories

Support Base

Assembly Kit Order

Item #	Part #	Description	Weight (lbs)
1	57-110	WR-2000 Rod Clamp Support Base	117





Specifications

Description

- Hydraulically applied, hydraulically released
- Full P W/L core barrel capacity , 4-7/8" inside Diameter (123mm)
- Same mounting pattern and center height as the 12HH rod clamp
- Holding Capacity: 500m NQ rods with Universal jaws
- Maximum pressure adjustment: 1500 psi for Universal jaws
- Holding Capacity: 2500m NQ rods with Standard jaws
- Maximum pressure adjustment: 4500 psi for Standard jaws

Specifications

Maximum Inside Diameter	4.875" (123.8)
Weight (Clamp Only)	185 Lbs (84 Kg)
Weight (With Base)	350 Lbs (159 Kg)

