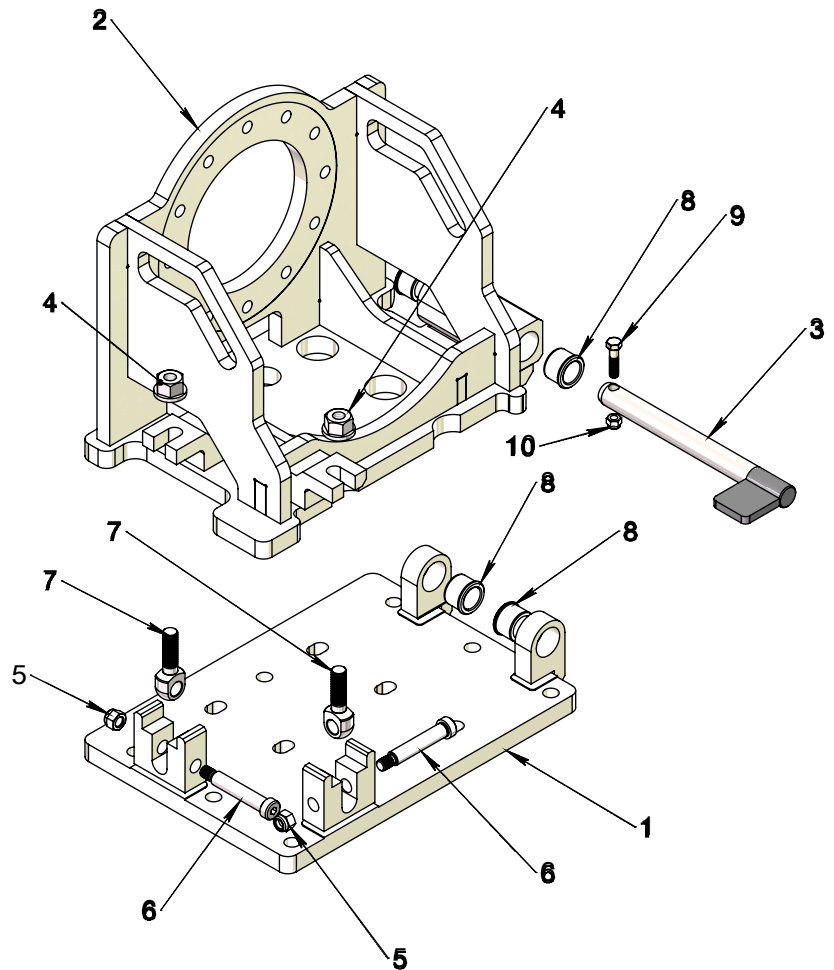
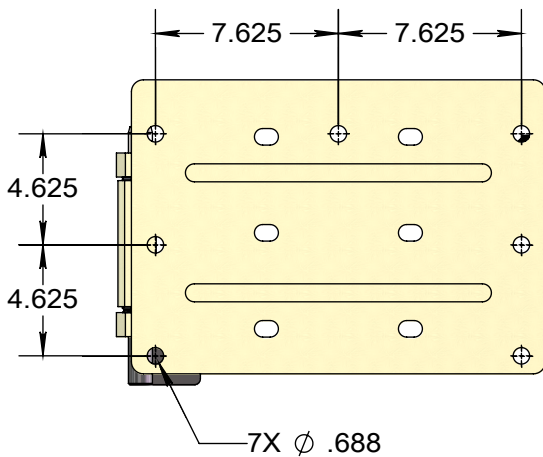
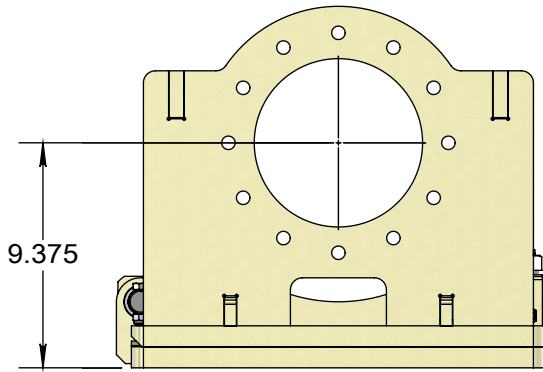


Item #	Part #	Description	Unit Weight
1-8	59-1500	Pivot Base, XP Clamp	162.106

Item #	Part Number	Description	Qty	Unit Weight
1	59-1505	Fixed Base, XP Clamp	1	54.398
2	59-1510	Mobile Base, XP Clamp	1	102.131
3	59-1515	Pivot Pin	1	2.771
4	400806	Flanged Nut, 5/8-11 UNC	2	0.20
5	37527	1/2-13 Grade 2 Zinc Finish NE Steel Nylon Insert Lock Nut	2	0.050
6	26377	5/8" Shoulder x 3" Shoulder Length x 1/2"-13 Black Oxide Alloy Steel Socket Shoulder Bolt	2	0.350
7	12-12-2000	Eye Bolt, 5/8-11 UNC X 2" Lg	2	0.360
8	25-886414	H/T Bushing, Ø1.375" OD X Ø1.000" ID X 0.875" Lg	4	0.201
9	15109	3/8-16 x 1-1/2" Grade 8 Yellow Zinc Finish Hex Cap Screw	1	0.0626
10	37024	3/8-16 Grade 2 Zinc Finish NE Steel Nylon Insert Lock Nut	1	0.022



This document and all information contained are the sole property of Usage X-Spec Inc. Any reproduction in part or as a whole without the permission of Usage X-Spec Inc. is prohibited

www.xspec.ca



Project: 059A - BASE ROD CLAMP XP

Description: Pivot Base, XP Clamp

59-1500

Weight: 162.106 lbs

Version: 2020-10-19

Filename: C3824.sldrw