

This document and all information contained  
are the sole property of Usage X-Spec Inc.  
Any reproduction in part or as a whole without the  
permission of Usage X-Spec Inc. is prohibited



www.xspec.ca

Project: 999M - ROD CLAMP WR-2000	
Description: Rod Holder, WR-2000	
Weight	Version
262.701 lbs	2024-04-13
Filename: B9042.slddrw	

57-100

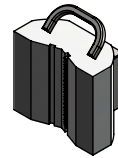
Item #	Part #	Description	Unit Weight
1-8	57-100	Rod Holder, WR-2000	262.701

Item #	Part #	Description	Qty	Unit Weight
1	57-101	Casing, Rod Holder	1	65.333
2	57-104	Retaining Block	1	4.123
3	57-102	Rod Holder Hydraulic Cylinder, 3-1/2" Bore	2	32.980
4	57-103	Guard, Rod Holder	1	21.325
5	57-105	Lock Valve Kit	1	7.854
6	15205	1/2-13 x 1" Grade 8 Yellow Zinc Finish Hex Cap Screw	3	0.0916
7	15059	5/16-18 x 1-1/2" Grade 8 Yellow Zinc Finish Hex Cap Screw	2	0.0436
8	57-200	Guide Bushing Assembly	1	29.522
9	15210	1/2-13 x 1-3/4" Grade 8 Yellow Zinc Finish Hex Cap Screw	4	0.1309

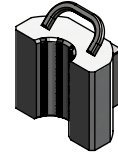
Size	Jaw Set P/N
A W/L	30-40-00
B W/L	30-40-01
N W/L	30-40-02
H W/L / NW CSG	30-40-03
BW CSG	30-40-06
P W/L / HW CSG	30-40-04
S W/L / PW CSG	30-40-07
Universal (A W/L to P W/L)	30-40-05

**Specifications:**

- Holding Capacity: 500m NQ rods with Universal jaws
- Maximum pressure adjustment: 1500 psi for Universal jaws
- Holding Capacity: 2500m NQ rods with Standard jaws
- Maximum pressure adjustment: 4500 psi for Standard jaws

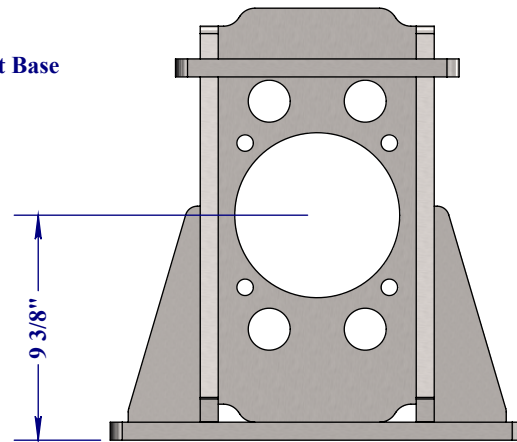
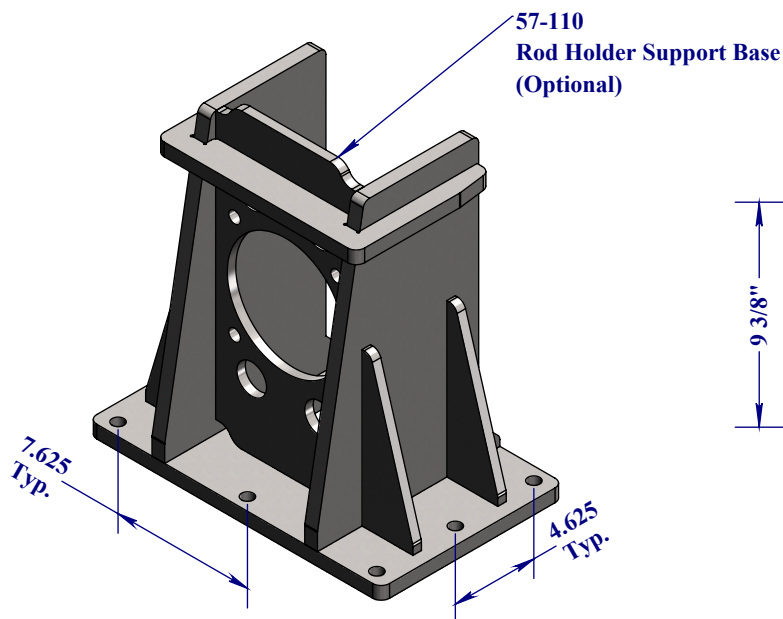


Universal Jaws




Standard Jaws

Item #	Part #	Description	Unit Weight
1	57-110	Rod Holder Support Base	114.035



Same center height  
and bolt pattern as  
55-4000 Rod holder base

<small>This document and all information contained are the sole property of Usage X-Spec Inc. Any reproduction in part or as a whole without the permission of Usage X-Spec Inc. is prohibited</small> <a href="http://www.xspec.ca">www.xspec.ca</a> 	Project: 999M - ROD CLAMP WR-2000	
	Description: <b>Rod Holder Support Base</b>	
	Weight <b>114.035 lbs</b>	Version 2024-04-13
	Filename: B9042.slddrw	

57-110