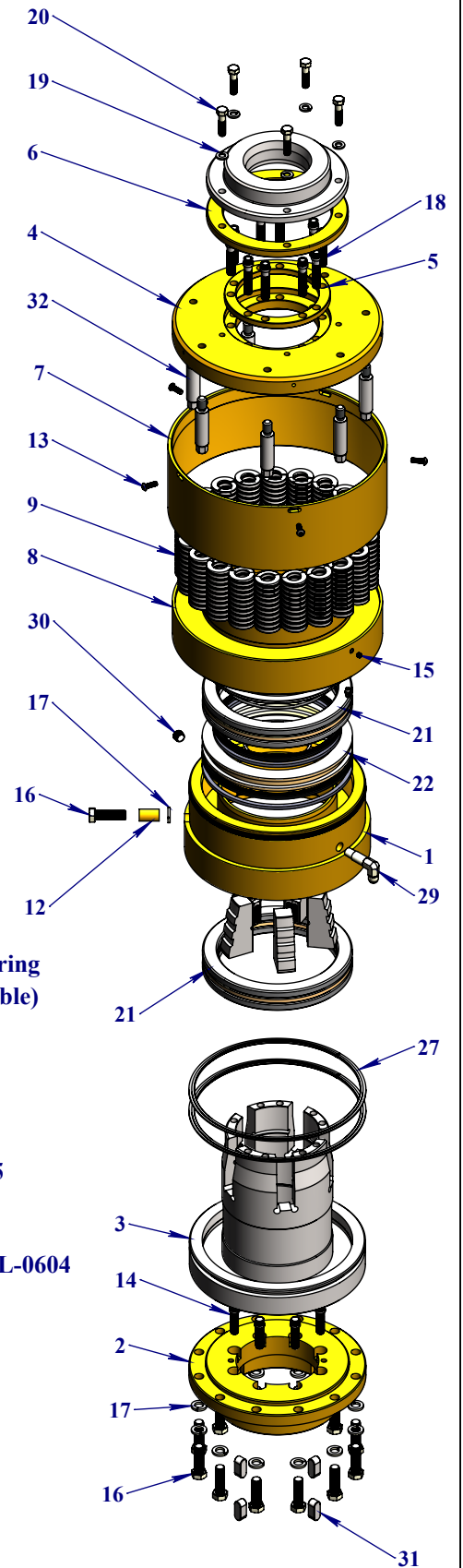
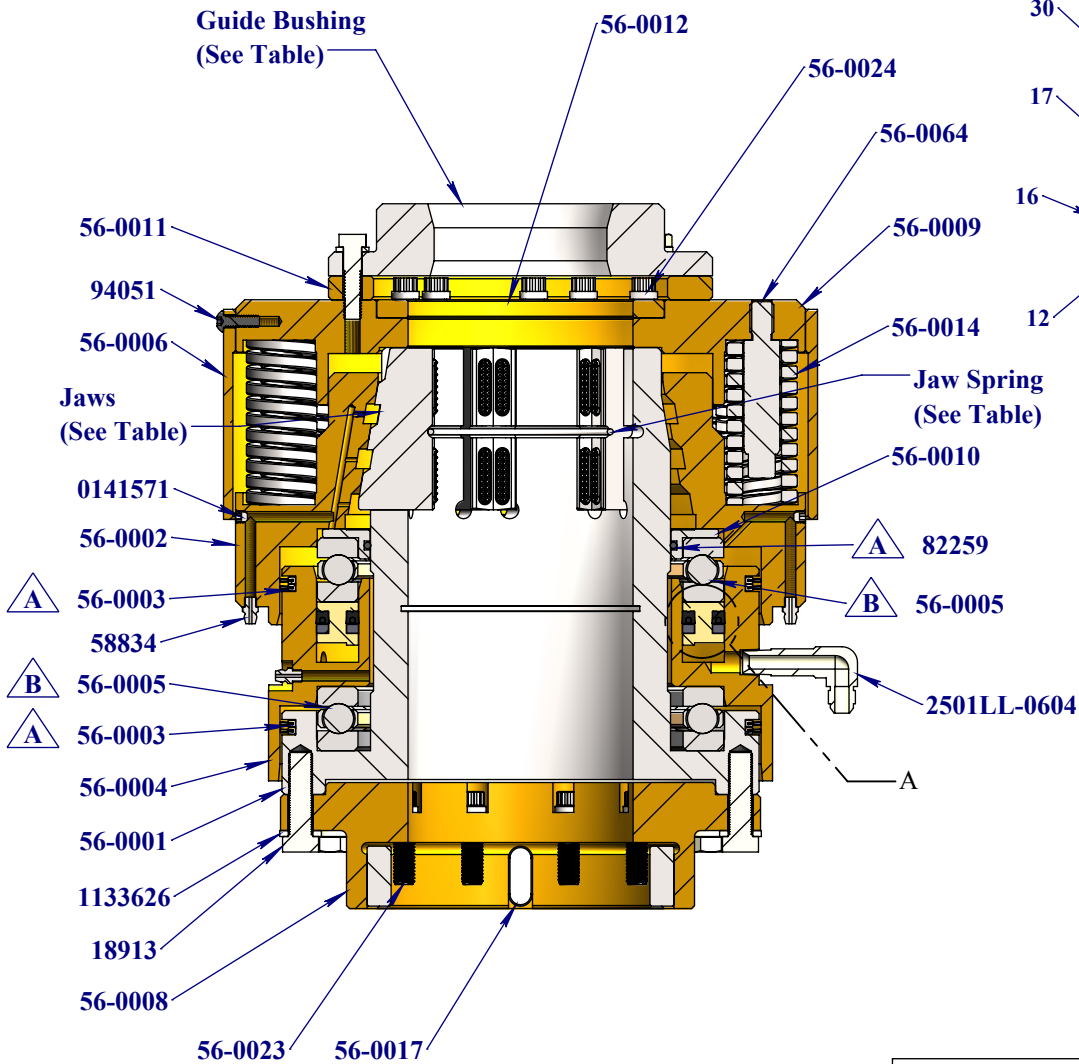



DETAIL A




<p>This document and all information contained are the sole property of Usage X-Spec Inc. Any reproduction in part or as a whole without the permission of Usage X-Spec Inc. is prohibited</p> <p>www.xspec.ca</p> 	<p>Project: 056 - CHUCK CHRISTENSEN</p>	
	<p>Description: 4-5/8" Chuck Assembly (Christensen)</p>	
<p>Weight</p>	<p>233.692 lbs</p>	<p>Version</p>
<p>Filename: C6294.slddrw</p>	<p>56-1000</p>	<p>2019-05-04</p>

Item #	Part Number	Description	Atlas Copco #	Old Atlas Copco #	Unit Weight
1-32	56-1000	4-5/8" Chuck Assembly (Christensen)	3760003223	025295-1	234

Item #	Part #	Description	Qty	Atlas Copco #	Old Atlas Copco #
1	56-0004	Cylinder	1	3760003343	164287-0
2	56-0008	Adapter plate	1	3760003342	164281-0
3	56-0001	Chuck Base	1	3760003341	164280-0
4	56-0009	Top Plate	1	3760003316	162313-0
5	56-0012	Spacer	1	3760009557	150035-518
6	56-0011	Spacer Ring	1	3760007319	150035-456
7	56-0006	Spring Guard	1	3760003345	164375-0
8	56-0002	Chuck Bowl	1	3760003313	160943-0
9	56-0014	Compression Spring	21	3760007187	150079-101
10	56-0010	Seal Retainer	1	3760003315	162311-0
11	82259	O-Ring	1	3760007185	090108-259
12	56-0013	Spacer Tube	1		164281-1
13	94051	1/4-20 x 3/4" ASTM F835 Hex Drive Zinc Finish Alloy Steel Button Socket Cap Screw	5	3760007318	091289-3
14	56-0023	Special Bolt, Short	8	3760003308	154397-17
15	0141571	1/4-28 x 1/4" Hex Drive Cup Point Zinc Finish Alloy Steel Socket Set Screw	2		090406-16
16	18913	1/2-20 x 1-3/4" Grade 8 Yellow Zinc Finish Hex Cap Screw	13	0144400207	090214-172
17	1133626	1/2 Zinc Finish Medium Split Lock Washer	13	5530702800	5180508
18	56-0024	Special Bolt, Long	10	3760003309	154397-18
19	1133622	3/8 Zinc Finish Medium Split Lock Washer	5	5530702900	5180506
20	15109	3/8-16 x 1-1/2" Grade 8 Yellow Zinc Finish Hex Cap Screw	5	5530702900	5113003
21	56-0005	Ball Thrust Bearing, Christensen Chuck	2	3760007186	090000-2
22	56-0007	Piston, Brass	1		
23	13P250-08.000	Outside Seal	1		
24	13P250-06.750	Inside Seal	1		
25	56-0108	Outside Guide	1		
26	56-0107	Inside Guide	1		
27	56-0003	Brush Seal	4	3760007320	150045-148
28	58834	1/4-28 Straight Steel Zinc Self-Tapping Grease fitting With Ball Check	3	0544110007	5200812
29	2501LL-0604	90° Extra Long M-JIC #6 / M-NPT #4	1	0570509033	090740-32
30	94133	1/4" NPTF Steel Socket Head Pipe Plug 3/4" Taper Dryseal	1	0686311522	5200128
31	56-0017	Key	4	0337000970	090204-46
32	56-0064	Spring Guide	7		

SIZE	JAW SET		GUIDE BUSHING		JAW SPRING	
	X-Spec P/N	Copco P/N	X-Spec P/N	Copco P/N	X-Spec P/N	Copco P/N
BQ ROD	30-20-01	3760007360	56-0020	3760007354	56-0040	3760009571
NQ ROD	30-20-02	3760007361	56-0021	3760007355	56-0041	3760009569
BW CSG	30-20-06	3760007362	56-0037	3760007356	56-0044	3760009561
HQ ROD	30-20-03	3760003350	56-0022	3760003317	56-0042	3760009572
PQ ROD	30-20-04	3760007363	56-0036	3760007358	56-0043	3760009573

- A** SERVICED IN SEAL KIT #56-0105
- B** PACK WITH GREASE BEFORE INSTALLING IN CHUCK ASSEMBLY
- C** JAW SET INCLUDES 5 MATCHED JAWS SERVICED ONLY IN SETS OF 5
- D** SEAL KIT # 56-0110 INCLUDES PISTON 56-0007

<small>This document and all information contained are the sole property of Usage X-Spec Inc. Any reproduction in part or as a whole without the permission of Usage X-Spec Inc. is prohibited</small> 	Project: 056 - CHUCK CHRISTENSEN	
	Description: 4-5/8" Chuck Assembly (Christensen)	
	Weight 233.692 lbs	Version 2019-05-04
	Filename: C6294.slddrw	