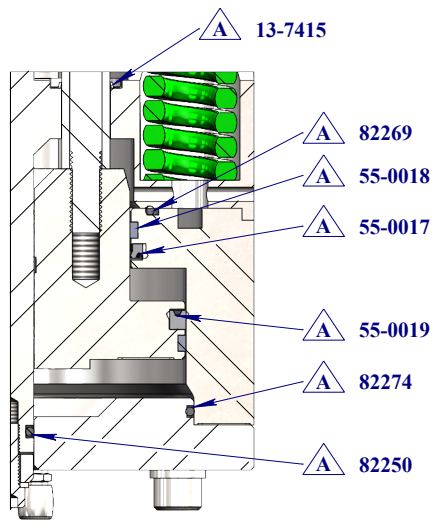
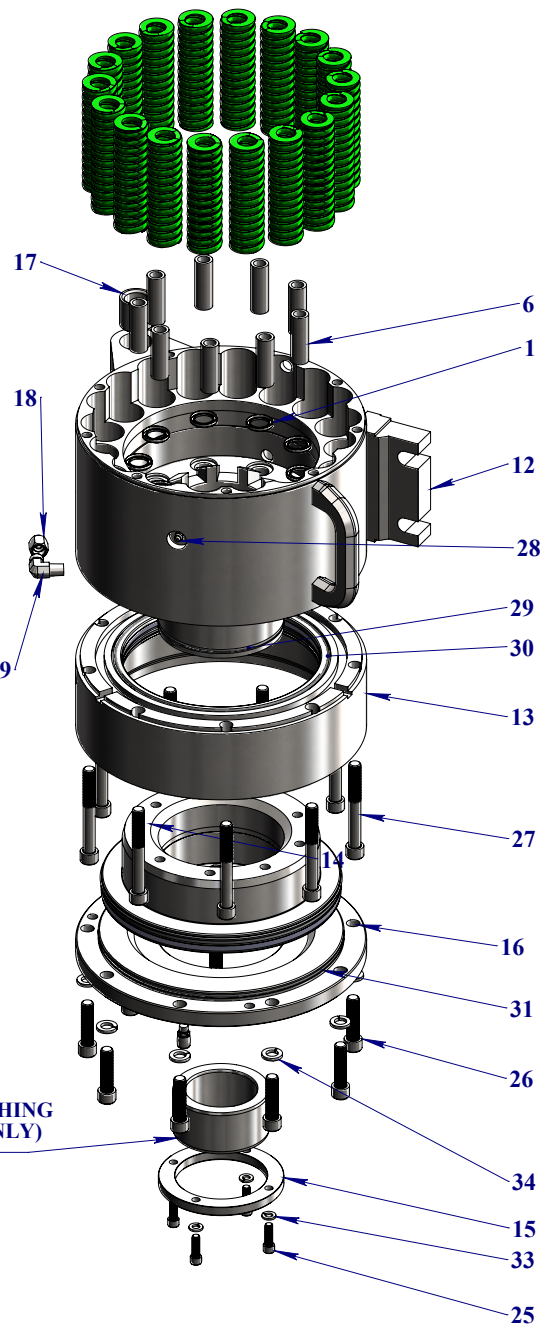
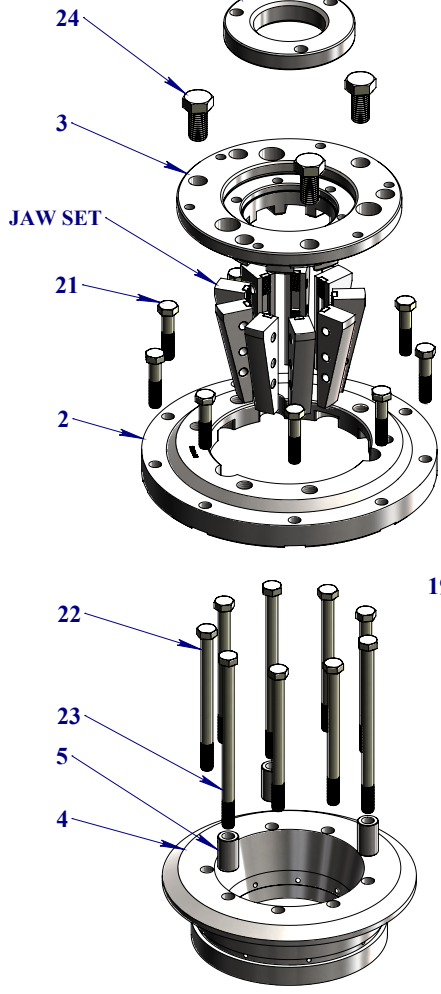


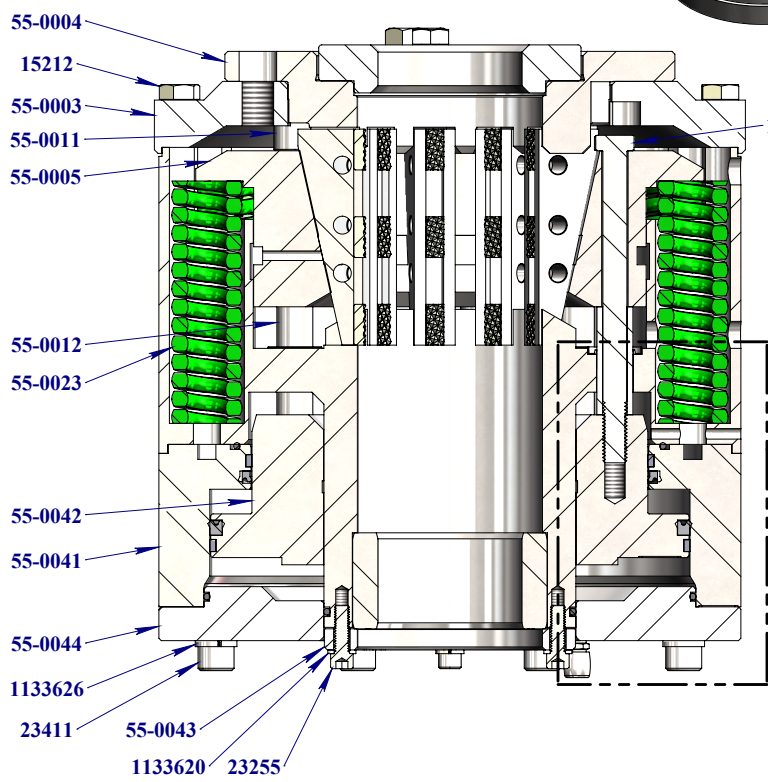
**CHUCK BUSHING  
(DRILLHEAD & CLAMP)  
(A)**




**DETAIL A  
SCALE 1 : 3**



**CLAMP BUSHING  
(CLAMP ONLY)  
(B)**



<p>This document and all information contained are the sole property of Usage X-Spec Inc. Any reproduction in part or as a whole without the permission of Usage X-Spec Inc. is prohibited</p> <p>www.xspec.ca</p> 	<b>Project:</b>	
	<b>Description:</b>	
	<b>55-1500 12HH Rod Clamp Assembly</b>	
	55-1500	
<b>Weight</b>	<b>285.555 lbs</b>	<b>Version</b>
		2019-04-30
<b>Filename:</b> B1686.sldrw		

Item #	Part #	Description	Atlas Copco Interchange	Mirow Interchange
1-34	55-1500	12HH Rod Clamp Assembly	2920456	18120002

Item #	Part #	Description	Qty	Atlas Copco #	Mirow #
1	13-7415	Oil Seal	9	5040192	18100156
2	55-0003	Top Cap Holder (6 Holes)	1	3506906	18100122
3	55-0004	Top Cap Adapter	1	3506907	18100071
4	55-0005	Chuck Bowl, 12.5 Deg	1	2920390	18100067
5	55-0011	Top Spacer	3	3506878	18100058
6	55-0012	Bottom Spacer	9	3506880	18100059
7	55-0017	U Cup Seal, Ø8-1/4"	1	5035016	18100062
8	55-0018	Wear Ring, Ø8-1/4"	1	5035018	18100063
9	55-0019	U Cup Seal, Ø10"	1	5035015	18100061
10	55-0020	Wear Ring, Ø10"	1	5035017	18100064
11	55-0023	Compression Spring	18	5200517	18100155
12	55-0040	Clamp Housing	1	2920455	18100070
13	55-0041	Clamp Cylinder	1	2920332	18100052
14	55-0042	Clamp Piston	1	2920331	18100051
15	55-0043	Bushing Retainer	1	2920452	18100069
16	55-0044	Cylinder Cap	1	2920333	18100066
17	55-0045	Housing Bushing	2	5020126	18100336
18	0304C-06	Female JIC Flare Cap, #6	1		
19	2501-0604	90° M-JIC #6 / M-NPT #4	1	5290662	
20	15209	1/2-13 x 1-1/2" Grade 8 Yellow Zinc Finish Hex Cap Screw	3	5115003	HHCS120131125
21	15212	1/2-13 x 2-1/4" Grade 8 Yellow Zinc Finish Hex Cap Screw	9	5115303	HHCS120132145
22	15226	1/2-13 x 6-1/2" Grade 8 Yellow Zinc Finish Hex Cap Screw	6	5125503	HHCS120136125
23	15229	1/2-13 x 8" Grade 8 Yellow Zinc Finish Hex Cap Screw	3	5125803	HHCS120138005
24	15359	3/4-10 x 1-1/2" Grade 8 Yellow Zinc Finish Hex Cap Screw	3	5119006	HHCS340101125
25	23255	5/16-18 x 1" ASTM A574 Hex Drive Black Oxide Finish Alloy Steel Socket Cap Screw	4	5102616	SHCSS1618100
26	23411	1/2-13 x 2" ASTM A574 Hex Drive Black Oxide Finish Alloy Steel Socket Cap Screw	9	5115216	SHCS12013200
27	23419	1/2-13 x 4" ASTM A574 Hex Drive Black Oxide Finish Alloy Steel Socket Cap Screw	9	5125016	SHCS12013400
28	58834	1/4-28 Straight Steel Zinc Self-Tapping Grease fitting With Ball Check	1	5200812	GF14028S
29	82250	O-Ring	1	5030250	18100189
30	82269	O-Ring	1	5030269	18100191
31	82274	O-Ring	1	5030274	18100192
32	300805	Air Breather, 1/8 NPT	1	7500346	18100173
33	1133620	5/16 Zinc Finish Medium Split Lock Washer	4	5180405	
34	1133626	1/2 Zinc Finish Medium Split Lock Washer	9		WASHERLKHC12B

SIZE	Jaw Set			Chuck Bushing			Clamp Bushing		
	X-Spec P/N	Copco P/N	Mirow P/N	X-Spec P/N	Copco P/N	Mirow P/N	X-Spec P/N	Copco P/N	Mirow P/N
JKT/AW/AQ ROD EW CSG	30-16-00	2920391	N/A	55-0046	2920401	N/A	55-0050	2920459	
BW/BWL/BQ ROD AW CSG	30-16-01	2920392	18100012	55-0047	2920402 3506864	18100068	55-0051	2920460	18100203
NWL/NQ ROD	30-16-02	2920394	18100135	55-0048	2920404 3506867	18100153	55-0052	2920454	18100205
BW CSG	30-16-06	2920395	18100134	55-0049	2920405 3506868	18100206	55-0053	2920462	18100204
HW/HWL/HQ ROD / NW CSG	30-16-03	2920396	18100145	55-0059	N/A	N/A	55-0054	2920453	18100383

**A** SEAL KIT #55-0058 INCLUDES ITEMS MARKED **A**

**B** JAW SET INCLUDES 9 MATCHED JAWS SERVICED ONLY IN SETS OF 9

This document and all information contained are the sole property of Usage X-Spec Inc. Any reproduction in part or as a whole without the permission of Usage X-Spec Inc. is prohibited

www.xspec.ca



Project:

Description: **55-1500  
12HH Rod Clamp Assembly**

55-1500

Weight: **285.555 lbs**

Version: **2019-04-30**

Filename: B1686.slddrw