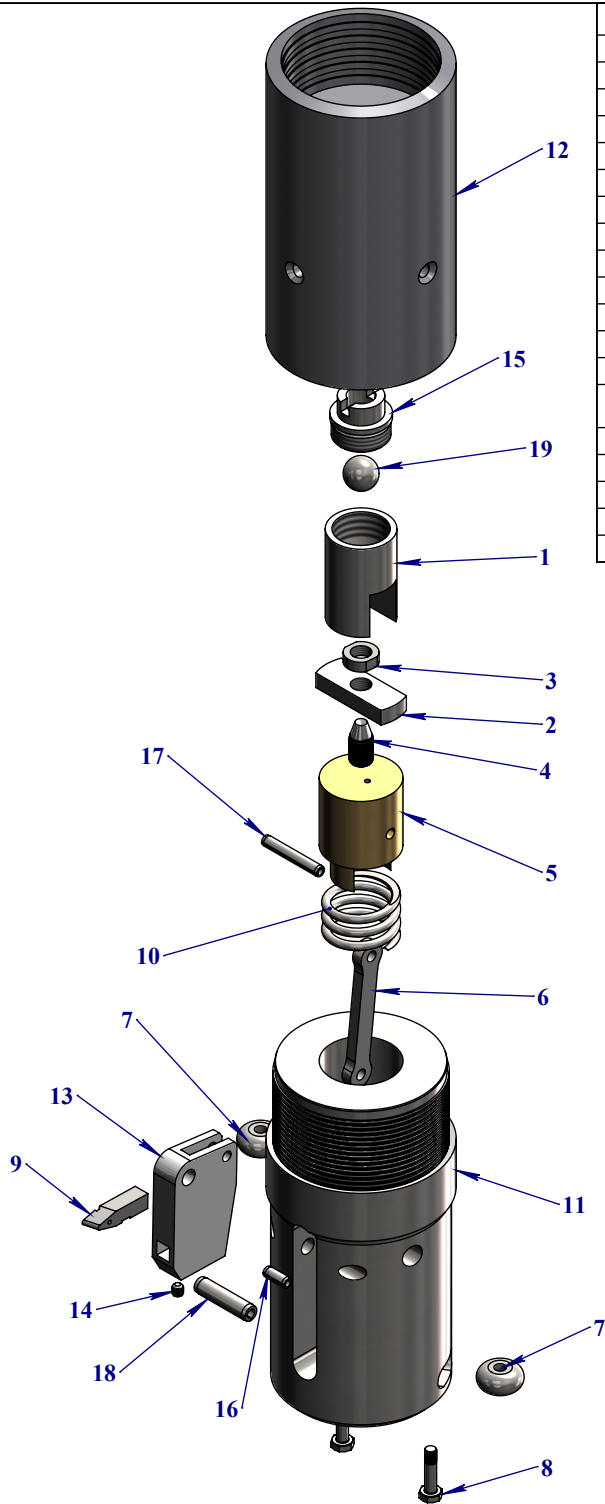
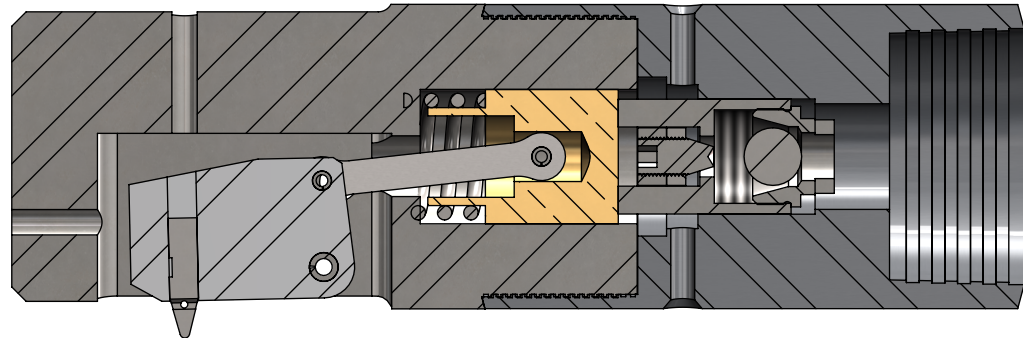


# ITEM	QTY	PART #	DESCRIPTION	REPLACES
1	1	44-40-103	Valve	29-30-314
2	1	44-40-106	Stopper Base	29-30-317A
3	1	44-40-107	Stopper Lock Nut	29-30-317C
4	1	44-40-108	Stopper Screw	29-30-317B
5	1	44-40-109	Piston	29-30-311
6	1	44-40-110	Piston Rod	29-30-309
7	2	44-40-112	Roller Stabilizer	29-30-302
8	2	44-40-113	Roller Screw	29-30-301
9	1	44-40-117	Cutter Knife (Carbide)	29-30-307
10	1	44-40-119	Compression Spring	29-30-310
11	1	44-50-101	Cutter Body, HW/CSG	29-30-503
12	1	44-50-102	Valve Body, HW/CSG	29-30-513
13	1	44-50-111	HOLDER	29-30-504
14	1	25326	1/4-20 x 1/4" Hex Drive Cup Point Black Oxide Finish Alloy Steel Socket Set Screw	29-30-305
15	1	40656	Check Valve Body, BQ	12-21-323
16	1	64241	1/4" x 5/8" Plain Finish Steel Slotted Spring Pin	
17	1	64252	1/4" x 1-5/8" Plain Finish Steel Slotted Spring Pin	29-30-312
18	1	64311	3/8" x 1-1/2" Plain Finish Steel Slotted Spring Pin	29-30-306
19	1	0987670	3/4" Chrome Steel Ball	12-21-321



ASSEMBLY		
DESCRIPTION	PART #	WEIGHT (LBS)
HW CASING / P W/L ROD CUTTER ASSY	44-50-100	37.211

DESCRIPTION	PART #	QTY
REPAIR KIT	44-30-200	
- ROLLER STABILIZER	44-40-112	2
- ROLLER SCREW	44-40-113	2
- TOOL HOLDER PIN	64311	1
- TOOL HOLDER PIN	64241	1
- CUTTER KNIFE	44-40-117	1
- PISTON SPRING PIN	64252	1
- SET SCREW TOOL BIT	25326	1



 Usinage X-Spec Inc. 1066, Jules Brisebois Val-d'Or, QC, Canada J9P 6X4 (819)-874-1045 www.xspec.ca	FILENAME: B7594
	DATE 2018-03-28