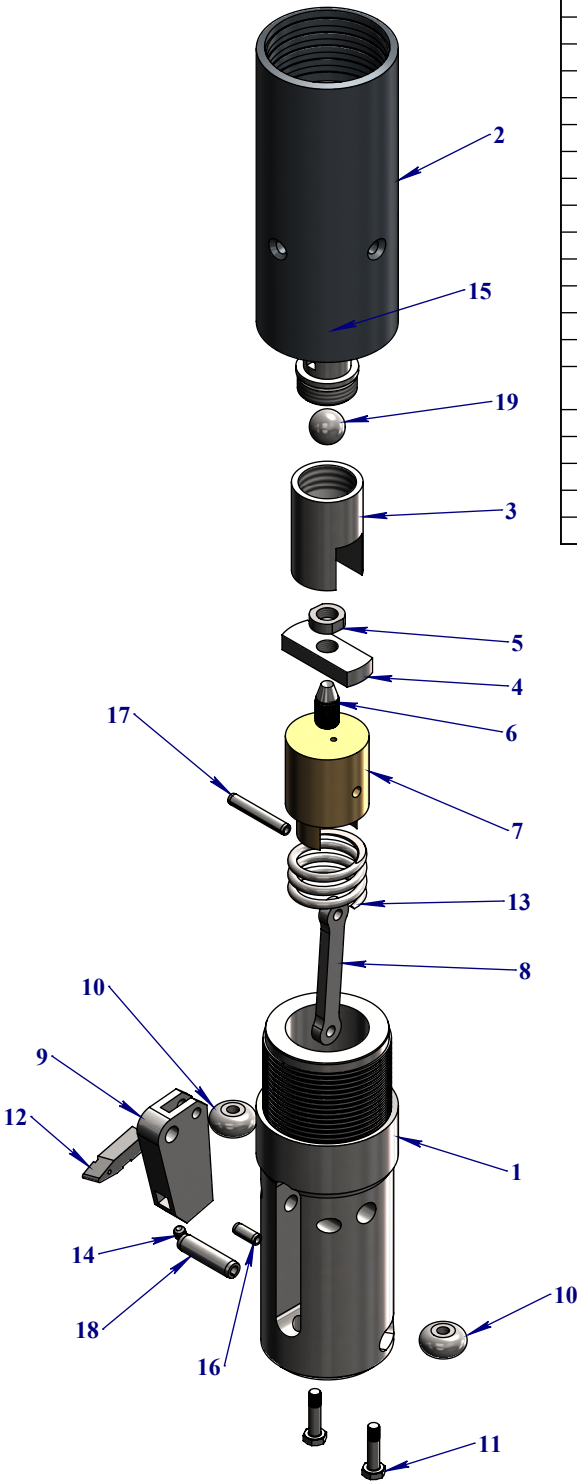


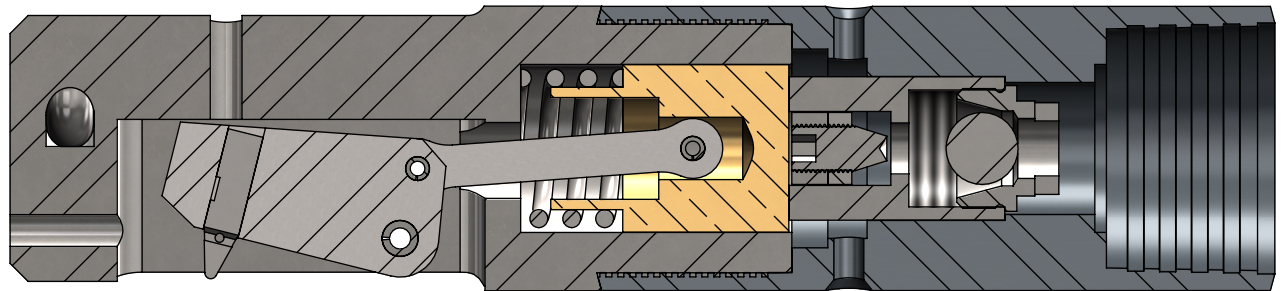
# ITEM	QTY	PART #	DESCRIPTION	REPLACES
1	1	44-40-101	Cutter Body, NW	29-30-403
2	1	44-40-102	Valve Body, NW	29-30-413
3	1	44-40-103	Valve	29-30-314
4	1	44-40-106	Stopper Base	29-30-317A
5	1	44-40-107	Stopper Lock Nut	29-30-317C
6	1	44-40-108	Stopper Screw	29-30-317B
7	1	44-40-109	Piston	29-30-311
8	1	44-40-110	Piston Rod	29-30-309
9	1	44-40-111	Tool Bit Holder	29-30-304
10	2	44-40-112	Roller Stabilizer	29-30-302
11	2	44-40-113	Roller Screw	29-30-301
12	1	44-40-117	Cutter Knife (Carbide)	29-30-307
13	1	44-40-119	Compression Spring	29-30-310
14	1	25326	1/4-20 x 1/4" Hex Drive Cup Point Black Oxide Finish Alloy Steel Socket Set Screw	29-30-305
15	1	40656	Check Valve Body, BQ	12-21-323
16	1	64241	1/4" x 5/8" Plain Finish Steel Slotted Spring Pin	
17	1	64252	1/4" x 1-5/8" Plain Finish Steel Slotted Spring Pin	29-30-312
18	1	64311	3/8" x 1-1/2" Plain Finish Steel Slotted Spring Pin	29-30-306
19	1	0987670	3/4" Chrome Steel Ball	12-21-321



#### ASSEMBLY

DESCRIPTION	PART #	WEIGHT (LBS)
NW CASING / H W/L ROD CUTTER ASSY	44-40-100	19.298

DESCRIPTION	PART #	QTY
<b>REPAIR KIT</b>	<b>44-30-200</b>	
- ROLLER STABILIZER	44-40-112	2
- ROLLER SCREW	44-40-113	2
- TOOL HOLDER PIN	64311	1
- TOOL HOLDER PIN	64241	1
- CUTTER KNIFE	44-40-117	1
- PISTON SPRING PIN	64252	1
- SET SCREW TOOL BIT	25326	1



	<b>Usinage X-Spec Inc.</b> 1066, Jules Brisebois Val-d'Or, QC, Canada J9P 6X4 (819)-874-1045 www.xspec.ca	044 - BRADLEY CASING CUTTER
		FILENAME: B1871
		DATE
		2018-03-28