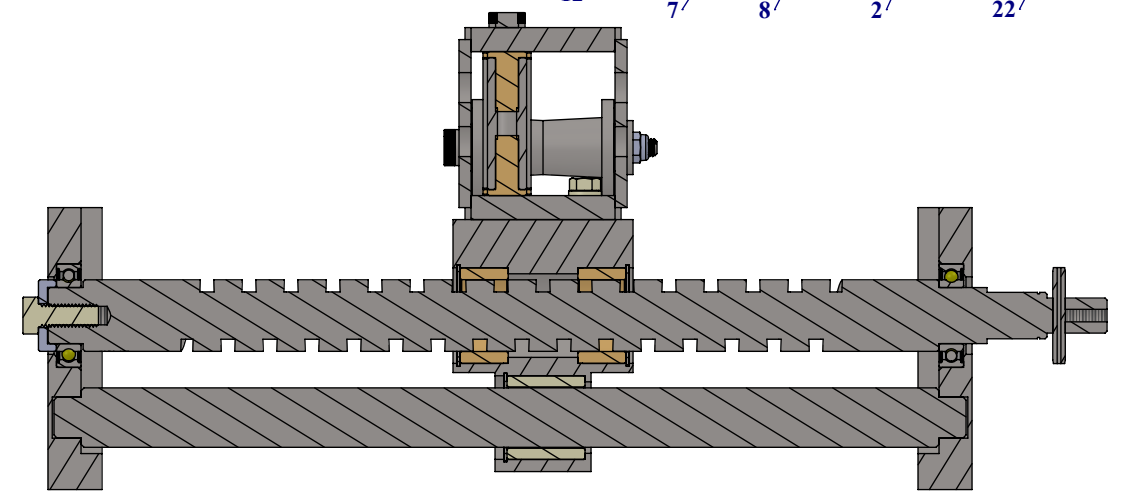
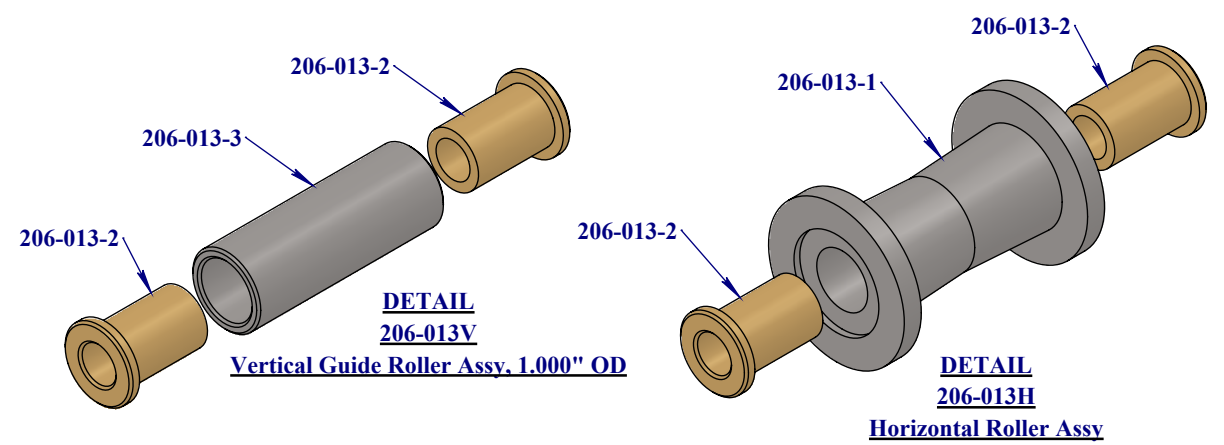
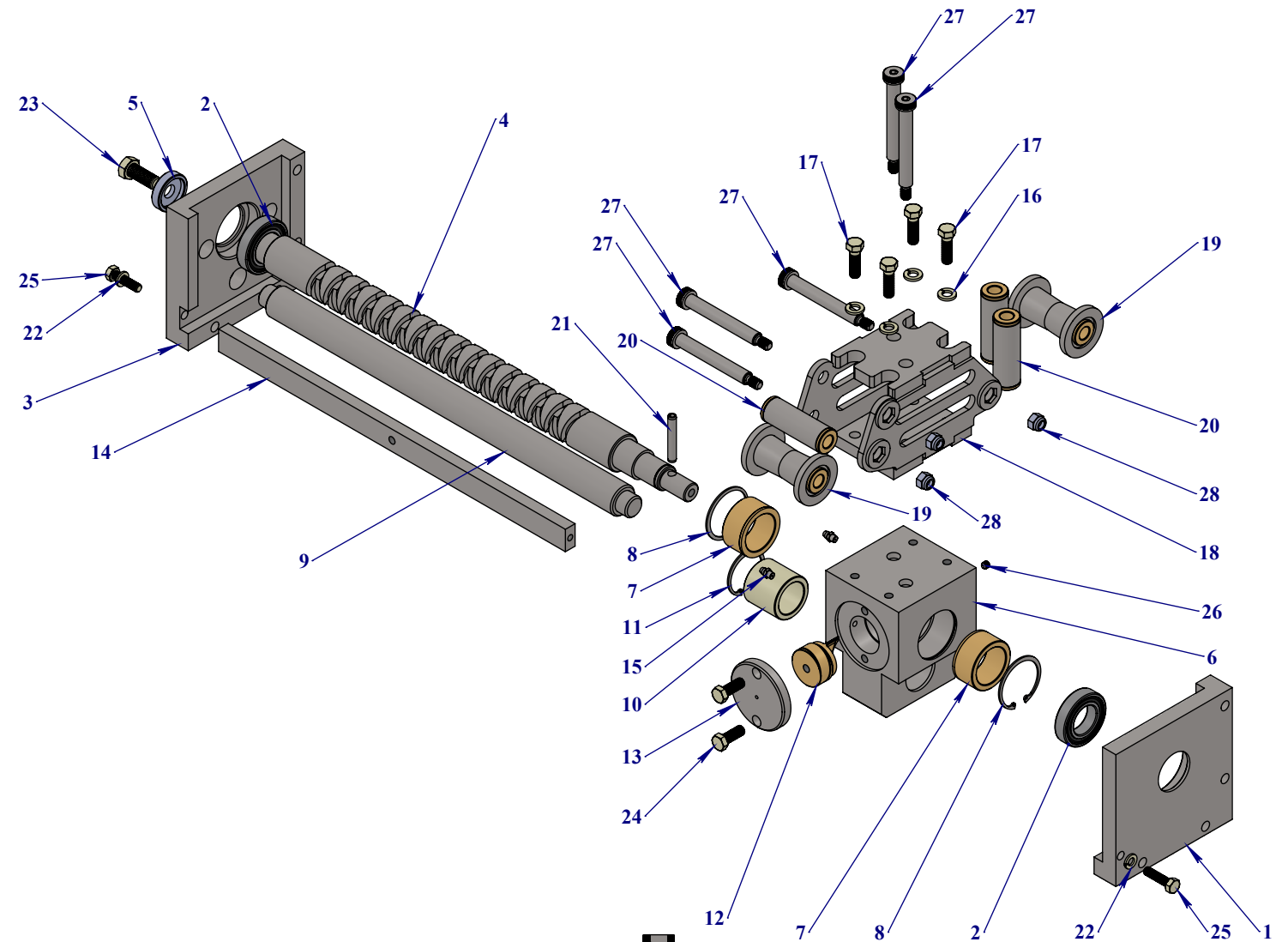



Item #	Part Number	Description	Qty	Unit Weight
1	206-001	Right Bearing Holder	1	7.00
2	15-6006-2RS	Deep Groove Ball Bearing	2	0.254
3	206-002	Left Bearing Holder	1	7.09
4	206-003	Winding Screw, XW-900 / XW-1300	1	7.97
5	206-004	Washer	1	0.116
6	206-005	Follower Block	1	12.90
7	206-006	Bushing, Bronze	2	0.436
8	045000-0200	Internal Retaining Ring, N5000-200	2	0.0137
9	206-007	Guide Shaft, Follower	1	6.42
10	206-008	Bushing Thordon, Screw Assy	1	0.091
11	045000-0175	Internal Retaining Ring, N5000-175	1	0.0120
12	206-009	Follower, Screw Assy	1	0.486
13	206-010	Follower Cap	1	0.672
14	206-011	Flat Bar, Screw Assy	1	2.484
15	58834	1/4-28 Straight Steel Zinc Self-Tapping Grease fitting	2	0.01
16	1133622	3/8 Zinc Finish Medium Split Lock Washer	4	0.006
17	15107	3/8-16 x 1-1/4" Grade 8 Yellow Zinc Finish Hex Cap Screw	4	0.0547
18	206-012	Guide Roller Support	1	5.082
19	206-013H	Horizontal Guide Roller Assy, 2.000" OD	2	0.975
20	206-013V	Vertical Guide Roller Assy, 1.000" OD	3	0.443
21	64285	5/16" x 2" Plain Finish Steel Slotted Spring Pin	1	0.0268
22	1133620	5/16 Zinc Finish Medium Split Lock Washer	2	0.004
23	15207	1/2-13 x 1-1/4" Grade 8 Yellow Zinc Finish Hex Cap Screw	1	0.1037
24	15105	3/8-16 x 1" Grade 8 Yellow Zinc Finish Hex Cap Screw	2	0.0453
25	15057	5/16-18 x 1-1/4" Grade 8 Yellow Zinc Finish Hex Cap Screw	2	0.0370
26	0141571	1/4-28 x 1/4" Hex Drive Cup Point Zinc Finish Alloy Steel Socket Set Screw	1	0.002
27	26360	1/2" Shoulder x 3-1/2" Shoulder Length x 3/8-16 Black Oxide Alloy Steel Socket Shoulder Bolt	5	0.244
28	37024	3/8-16 Grade 2 Zinc Finish NE Steel Nylon Insert Lock Nut	3	0.022

Infos Mat. Prem / Raw Mat. Info	
Internal P/N	C3399
Catalog P/N	206-019



SI NON SPÉCIFIÉ LES DIMENSIONS SONT EN POUCES ET LES TOLÉRANCES: FRACTIONS DÉCIMALES ANGLES $\pm 1/16"$.XX ± 0.05 $\pm 1\text{deg}$.XXX ± 0.005	CE DOCUMENT ET TOUTES LES INFORMATIONS QU'IL CONTIENT SONT LA PROPRIÉTÉ DE USINAGE X-SPEC INC. TOUTE REPRODUCTION EN TOTALITÉ OU PARTIELLE EST INTERDITE SANS L'AUTORISATION DE USINAGE X-SPEC INC.	PROJET: 206-100 - Hoist XW-900 DESCRIPTION: Winding Screw Assy
	DESSINÉ PAR: System Administrator Poids/Weight 56.869 lbs	2023-02-06 # DE DESSIN: C3399
 www.xspec.ca	ÉCHELLE: 1:6	